



ZANETTO

HANDMADE IN ITALY

GENERAL CATALOGUE



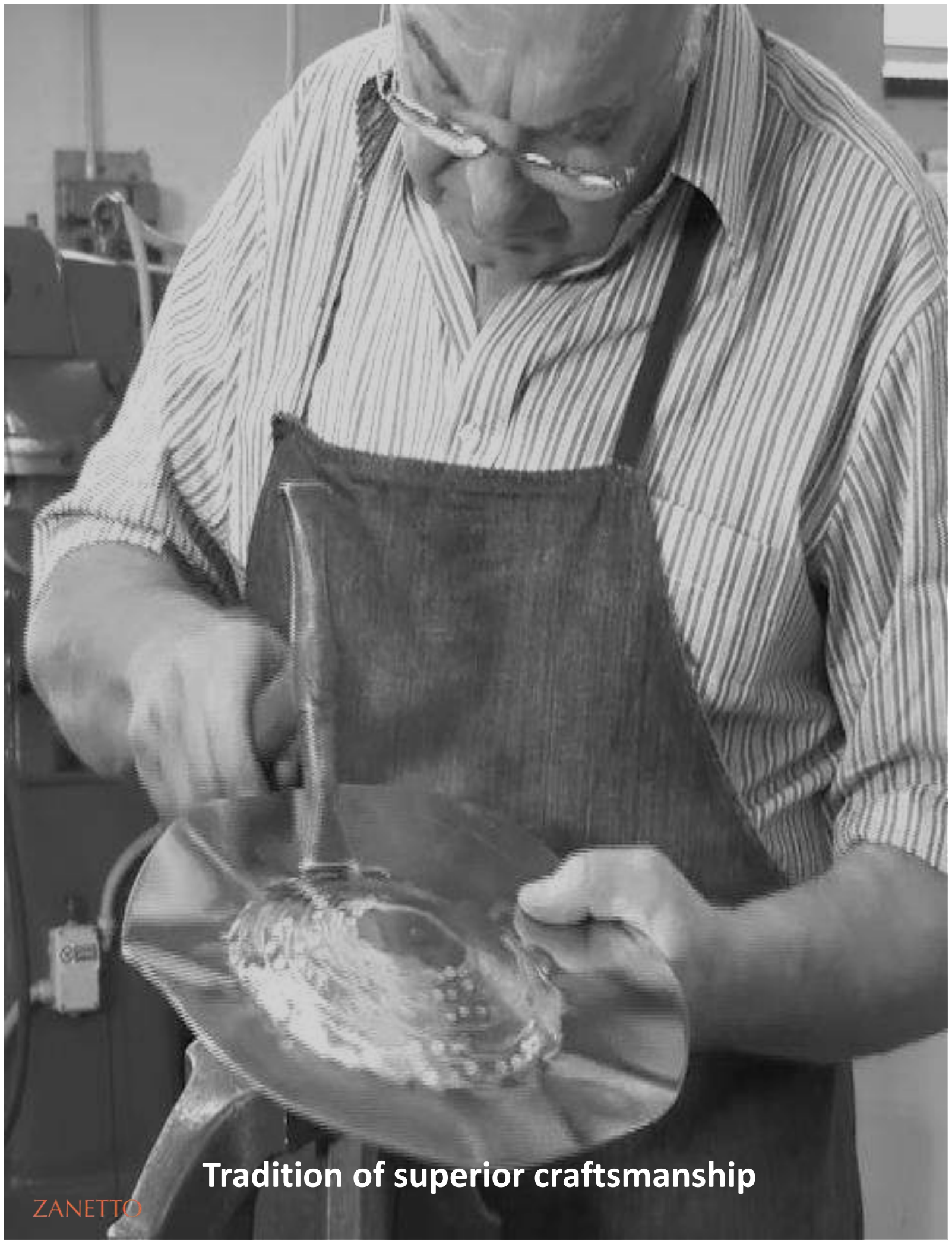
ZANETTO

HANDMADE IN ITALY



GROWERS OF BEAUTY

since 1963



Tradition of superior craftsmanship

ZANETTO

SUPERIOR HANDICRAFT CREATIONS FROM NOBLE METALS

ZANETTO IS AN ITALIAN CRAFTSMANSHIP LABORATORY, DEDICATED TO THE CREATION OF SILVER AND PRECIOUS METALS ART OBJECTS FOR ROOM AND TABLE DECORATION.

ZANETTO È UN LABORATORIO ITALIANO DI ALTO ARTIGIANATO, DEDITO ALLA CREAZIONE DI OGGETTI ARTISTICI IN ARGENTO E LEGHE NOBILI PER LA DECORAZIONE DEGLI AMBIENTI E PER LA TAVOLA.

INDEX

Zanetto

Mission

Quality

Design

Pattern And Finishing

Products

ZANETTO

workshop

Founded in **1963**, the company boasts more than fifty years of experience and makes use of the most talented Italian workers in the silver sector to produce innovative objects featuring a sophisticated design.

By skilfully combining the most **traditional work methods** with the most **original artisanal endeavours**, the company creates alluring, high-quality works that can decorate any setting and satisfy those who love to surround themselves with priceless and timeless values, like **beauty** and **harmony**.

Like every company, **Zanetto** is a reflection of the people who created it and who experience it, reinvent it and help it grow every day.

The company's history is therefore entwined with that of its founder, **Bernardo Zanetto**, and his son, **Enrico**, who is currently committed to steering the company towards international objectives and developing its international aspects. Today, the workshop has about 15 in-house employees and ten external collaborators, all of whom complete a training and learning period of more than five years.

The Zanetto production philosophy involves maintaining the artisanal character of its products, convinced that hand production provides a unique and absolute guarantee to achieving exceptional quality and original workmanship. Traditional techniques and ancient secrets are maintained and reinvented to create contemporary objects that strive for **simplicity** and **balance**.

*Nato nel **1963**, vanta oltre cinquant'anni di esperienza e si avvale delle più dotate maestranze italiane del settore argentiero per dar vita a oggetti innovativi e di ricercato design. Dalla sapiente unione delle più **tradizionali tecniche lavorative** con le più **originali sperimentazioni artigianali**, nascono opere di alto tenore qualitativo ed estetico, per impreziosire ogni contesto e appagare chi ama circondarsi di valori inestimabili e senza tempo, come **Bellezza** ed **Equilibrio**.*

*Come ogni azienda, **Zanetto** è lo specchio delle persone che l'hanno creata e che ogni giorno la vivono, la reinventano e la fanno crescere.*

*La sua storia, dunque, è quella del suo fondatore, **Bernardo Zanetto** e di suo figlio **Enrico**, che oggi la dirige con dedizione verso obiettivi e dimensioni sempre più internazionali. Oggi il laboratorio impiega al proprio interno circa quindici collaboratori, affiancati da una decina all'esterno, tutti sottoposti a periodi di formazione e apprendimento ben oltre i cinque anni.*

*Zanetto ha scelto come filosofia produttiva il coerente mantenimento della caratterizzazione artigianale, convinto che le lavorazioni manuali siano unica e assoluta garanzia per il raggiungimento di elevata qualità e originalità esecutiva. Le tecniche e i segreti antichi vengono conservati e rinnovati per dar vita a oggetti contemporanei, perseguendo i valori della **semplicità** e dell'**equilibrio**.*

MISSION

OUR MISSION IS INTERWOVEN WITH SOCIAL RESPONSIBILITY AND SOLIDIFIES IN WHAT WE CALL AN

ETHIC OF RESPECT.

First and foremost, this ethic is based on respect for the Earth and its not-unlimited resources: Our craftsmanship is based on “responsible” luxury, arising from a commitment to create and offer “beautiful works with significant intrinsic and aesthetic value”, without negatively impacting the surrounding environment or the survival of the planet. Our aim is to enrich and enhance metals by blending the best that man can express: craftsmanship and creativity. By laying down production logic along these lines, via a refusal to manufacture en masse and exalting unique objects crafted by hand, we have achieved a broader reaching and deeper concept of quality; a global quality, the aim of all at our forge.

The criterion that guides us along this path is the constant research for simplicity: this evokes ideas of pure, eternal harmony and well-being, to both liberate and satisfy the spirit. This effort to interpret simplicity requires a special commitment, as simple contours and pure form need to achieve a perfect balance. Thus BALANCE is our measure, reflected, restored and transfigured by the LIGHT of silver. The very light I like to think of as a gift within each of the articles produced by our workshop.



LA NOSTRA MISSION È INTESSUTA NELLA RESPONSABILITÀ SOCIALE E SI REALIZZA IN QUELLA CHE NOI DEFINIAMO

ETICA DEL RISPETTO.

Questa etica si sostanzia, anzitutto, nel rispetto per la Terra e per le sue risorse non illimitate: Il nostro è un artigianato di lusso “consapevole”, che nasce dall’impegno nel creare e proporre “opere di alto valore intrinseco ed estetico” senza incidere negativamente sull’equilibrio dell’ambiente che ci circonda e sulla sopravvivenza del pianeta Il nostro intento è quello di arricchire ed elevare la materia metallo attraverso la congiunzione con quanto di meglio può esprimere l’uomo: la maestria e la creatività. Conformare la logica produttiva a queste idee, passando attraverso il rifiuto delle produzioni di serie, esaltando l’oggetto unico, in quanto lavorato a mano, coincide con un concetto di qualità ampio e profondo, una qualità globale, che è obiettivo condiviso da tutti nella nostra fucina.

Cercare di interpretare la semplicità esige un impegno particolare, in quanto una linea semplice, una forma pura, deve possedere un equilibrio perfetto. L’EQUILIBRIO, dunque, è la nostra misura: specchiato, rimandato e trasfigurato dalla LUCE dell’argento, luce che mi piace pensare come dono racchiuso in ogni oggetto che esce dal nostro laboratorio.

At Zanetto, hand production is viewed as an absolute guarantee of quality and original workmanship. Traditional techniques and ancient secrets are thereby maintained and reinvented to create contemporary objects that strive for simplicity and balance. Owning a Zanetto product therefore means enjoying a high-quality product. Thanks to our highly specialized and skilled master artisans, and continuous quality controls, we are able to produce objects made with the finest materials having uniform shapes, well-finished edges, perfect soldering without any residues, precise hammering and chiselling, completely smooth surfaces, and uniform, thick silver plating. The value of an object's design also contributes to its quality – each of our creations is the result of long study and continuous research regarding decorative surface finishes, technical innovation and the aesthetic value of the shapes. Production entirely by hand and an original style make every Zanetto product a precious and unique creation.

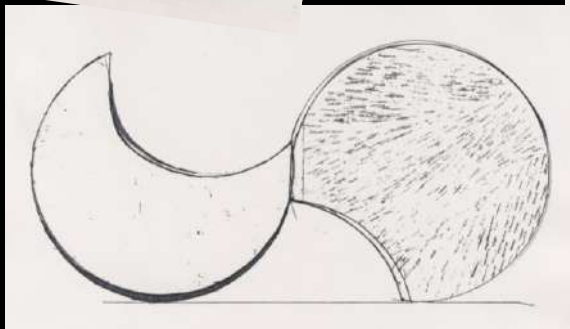
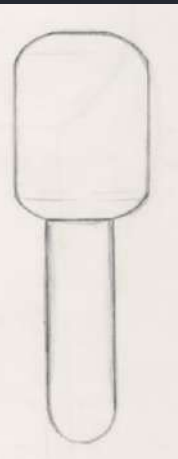
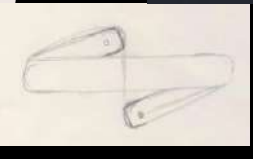
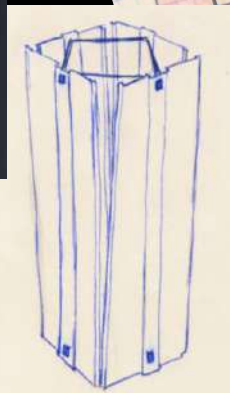
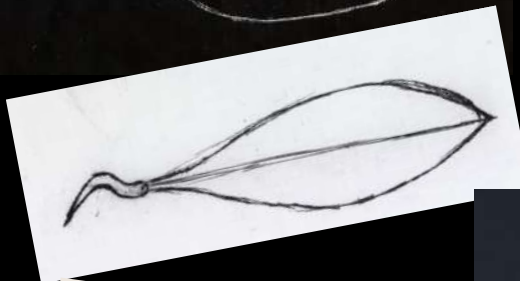
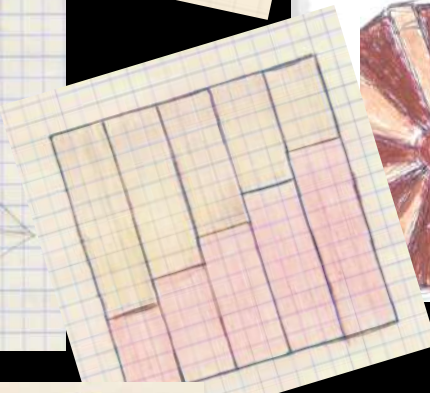
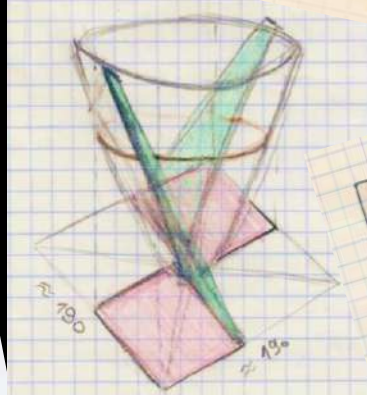
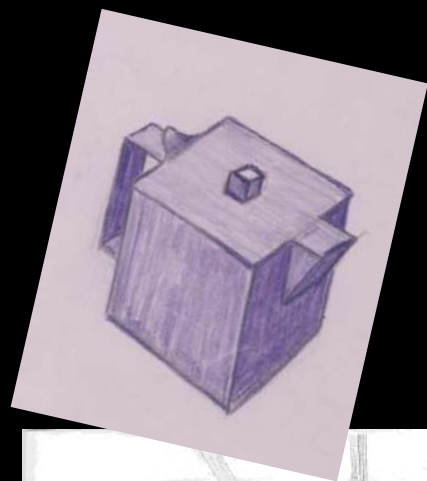
La lavorazione manuale è per noi garanzia assoluta di qualità e originalità esecutiva. Le tecniche e i segreti antichi vengono così conservati e rinnovati per dar vita a oggetti contemporanei, perseguendo i valori della semplicità e dell'equilibrio. Possedere un manufatto Zanetto significa, quindi, godere di un prodotto di alta qualità. L'altissima specializzazione e capacità dei nostri maestri artigiani, assieme al meticoloso e costante controllo qualità, consentono l'ottenimento di oggetti con materiali di prima scelta, forme sbazzate in modo regolare, bordure ben rifinite, saldature a regola d'arte con eliminazione di ogni residuo, martellature e cesellature precise, superfici levigate in ogni punto, uniformi ed elevati depositi di argento. A determinare la qualità di un oggetto concorre anche il valore progettuale del suo disegno: ogni nostra creazione è il frutto di lunghi studi e costante ricerca sulle valenze estetiche delle forme, sulla finitura decorativa delle superfici, sull'innovazione delle tecniche. Lavorazioni totalmente manuali e originalità di segno fanno di ogni oggetto Zanetto una creazione preziosa e unica



DESIGN

THE EXCEPTIONAL DESIGN OF ZANETTO'S CREATIONS CONTRIBUTES TO THEIR QUALITY AND EXQUISITENESS

Each work is the result of long study and continuous research regarding decorative surface finishes, technical innovation and the aesthetic value of the shapes. The design of each creation is the result of the creative inspiration of Bernardo and Enrico Zanetto. More specifically, since 2000, each creation has featured the style of Enrico Zanetto, who is responsible for the most revolutionary and modern experiments with the concept of silver.



A DETERMINARE LA PREZIOSITÀ
E LA QUALITÀ DELLE CREAZIONI
ZANETTO CONCORRE ANCHE IL
VALORE PROGETTUALE DEL
DISEGNO

Ogni opera è il frutto di lunghi studi e costante ricerca sulle valenze estetiche delle forme, sulla finitura decorativa delle superfici, sull'innovazione delle tecniche. Il design di ogni creazione è frutto dell'estro creativo di Bernardo e di Enrico Zanetto. In particolare, a partire dal 2000, ogni creazione porta il tratto di Enrico, autore delle sperimentazioni più rivoluzionarie e contemporanee sul concetto di argento.



GROWERS OF BEAUTY

"I remember that almost every evening, at dinner, my father placed the prototype that he was working on at the centre of the table so that he could calmly examine its lines and volumes, looking for defects and ways to improve its overall harmony and balance. As a child, I looked at those objects, those fledgling creations, as though they were alive. I listened to their language speak of pride or gentleness and perceived their spirit. Since then, I always wanted to create such objects. And give them a spirit, so that they could express their own personality and language, speaking to the intimate essence, the spirit, of people. I learned that, for an object to have a spirit, it cannot be subjected to the slavery of serial production, to the alienation of repetition and the calamity of tedium, rather it must be a single and unique example, an expression of individuality. This result can only be achieved through production by hand, where its "defects" and "mistakes" make each object original rather than a copy, stimulating the creativity of the worker, freeing the object from pure functionality and exalting an expressiveness that awakens emotional responses, including by stimulating the senses with light, colour variations and the tactile properties of the surface. Instilled with this life, the original becomes a messenger, continually attesting to the love of which people are capable and the divine magnificence of creating. This is what our original works express, this is the awareness that they seek to give to their enjoyer. I continue to work, striving for this alchemy..."

Enrico Zanetto

COLTIVATORI DI BELLEZZA

«Ricordo che quasi tutte le sere, a cena, mio padre posava al centro della tavola il prototipo a cui stava lavorando, per poterne riesaminare, con calma, le linee e i volumi, cercando i difetti e migliorare l'armonia e l'equilibrio complessivo. Io, piccino, guardavo a quegli oggetti, quelle creature nascenti, come se fossero vivi, ascoltavo la loro lingua parlare di fierezza o di dolcezza, ne percepivo l'anima. Ecco, da allora, ho sempre voluto dare vita agli oggetti. E dargli un'anima, che potesse esprimere una propria personalità e un proprio linguaggio, dialogando così con l'intima essenza, l'anima, delle persone. Ho imparato che, per avere un'anima, l'oggetto non può essere assoggettato alla schiavitù della serialità, all'estraniamento della ripetizione e alla calamità della noia, bensì deve essere un esemplare unico e irripetibile, espressione di individualità. Tale risultato si ottiene solo attraverso la manualità, i suoi 'apparenti' difetti ed errori, facendo di ogni oggetto non una 'copia' ma un originale, sollecitando la creatività del lavoratore, liberando l'oggetto dalla pura funzionalità ed esaltando un'espressività che susciti risposte emotive, anche attraverso la sollecitazione dei sensi: con la luce, con le variazioni cromatiche o con le proprietà tattili delle superfici. Instillato di questa vita, l'originale, diviene messaggero, testimone costante dell'amore di cui è capace l'uomo e della divina magnificenza del creato. Di questo vogliono parlare i nostri originali, è questa la consapevolezza che vogliono portare in dono al loro fruitore. Io continuo ad operare, a cercare questa alchimia...»

Enrico Zanetto



PATTERN AND FINISHING

The final aspect of our noble metals expresses the variety and eclecticism of our skills. From the pure mirroring of shiny silver, to the charm of its lunar whiteness. From the fire aroused by copper, to the warmth of the bronzes, and the preciousness of gold and platinum.

And all the shades between polished and matt, as well as the different hues of burnishing.

Then chromium and nickel treatments obtaining various colorations and vintage effects. Finally the brightest and most vivid colors generated by our glazes.

L'aspetto finale dei nostri metalli nobili esprime la varietà e l'eclettismo delle nostre abilità. Dalla pura specularità dell'argento lucido, alla fascinazione del suo biancore lunare. Dal fuoco del rame al calore dei bronzi, alla preziosità dell'oro e del platino.

E tutte le declinazioni tra il lucido e il satinato, così come le diverse gradazioni di brunitura. E trattamenti al cromo e nichel ottenendo varie colorazioni ed effetti vintage. Infine i colori più brillanti e sgargianti generati dalle nostre smaltature.



HAMMERING

Modernity enhances all that is machine made and despises manual work. The hammering technique is considered to be a leftover from the past and for this reason, mastery of this technique today is far from widespread. The bright mirror finish is only one of the metal's aspects, which in effect has an extremely rich and communicative language. Our newness lay not only in the simple reinstatement of hammering but in the elaboration of new versions, marks and textures, creating unprecedented movement on surfaces that I could find no trace of in previous history.

It was radical first and foremost, because it fearlessly manifested the manual skill of its production process, in flagrant opposition to the standardisation canons of industry and proudly declared its artisan origins, coherently integrating this characteristic in the design and models of the volumes.

La modernità esalta il fatto a macchina e disprezza il lavoro manuale. La tecnica della martellatura è considerata un residuo del passato: per questo, oggi, la padronanza di questa lavorazione non è affatto comune. La lucente specularità è solo uno dei modi d'essere del metallo, che dispone in realtà di un tessuto estremamente ricco e comunicativo. La novità da noi apportata riguarda non solo semplicemente la riabilitazione della martellatura ma l'elaborazione di nuove tipologie, segni grafici e trame, che danno vita a texture delle superfici assolutamente inedite, di cui non abbiamo riscontrato tracce nella storia precedente.

E' radicale anzitutto perché, senza paura, rende manifesta la manualità della lavorazione, in aperta opposizione ai canoni della standardizzazione propri dell'industria e dichiara orgogliosamente la sua origine artigianale, integrando coerentemente questa caratteristica al progetto e al modellato dei volumi.

ZANETTO TEXTURES

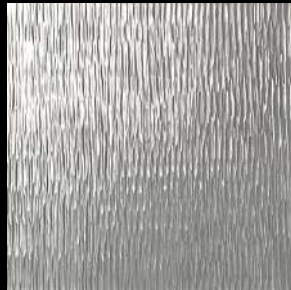
"I like to use the term ancestral alphabet, a dialogue between metal and man, but these textures speak directly to man about man, bringing him back into the centre, with his creativity and his skill. Even the most profane can understand this message and be rewarded in their individuality, because they enjoy a unique unrepeatable object."

"Mi piace parlare di alfabeto ancestrale, un dialogo tra metallo e uomo, ma quelle trame parlano direttamente all'uomo dell'uomo, riportandolo al centro, con la sua creatività e la sua maestria. Anche il fruitore più profano comprende questo messaggio ed è premiato nella sua individualità, perché gode di un oggetto unico ed irripetibile."

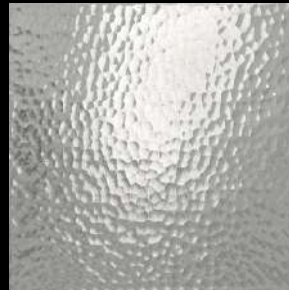
Enrico Zanetto



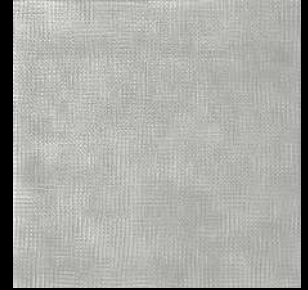
acqua



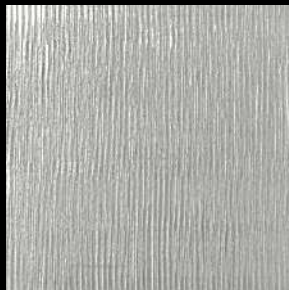
aghi



buccia



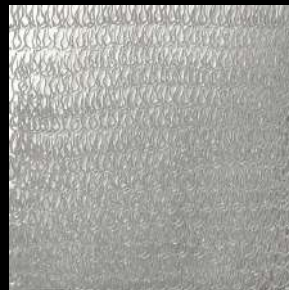
canapa



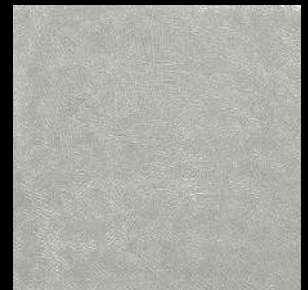
corteccia



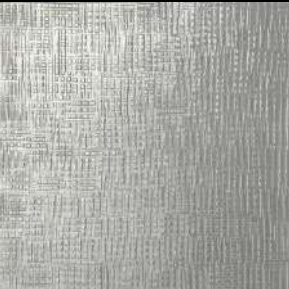
cosmica



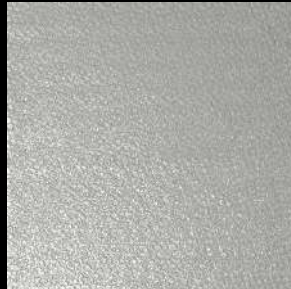
fili



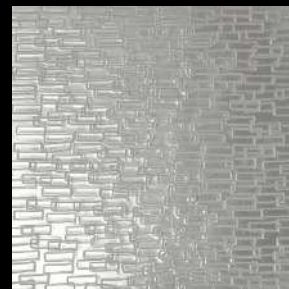
graffi



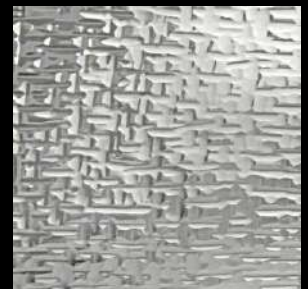
intreccio



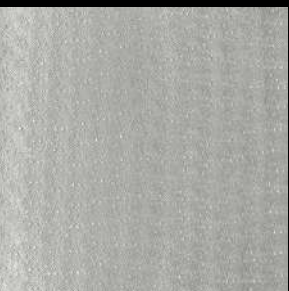
palline



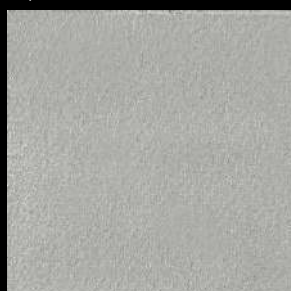
rettangoli



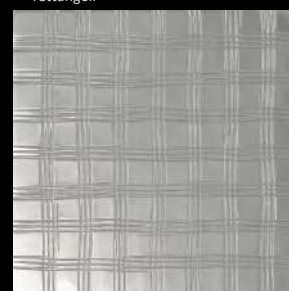
rosanero



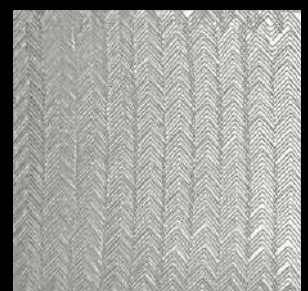
rugiada



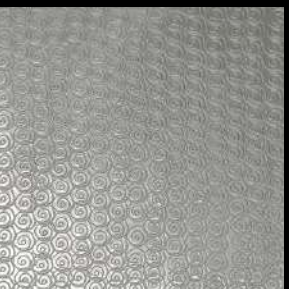
sahara



scozzese



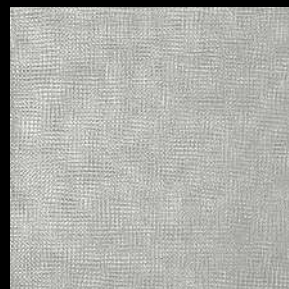
spina di pesce



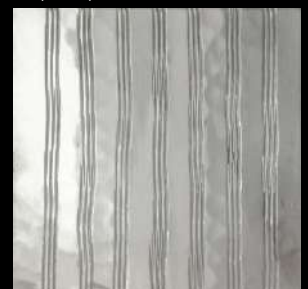
spirali



tartaruga



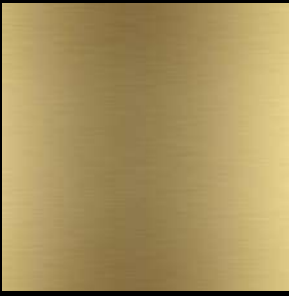
velvet



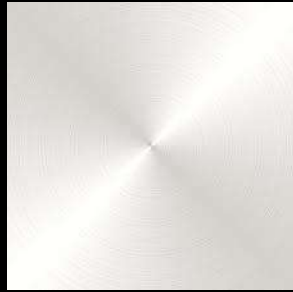
vie

ZANETTO MATERIALS

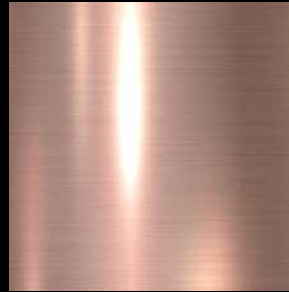
BASE METALS



brass



sterling silver



copper



white bronze

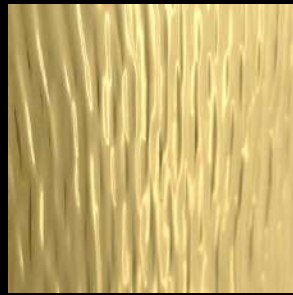
FINISHINGS

The final appearance of our noble metals expresses the variety and eclecticism of our skills.

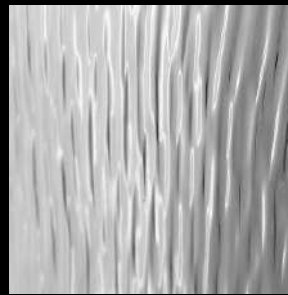
From polished silver's clean, mirror-like surface, to the appeal of its lunar whiteness. From the fiery colour of copper, to the warmth of bronze and the exquisiteness of gold and rhodium. And all the possibilities ranging from polished to satin, or the many tones of burnished finishes...



silver plated



gold plated



platinum plated



plus plated



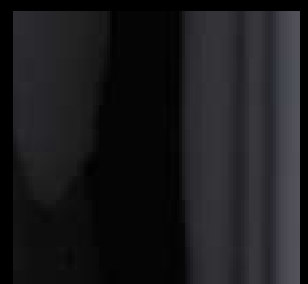
burnished copper



burnished bronze



burnished brass



titanium plated



gold PVD



Red PVD



color enamels



PRODUCTS

CATEGORIES

AT TABLE


HOME DECOR

JEWELS & GIFTS

COLLECTIBLE DESIGN

AT TABLE

The "Zanetto table" offers functional elements with a sophisticated style – so many ways to make the art of drinking and serving special. Original products to savour social gatherings and the pleasures of the table in their most elegant and exquisite form.



Party
Drinking
Thermic pitchers
Tea & coffee
Breakfast
Baskets & fruit bowls
Salad bowls
To flavor
Serving dishes
Thermal dishes
Trenchers & cheese dishes
Cakes and sweets
Your tableplace
Your flatware
Serving cutlery
Table accessories
The Classics

Party

NEW YORK

collection

Bronze, brass and silver:

the NEW YORK Collection is finally ready to color the most beautiful tables with Zanetto's most representative materials.

The real protagonists of this collection are the lines and the workmanship.

Zanetto craftsmanship gives the solidity of the precious metals the maximum sinuosity in the lines, making them warm and discreet, ready to enhance gourmet dishes and refined environments.



NEW YORK silver

texture Canapa, matt silver plated



- ▲ bread basket - dm 18 h 5 - **3075A**
 cutlery rest - 10 x 2,5 - **3077A**

- ▲ small tray - 29 x 10,5 - **3074A**
 small bowl - dm 8 h 4 - **3071A**
 medium bowl - dm 8 h 7 - **3072A**
 tall bowl - dm 8 h 10 - **3073A**
Set 4 pieces - 3070A
 breadstick holder - dm 6 h 14 - **3076A**



NEW YORK brass

Smooth, matt burnished brass



✓ bread basket - dm 18 h 5 - **3075D**
 cutlery rest - 10 x 2,5 - **3077D**

✓ small tray - 29 x 10,5 - **3074D**
 small bowl - dm 8 h 4 - **3071D**
 medium bowl - dm 8 h 7 - **3072D**
 tall bowl - dm 8 h 10 - **3073D**
Set 4 pieces - 3070D
 breadstick holder - dm 6 h 14 - **3076D**



NEW YORK noir

Texture TARTARUGA, matt bronze noir



- ^ small tray - 29 x 10,5 - **3074F**
- small bowl - dm 8 h 4 - **3071F**
- medium bowl - dm 8 h 7 - **3072F**
- tall bowl - dm 8 h 10 - **3073F**
- Set 4 pieces - 3070F**
- breadstick holder - dm 6 h 14 - **3076F**

- ^ bread basket - dm 18 h 5 - **3075F**
- cutlery rest - 10 x 2,5 - **3077F**



- > Set **TRIS APE**
 1 plate & 3 bowls **SALIRO'**
 texture AGHI - shiny
 dm 20 h 6
9110 silver plated
9110H gold PVD



^ **9112** bowl **SEMINO** – silver plated
 texture Canapa - 9 x 7



^ **9113** bowl **SALIRO'** – silver plated
 texture Aghi - dm 8



^ **9114** bowl **TOKIO** – silver plated
 texture Puntini - dm 8



^ bowl **TRIO** – dm 11 h 4
 texture Cortecchia
9121 silver plated



^ bowl **TAGLIO** – dm 11 h 5
 texture Cortecchia
9122 silver plated



^ bowl **BOMBAL** – dm 11 h 5
 texture Cortecchia
9123 silver plated



< ^ **7815** Set cocktail 4 pieces **VELVET 1**
texture Canapa - light gold - 29x10 h 10

> Cocktail bowl **VELVET 1**
texture Canapa - light gold
7812 small dm 8 h 4
7813 medium dm 8 h 7
7814 big dm 8 h 10



v **7821** Small rectangular tray **VELVET 1**
texture Canapa, matt light gold - 29x10 h 3



> **DOUBLE EASTER**
texture Corteccia
25 x 10 h 9
9627 silver plated
9627G gold plated



< bowl **EASTER**
texture Corteccia
10 x 13 h 9
9626 silver plated
9626B brass
19626 sterling silver - gr 180

The reflections of gold and silver propagate in space and create illusory stars of light on the walls and in the eyes of the observer. This is the undoubted elegance of this special object with an enveloping design and a singular shell shape.



< Pleasures offer **INTRECCI**
Texture SPIRALI
17 x 10 h 5
9377 silver plated
9377G gold plated

> Pleasures offer **INTRECCI 2**
Texture AGHI A RAGGIERA
30 x 16 h 6
9379 Silver plated



< **CANOA BABY**
Texture AGHI
38 x 6 h 3
9185 silver plated

> pleasures offer **KIWI**
texture Aghi a raggiera
dm 21 h 13
9380 silver plated
9380R platinum plated





^ **2117** horse d'oeuvre set BINARIO
30 x 12 - plus plated



^ **2118** horse d'oeuvre set BINARIO
40 x 17 - plus plated



^ **2119** horse d'oeuvre set BINARIO
33 x 23 - plus plated



AT TABLE



ZANETTO



^ **2173** food container BINARIO
52 x 17 - plus plated



^ **2178** hors d'oeuvre dish **BINARIO**
dm 28 (36) – plus plated



^ **0178** hors d'oeuvre dish **VENEZIA**
dm 32 - plus plated



^ **9271** hors d'oeuvre **TORONTO**
27 x 11 - plus plated



^ **2151** serving set **MARGHERITA**
dm 60 (47) h 9 - plus plated



^ **2106** glass server **BINARIO**
18 x 7 h 22 - plus plated



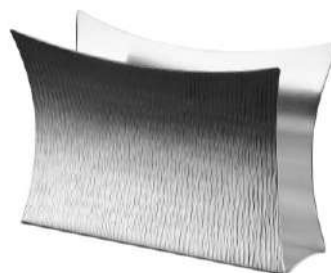
^ **2109** napkins server **BINARIO**
20 x 20 h 20 - plus plated



^ **2107** cutlery server **BINARIO**
20 x 11 h 15 - plus plated



^ **2108** plates server **BINARIO**
dm 24 h 13 - plus plated



^ **9176** napkins server/card hold **PASSIONI** -
15x6 h10 - plus plated



^ 0151 cold drinks pitcher **ZARA**
h 26 dm 16 (lt 2,0) - plus plated



^ 0152 cold drinks pitcher **COIMBRA**
h 20 dm 20 (lt 2,5) - plus plated



^ 0507 cold drinks pitcher **ANGIE**
h 26 dm 16 (lt 2,0) - silver plated



^ 0506 cold drinks pitcher **MOON**
h 20 dm 20 (lt 2,5) - silver plated



^ 0069 crystal jug **ITALIA**
h 27 dm 10 (lt 0,85) - plus plated



^ **9504** cocktail shaker **VIE**
h 23 dm 8 (lt 0,75) – silver plated



^ cocktail shaker **NEWLIFE** – h 23
9354 Silver pl. - **9354G** gold pl.



^ **0154** cocktail shaker **ITALIA**
h 22 dm 8 (lt 0,75) - plus plated



^ **9254** cocktail shaker **CORTECCIA**
h 23 dm 8 (lt 0,75) – gold plated



^ **9261** mixer **LECCALECCA**
length 29 – gold plated



^ **9353** measuring cup **COCKTAIL**
Design Enrico Z - dm 4 h 8 - 2/4 cl
texture AGHI - platinum plated



^ **9521** bar strainer **VIE**
length 21 - silver plated



^ **9522** bar muddler **VIE**
length 21 - silver plated

ADD A TOUCH OF SOFISTICATION TO YOUR PARTIES
WITH THE **VIE SET**



▲ **9530** Cocktail & bar set **VIE**
Texture VIE
Silver plated

Set is composed of 7 pieces:

- 9504** cocktail shaker
- 9505** thermic ice bucket with tongs
- 9510** oval tray
- 9513** pitcher
- 9518** champagne bucket
- 9534** oval bowl

Drinking



^ pitcher **ERMES**
texture Aghi – shiny - h 38 10 x 18
9163 silver plated



^ pitcher **LUCE**
texture Aghi – polished - h 22 dm 9
9362 silver plated



^ pitcher **VIE**
texture VIE - polished - h 27 15 x 8
9513 silver plated



^ pitcher **MAIA**
texture Aghi – polished - h 18 dm 18
9164 silver plated



- < pitchers **ANNA & MARCO**
smooth & polished
ANNA - h 16 dm 12 –
0504 silver plated – **1504** sterling silver – gr 690
MARCO - h 24 dm 12 –
0502 silver plated – **1502** sterling silver - gr 1020



- ^ drinking set for two **PINK VELVET**
texture CANAPA
rose gold plated
9830G complete set 4 pieces
9885G oval tray 53x34
9863G pitcher h 32 dm 8
9817G tumbler dm 9 h 8





^ pitcher **VELVET 1**
texture Canapa - h 32 dm 8 (12)
7863 - light gold



^ pitcher **VELVET**
texture Canapa – satin - h 32 dm 8 (12)
9863 silver plated - **9863G** rose gold plated



^ pitcher **GAIA**
smooth & polished - h 24 8 x 8
9564 silver plated



^ mixer **GAIA**
smooth & polished - length 33
9561 silver plated



^ pitcher with tumbler/lid **AQUA**
texture Aghi - h 27 dm 12
9662 platinum plated, gilded inside, crystal jug



^ tumbler **CAPRI**
texture Acqua
cold enamel & silver plated
9417 dm 9 h 10

Porto cup **CAPRI**
texture Acqua
cold enamel & silver plated
9416-2 dm 6,5 h 7

Colors: orange blue yellow red turquoise green black white



^ shot glass **ISHRAM**
texture Aghi – gilded inside - dm 5 h 5
9316 silver pl. – **9316R** platinum pl.
19316 sterling silver – gr 45



^ baby / porto cup **ISHRAM**
texture Aghi – gilded inside - dm 6,5 h 7
9316-2 silver p – **9316R-2** platin. pl.
19316-2 sterling silver – gr 120



^ tumbler **ISHRAM**
texture Aghi – gilded inside - dm 9 h 10
9317 silver pl. – **9317R** platinum pl. **19317**
sterling silver - gr 205



^ **7847** tumbler **VELVET 1**
dm 8 h 9 - texture Canapa
gold plated



^ tumbler **AFRICA**
texture Canapa – dm 8 h 9
9827 silver plated



^ tumbler **UNO**
texture Intrecci – dm 8 h 9
9217 silver plated, gilded inside



^ tumbler **VELVET**
texture Velvet – dm 9 h 8
9817 silver pl. – **9817G** rosegold pl.



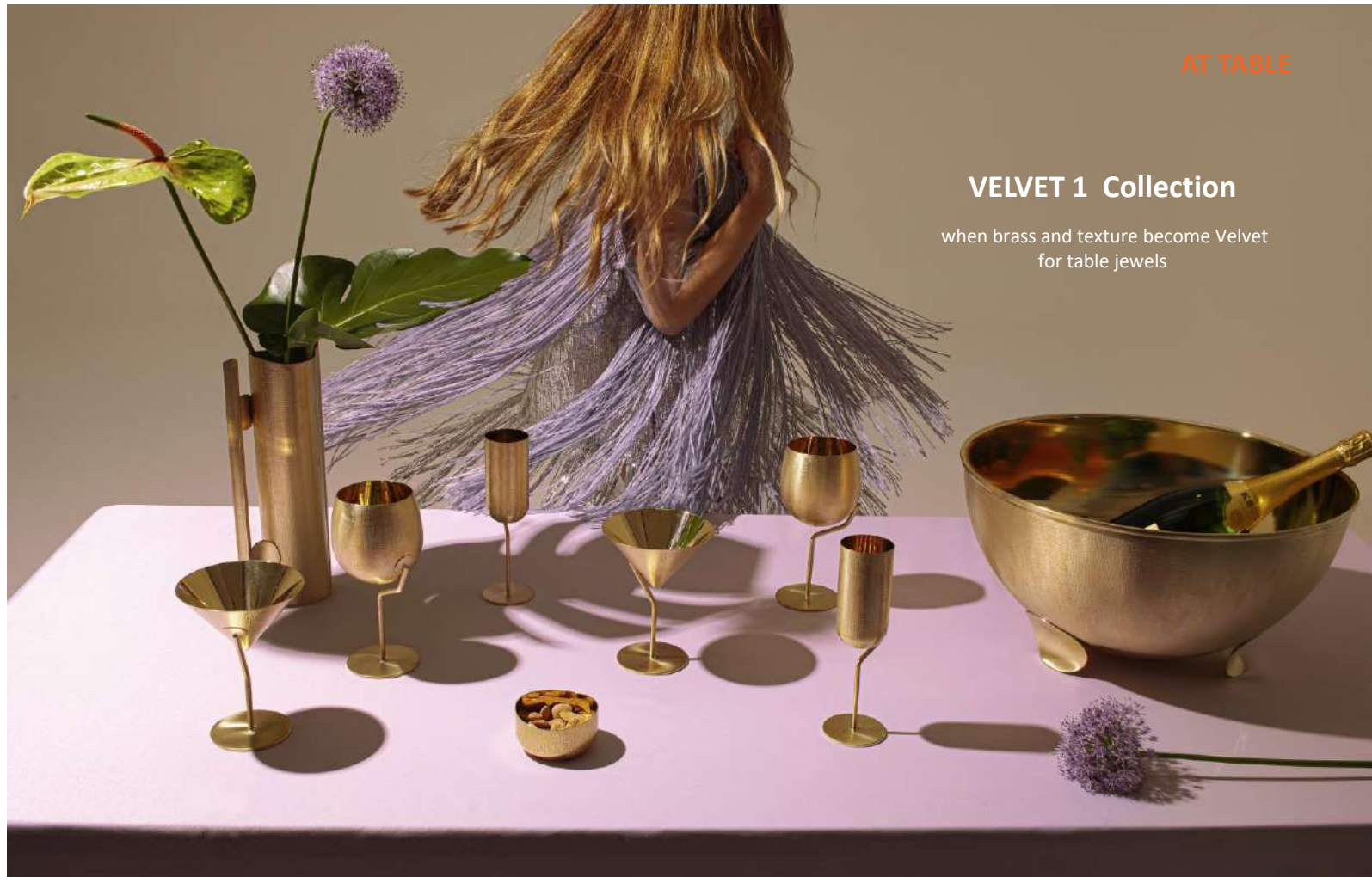
^ tumbler **ARQO**
texture Spirali – dm 8 h 9
9247 Platinum plated, gilded inside



^ tumbler **VIE**
texture Vie - dm 8 h 11
9517 silver plated

VELVET 1 Collection

when brass and texture become Velvet
for table jewels



^ 7842 flute VELVET 1 - h 21 dm 6
texture Canapa - gold plated



^ 7843 wine cup VELVET 1
h 20 dm 10
texture Canapa - gold plated



^ 7845 martini cup VELVET 1
dm 12 h 16
texture Canapa - brass, gold plated

> flute **DRI**
 texture Aghi - h 21 dm 6 - gilded inside
 9364 silver plated - 9364R platinum plated



^ champagne cup **WAVE**
 smooth & polished - h 13 dm 11
 0265 silver plated, gilded inside



^ flute **CASCAMONDO**
 smooth & polished - h 18 dm 8
 9162 silver plated - 9162R platinum plated



^ liquor set **SCACCIAPENSIERI**

8 shot glasses in 8 different textures (gilded inside) – h 5 dm 6
with smooth tray – 23 x 12

9615 silver plated - **9615R** platinum plated

19615 sterling silver - gr. 600



^ **9229** liquor set **EYE**

6 different texture, shiny - 19 x 11 h 6 - silver plated (cups gilded inside)

AT TABLE

ZANETTO

41

Drinking



▲ **SET LIQUOR 12**
smooth & shiny - 27x27 h 23
0157 – silver plated & copper
12 shot glasses



SET LIQUOR 20
smooth & shiny - dm 36 h 23
0158 – silver plated & titanium plated
20 shot glasses

v > **9168** champagne bucket **DIONISO**
texture Aghi orizzontale - h 24 dm 21
9168 silver plated
9168B brass (beeswax coating)



^ champagne bucket **EVOLUZIONE**
Smooth & shiny - h 29 dm 29
9668 silver plated
9668B plus plated (no tarnish)



^ champagne bucket on stand **GERMOGLIO**
texture Aghi - h 91 dm 26
9138 Plus plated (no tarnish)
9138B brass (varnished)



^ **9850L** champagne bucket **VELVET !**
text. Canapa – light gold - h 22 dm 20



^ **9850** champagne bucket **VELVET**
text. Canapa – silver plated - h 22 dm 20



^ **9518** champagne bucket **VIE**
texture Vie – silver plated - h 24 dm 21



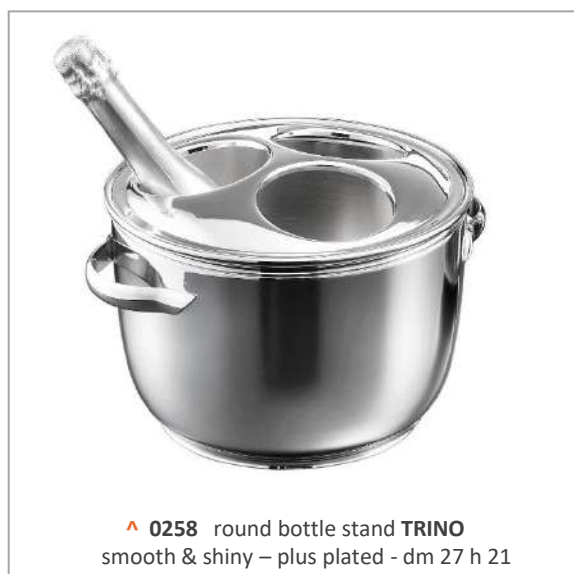
^ **9368** champagne bucket **AVANGARDE**
texture Aghi - silver plated - dm 19 h 23



^ **0250** champagne bucket **AURELIO**
smooth & shiny - plus plated - dm 21 h 21



< **7825** centerpiece / round bottlestand
VELVET 1
 texture Canapa - light gold - dm 43 h 22



^ **0258** round bottle stand **TRINO**
 smooth & shiny – plus plated - dm 27 h 21



^ **9350** bowl/round bottle stand **SATURNO**
 texture Aghi - silver plated - dm 34 h 19

> round bottle stand **BOLLE**
 smooth & shiny

0218 big bowl **SANGRIA** silver
 plated, plexi - dm 35 h 20

0217 plate **SGOCCIOLO**
 silver plated - dm 41 h 2

0219 bottle support
 silver plated - dm 11 h 16

0221 complete set 6 pcs
 silver plated, plexi - dm 41 h 20



ZANETTO



Drinking



< ^ 7866 glacette **VELVET 1**
texture Canapa – light gold - h 22 dm 14
Insulated san containers to be glazed before using



^ 9520 glacette **VIE**
texture Vie – silver plated - h 29 dm 19



^ 9166 glacette **MAGNUM**
texture Rettangoli - h 22 dm 13
fits to magnum bottles - silver plated



^ 9356 glacette **NEWLIFE**
texture Aghi - h 22 dm 14 - silver plated



^ 0366 glacette **PIBO**
smooth&shiny – plus plated - h 22 dm 13



^ 0367 glacette & pitcher **PIBO**
smooth&shiny – plus plated - h 27 dm 13



^ 0067 glacette **POLARIS**
smooth&shiny – plus plated - h 24 dm 16



^ **9515** thermic ice bucket **VIE**
texture Vie – silver pl. - dm 20 h 17 - lt 2,00



^ **9514** ice tongs **VIE**
texture Vie – silver plated - length 19



^ **9505** thermic ice bucket with tongs **VIE**
texture Vie – silver pl. – dm 18 h 15 - lt 1,40



^ **9865** thermic ice bucket **VELVET**
Text. Canapa – silver pl. - dm 20 h 17 - lt 1,40



^ **0365** thermic ice bucket **PIBO** -
plus plated
smooth & polished
dm 16 h 20 - cap. lt 2,0



^ **9365 /9365-2** therm. ice bucket **AQUARIUS**
texture Aghi - silver plated dm 16 h 19
lt 1,40 / dm 17 h 23 lt 2,0



^ **7848** Ice tongs **VELVET 1**
texture Canapa – light gold
length 17



^ **7849** Ice bucket **VELVET 1**
texture Canapa – light gold
dm 15 h 15



^ **9849** ice bucket **VELVET**
texture VELVET – silver pl. - dm 15 h 15

^ **9848** ice tongs **VELVET**
texture VELVET – silver pl. - length 20



^ **0249** ice bucket **AURELIO**
smooth & shiny – plus pl. - dm 15 h 15



^ wine server **MERLO**
texture Aghi - h 22 21x10
9167 silver plated - **9167B** brass



^ **0794** round under bottle **GALLERIA**
smooth & shiny – plus pl. - dm 12 h 5



^ **0070** funnel-filter with stand **FUN**
smooth & shiny – plus pl. - dm 11 h 14



^ bottle opener **DROP**
Texture Fili & Palline - 17 x 8
9118 silver pl. - **9118B** brass



Thermic pitchers



^ 7859 thermic pitcher **VELVET 1**
texture Canapa - brass
h 30 dm 10 - cap. lt 0,75



^ 7869 thermic pitcher with click cap **VELVET 1**
design Enrico Z - texture CANAPA, shiny light gold
h.34 dm 10 (13) cap. lt 1,0



< ^ thermic pitcher **OSTERIA**

Smooth&shiny – silver plated:

9664-2 h 23 - cap. lt 0,35

9667-2 h 32 - cap. lt 1,00

Texture Aghi – silver plated:

9664 h 23 - cap. lt 0,35

9667 h 32 - cap. lt 1,00





▲ thermic pitcher **ENERGIA**
Texture Aghi orizzontale - h 29 - lt 0,75
9366 silver plated



▲ thermic pitcher **AIRONE**
smooth & shiny - plus plated
0165 h 27 lt 0,50 - **0166** h 30 lt 0,75 - **0167** h 33 lt 1,00

▼ thermic pitcher **ROSALIA** - smooth & shiny
plus plated - cap. lt 0,50
0159 screw closing cup - **0159-2** press closing cup

▼ thermic pitcher **HIDALGO** - smooth & shiny
plus plated - cap. lt 1,00
0160 screw closing cup - **0160-2** press closing cup



Tea and coffee





^ **0355** tea&coffee set 5 pcs **EYE** - silver plated - smooth&shiny - **0351** coffee-pot **EYE** h 23 dm 9 **0352** tea-pot **EYE** h 18 dm 11 - **0353** sugar bowl **EYE** dm 9 h 8 - **0354** milk-jug **EYE** h 10 dm 6



^ **0350** tray **EYE** - silver plated
smooth&polished - 42 x 35



^ **0345** milk&sugar **EYE** set 4 pcs - silver plated
0342 / 0353 / 0354 / 0358
0342 small oval tray **EYE** - 21 x 16



^ **0358** little spoon **EYE**
silver plated - length 11



^ **0357** miniset breakfast **EYE** - 3 pcs
16 x 10 h 7 - platinum plated



^ tea-pot **GAIA** - h 20 10x10 - lt 1,25
9562 Silver plated



^ creamer **GAIA** - h 8 8x8 - lt 0,375
9554 Silver plated



^ sugar-bowl **GAIA** - h 8 8x8 - lt 0,375
9563 Silver plated



^ little spoon **GAIA** - length 14
9560 Silver plated



^ square tray **GAIA** - 41x36 h 3
9558 Silver plated



^ rectangular tray **GAIA** - 52x37 h 3
9559 Silver plated

- ▼ tea and coffee set **EBONY**
5 pieces - texture Aghi orizzontale
9315 silver plated - 19315 sterling silver gr. 3490



▲ oval tray **EBONY** - texture Aghi - 52x33
9310 silver plated - 19310 sterling silver gr. 1270



▲ coffee pot **EBONY** - h 23 dm 9
9311 silver pl. - 19311 sterling sil. gr 830



▲ tea pot **EBONY** - h 18 dm 11
9312 silver pl -19312 sterling sil. gr 840



▲ milk jug **EBONY** - h 10 dm 6
9314 silver pl.-19314 sterling sil. gr 310



▲ sugar-bowl **EBONY** - h 11 dm 7
9313 silver pl.- 19313 sterling sil. gr. 220



^ **9320** breakfast set **EBONY**
4 pcs - texture Aghi - 20x12 h 13
silver plated



^ coffee-pot **EBONY FOR TWO**
Texture Aghi - dm 9 h 15 - lt 0,75
9311-2 silver plated



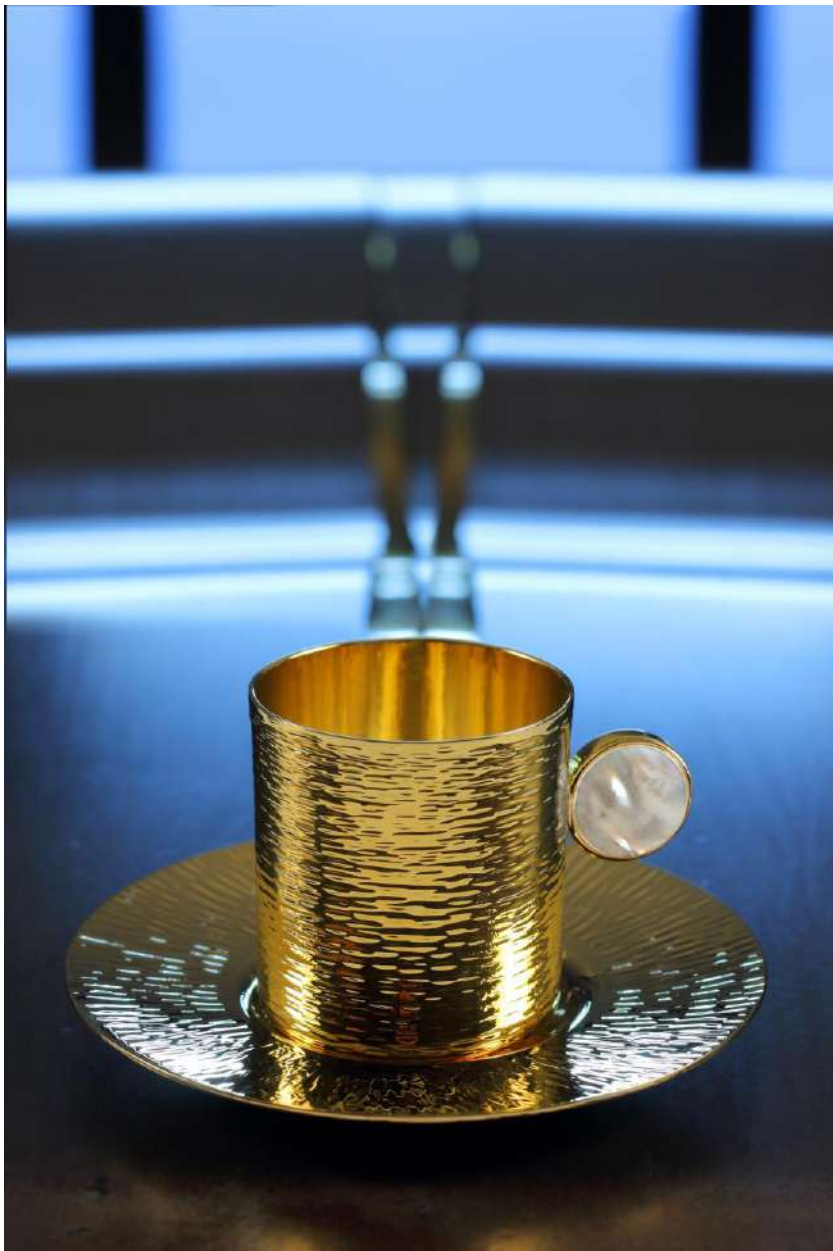
^ **9177-2** teabags holder **BIPOP**
texture Aghi - silver plated
16 x 10 h 7



^ **0359** tea filter with stand **ITALIA**
dm 9 h 7 - platinum plated



^ oriental tea cup **KARAMA** - texture Aghi, shiny - dm 12 h 9
Cup & plate - **3127** Silver plated (gilded inside) - **3127R** platinum plated (gilded inside)



^ coffee cup **BUS** - **3131G** gold plated
texture aghi - mother of pearl - dm 10(5) h 5



^ coffee cup **BUS**
texture aghi - mother of pearl - dm 10(5) h 5
3131R platinum pl - **3131** silver plated



^ coffee stick **BUS** - length 9
3132 silver plated
3132R platinum pl.- **3132G** gold pl.



^ thermic coffee cup **MERGELLINA** - texture Aghi, shiny - dm 6 h 5
3121 Silver plated (gilded ins.) - **3121R** platinum plated (gilded ins.)

^ **3123** coffee set **AROMA**
6 different texture, shiny - dm 24 h 5
silver plated (cups gilded inside)

Breakfast





^ 9503 sugar bowl **VIE** - silver plated
texture Vie - dm 10 h 11



^ 9500 little spoon **VIE**
silver plated - texture Vie - l. 16



^ 9603 sugar bowl **CAPRICCIO**
silver plated - texture Aghi - dm12 h 12



^ 9177 sugar bags holder **BIPOP**
silver plated
texture Aghi - 9x6 h 5



^ ice cream bowl with saucer, sauce stand & honey dish
AQUARIUS
texture Aghi raggiera - dm 14 h 5
9302 silver plated - 9302R platinum plated



^ butter holder with cover **DROP**
texture Aghi - 19x12 h 7
9330 silver pl. - 9330R platinum pl.



^ 2103 butter holder **BINARIO**
plus plated - 23x10 h6



^ indiv. butter holder **AQUARIUS**
texture Aghi - dm 11 h 7
9303 silver pl. - 9303R platinum pl.



< double marmalade hold. **ITALIA**
smooth & polished - l. 22 h 9
0029 silver plated



> triple flakes holder **ITALIA**
smooth & polished - dm 20 h 9
0032 silver plated



^ **2171** breakfast set **BINARIO** plus
plated - 22x15 h5



^ **0034** toast stand **ITALIA**
plus plated - 22x15 h9



^ **0020** egg-cup **ITALIA**
dm5 h5 - silver plated



Baskets & Fruit bowls



^ 7822 bowl & bread basket **VELVET 1**
dm 18 h 6 - texture Canapa - light gold



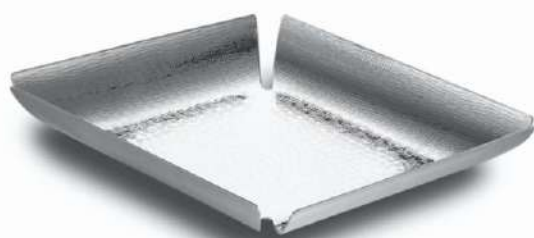
^ 9534 oval basket **VIE**
Texture Vie - shiny - 19x14 h 7 - silver plated



^ 9333 square basket **SOLE**
Texture Aghi raggiera - shiny - 18x18 h 5 - silver pl.



v 9822 bread basket with cotton cloth **VELVET**
texture Velvet - silver plated - dm 30 h 7



^ square basket **UNO**
texture Intreccio - shiny - 20x20
9212 silver plated - **9212B** brass



^ 9352 round basket **ANYL**
texture Aghi concentrica - shiny - dm 30 h 7 - silver pl.



^ bowl **SOLE** - texture Aghi raggiera - shiny
silver plated - **9343** dm 12 h 4 - **9344** dm 16 h 5
9345 dm 20 h 6 - **9345-2** dm 24 h 7



^ fruit bowl **SATURNO**
texture Aghi - shiny - dm 33 h 10
9325 silver plated - **9325B** light gold



^ round basket **GALLERIA**
plus plated
0721 dm 16 - **0721-2** dm 24



^ square bread basket **Galleria**
plus plated
0713 20 x 20



^ oval bread basket **GALLERIA**
plus plated
0724 20x16 - **0724B** 26x19



^ bowl **SETTANTADUE**
texture Acqua - shiny - silver plated
0072 dm 21 h 7 - **0074** dm 26 h 9



^ **0254** oval basket **ITALIA**
smooth & shiny - plus plated - 27x20 h 5



Salad bowls



^ **9836** salad bowl **VELVET**
texture Velvet - matt - 42x37 h8 - silver plated



^ **9851** pair of salad servers **VELVET**
texture Velvet - matt - l. 27 - silver plated

v **9322** salad bowl **AQUARIUS**
texture Aghi - shiny - dm 39 h 8 - silver plated



^ **9323** pair of salad servers **ACQUA**
smoot & shiny - l. 29 - silver plated



^ **9336 bowl URANO**
texture Aghi - dm 31 h 12 - silver plated

^ **9335 bowl URANO**
texture Aghi - dm 16 h 6 - silver plated



^ **2126 salad bowl BINARIO**
dm 25 h 9 - plus plated



^ **2156 fruit salad bowl BINARIO**
dm 23 h 11 - plus plated

^ **2155 sauce stand BINARIO**
dm 12 h 8 - plus plated



To flavor



^ 7806 salt & pepper **VELVET 1**
11x5 h 12 - texture Canapa - light gold

^ 7807 oil & vinegar stand **VELVET 1**
15x6 h 24 - texture Canapa - light gold



^ 9805 cruet set **VELVET**
texture Velvet - silver plated - 16x14 h16



^ cruet set **DROP**
texture Aghi raggiera - dm 15 h 21
9305 silver plated - 9305R platinum plated



^ 0305 cruet set **ITALIA**
plus pated - 21x14 h 21



^ 2105 cruet set **BINARIO**
plus plated - 21x7 h 22



^ 9151 oil dispenser **DADA**
texture Acqua - plus plated - dm 15 h 17



> **EYES oil and vinegar**

The lids of the two containers - oil and vinegar cruet - have different textures. They open with a hinge system. The oil cruet is decorated with small spheres imitating the letter O, the vinegar cruet has a fishbone effect to evoke the letter V that stands for vinegar.

textures ACQUA, PALLINE & SPINAPESCE

17 x 7 h 20

9250 Silver plated

9250R platinum plated



> **EYES salt and pepper**

textures ACQUA, PALLINE & SPINAPESCE

17x7 h 20

9252 silver plated

9252R platinum plated



EYES Elegant, simple and precious. It is a work of true silversmith art that requires considerable skill, starting from creation of the most rounded and feminine shapes in the bottom part with the more squared and geometric forms in the upper part, and edges that are initially sharp which then soften and disappear ...



^ **9206** spices holder **ZENZI**
Textures MIX - 24x5 h 15
plus plated



^ **9208** sauces holder **SENF**
Textures MIX - 34x8 h 15
plus plated

ZENZI&SENF spice containers, with the elegant ACQUA & MIX texture in PLUS alloy (a galvanic treatment with an exclusive formulation that assures the metal an excellent gloss and a colour that is very similar to silver, making it completely stainless and increasing resistance to scratches).





> ^ cheese dish **VELVET 1**
texture Canapa - matt - dm 11 h 6
7802 light gold
7802A silver plated



^ cheese dish **DROP**
texture Aghi - dm 11 h 7
9304 silver plated



^ **0304** cheese dish **ITALIA**
dm 13 h 8 - plus plated



^ **2102** cheese dish **BINARIO**
dm 10 h 8 - plus plated



^ **2123** sauce stand **CESTELLO**
18x12 h 7 - plus plated

> sauce stand **TUCANO**
texture Aghi - 19x11 h 7
9161 silver plated



^ salt & pepper **BEPOP**
texture Aghi - 6x4 h 7
9152 silver pl. - **9152R** platinum pl.
19152 sterling silver gr. 220



^ rectangular small tray **PASSIONI**
texture Aghi - 15x10
9153 silver pl. - **9153R** platinum pl.
19153 sterling silver gr 120



^ tabasco holder **AQUARIUS**
texture Aghi - h 16 dm 4
9301 silver pl. - **9301R** platinum pl.

Serving dishes





^ **2132-2133** rectangular dish **BINARIO** -
plus plated
38 (46) x 25 - 42 (52) x 28



^ **2139-2140-2141** oval dish **BINARIO** -
plus plated
32(40)x23 - 36(45)x 26 - 40(50)x29



^ **2138** round dish **BINARIO**
plus plated - dm 27 (34) h 6



^ **2145** giant rectangular dish **BINARIO**
plus plated - 53 (65) x 32 h 9



^ **2134** soufflè dish **BINARIO**
plus plated - dm 19 (25) h 8



^ **2135-2136** round spaghetti dish
BINARIO - plus plated
dm 30 (41) h 8 - dm 36 (51) h 9



^ **2137** soup-tureen **BINARIO**
plus plated - dm 31 (46) h 15



^ 2160 round dish **BINARIO**
plus plated - dm 45 (56)



^ 2182 oval dish **BINARIO**
plus plated - 48 (60) x 39



^ 2185 oval dish **BINARIO**
plus plated - 48(59)x 33 h 9



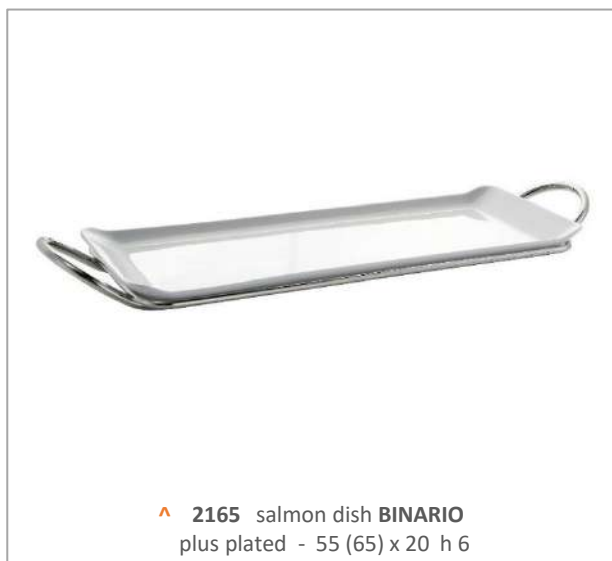
^ 2131 serving dish double **BINARIO**
plus plated - dm 40(54) h 7



< 2127 vegetable dish **BIS**
plus plated - dm 36 (51) h 9



^ 2187 fish tray **BINARIO**
plus plated - 65 (74) x 26



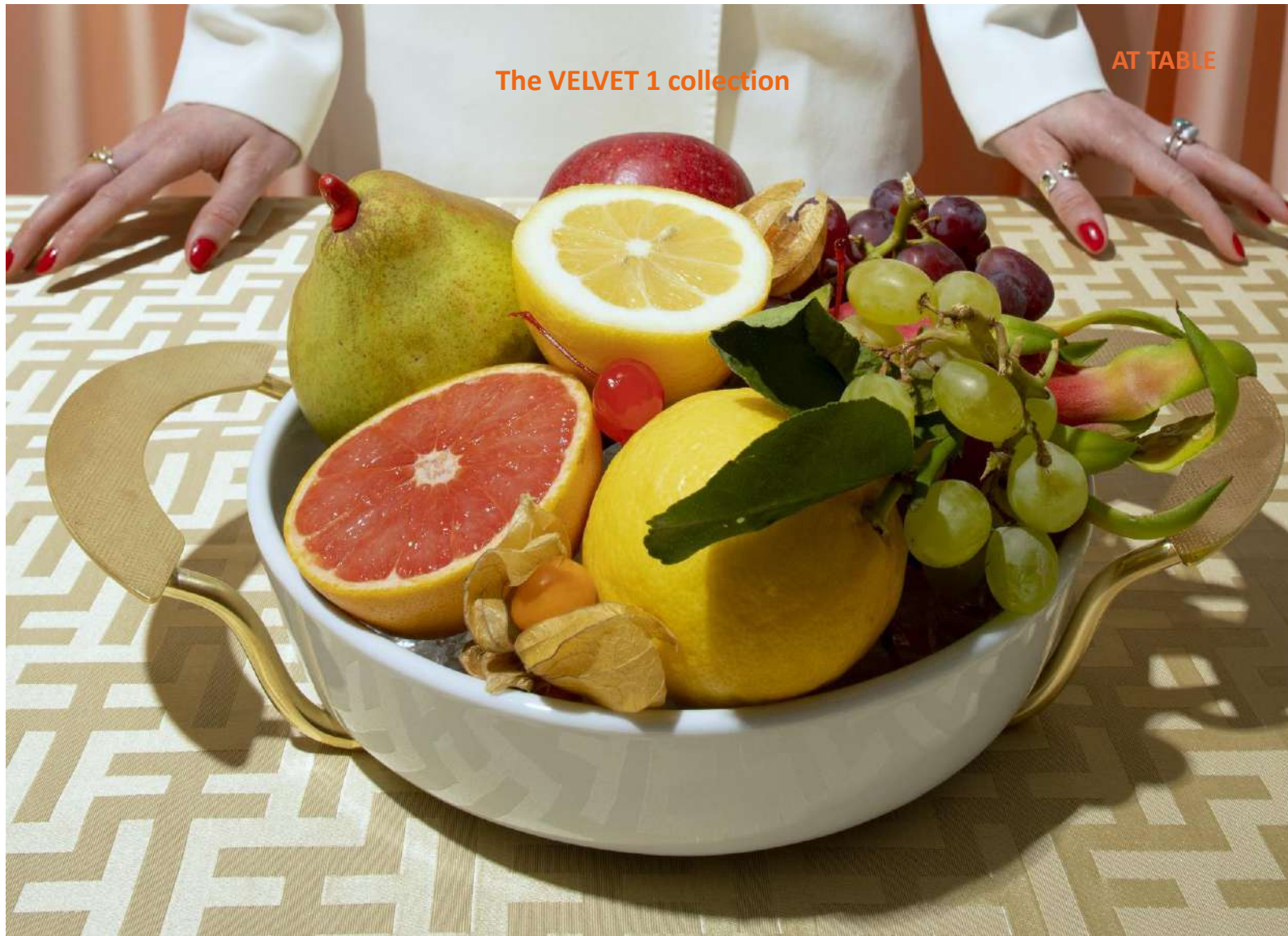
^ 2165 salmon dish **BINARIO**
plus plated - 55 (65) x 20 h 6



^ 2189 rectangular tray **BINARIO**
with heat-resistant glass
plus plated - 38 (50) x 32 h 5



^ 2188 rectangular dish server **BINARIO**
plus plated - 47(64) x 32 h 9



< **7840** oval dish container **VELVET 1**
texture Canapa - light gold - 46x24 h 8

> **7838** round dish container **VELVET 1**
texture Canapa - light gold - 37x26 h 8





✓ **9332** rectangular dish **AQUARIUS**
texture Aghi - 47 x 24
silver plated



✓ **9338** round dish **AQUARIUS**
texture Aghi - dm 28
silver plated

✓ **9340** oval dish **AQUARIUS**
texture Aghi - 43 x 24
silver plated





^ **9840** oval dish **VELVET**
texture Velvet - 43x27 h 6
silver plated



^ **9832** rectangular dish **VELVET**
texture Velvet - 45x27 h 5
silver plated



^ **9836** spaghetti dish **VELVET**
texture Velvet - 37x32 h 6
silver plated



^ **0136** round spaghetti dish **ITALIA**
plus plated - dm 43 h 6



^ **0131-0132** rectangular dish **ITALIA**
plus plated
39 x 24 - 44 x 28



^ **0140-0141** oval dish **ITALIA**
plus plated
41 x 30 - 45 x 34



^ **0138** round dish **ITALIA**
plus plated - dm 32 h 6



^ **0134** soufflé dish **ITALIA**
plus plated - dm 26 h 9

V 0233 rectangular dish container
with cover **ITALIA** - 44x28
plus plated



V 0243 round dish container
with cover **ITALIA** - dm 32
plus plated



V oval dish container
with cover **ITALIA** - plus plated
0245 41x30 - **0246** 45x34





^ fish plate with cover **ITALIA**
silver plated - 68 x 28 h 11
0088 without dripper (2 pcs)
0089 with dripper (3 pcs)

^ fish plate **ITALIA**
silver plated - 68 x 28
0086 without dripper - **0087** with dripper (2 pcs)



^ **9351** soup-tureen **SATURNO**
texture Aghi - dm 36 h 27 - cap. lt 8
silver plated



^ **3115** rice bowl with plate **SATU**
dm 16 h 6 - texture Aghi - platinum plated



^ caviar bowl **GODMAN**
texture Aghi - dm 16 h 9
9337 silver plated - **9337R** platinum plated
19337 Sterling silver gr 440




^ **9336-2** small caviar bowl **MAN**
texture Aghi - dm 14 h 8 - silver plated



^ **2147** caviar bowl **BINARIO**
plus plated - 26x19 h 9

Thermal dishes



Product made of two metal layers; a silver plated alloy layer on the outside and a stainless steel one on the inside. Between the two layers there is a space filled with one centimeter thick insulating material. The insulated ice-cream bowl/soup tureen maintains food temperature for a long time: it is ideal for cold food such as ice-cream or for hot food such as soups.

- > round ice-cream bowl / thermic dish container - texture Aghi orizzontale - shiny
silver plated outside (varnished), stainless steel inside: **9369** dm 24 h 17
light gold outside (varnished), stainless steel inside: **9369B** dm 24 h 17



- ^ round thermic dish container – hot/cold – big - texture Aghi orizzontale - shiny
silver plated outside (varnished), stainless steel inside: **9370** dm 33 h 20 – **9370-2** dm 38 h 23 – **9371** dm 43 h 25
light gold outside (varnished), stainless steel inside: **9370B** dm 33 h 20 – **9370-2B** dm 38 h 23 – **9371B** dm 43 h 25



▲ oval thermic dish container (hot / cold)
 texture Aghi orizzontale - shiny - 41x29 h 23
 silver plated outside (varnished), stainless steel inside: **9360**
 light gold outside (varnished), stainless steel inside: **9360B**



< ▲ Hermetic belt with handle **OUTDOOR**
 Smooth & shiny - dm 33 h 20
E0070 varnished silver plated
E0070L varnished light gold



▲ > Round TRAVEL thermic dish/ice-cream bowl **SAFARI**
 Shiny, texture Aghi - dm 33 h 20
E9370 varnished silver plated
E9370L varnished silver plated & light gold





Trenchers & Cheese dishes



^ **7875** large rectangular trencher **VELVET 1**
texture Canapa - light gold - 49 (59) x 33



^ **7873** small rectangular trencher **VELVET 1**
texture Canapa - light gold - 35 (43) x 20



^ **9875** rectangular tray / trencher with corian plane **VELVET**
texture Canapa 75 - silver plated - 45x27 h 2



^ **0189** rect. cheese tray with smooth trencher **ITALIA**
silver plated - 45x32 h 2



^ **0190** rect. cheese tray with trencher and knife **ITALIA**
silver plated - 45x32 h 2





^ **0180** round cheese plate with trencher **ITALIA**
plus plated - beechwood - dm 36



^ **0163** cold cuts dish with trencher **ITALIA**
plus plated - beechwood - 46x20



^ **0175** rectangular meat dish with trencher **ITALIA**
plus plated - beechwood - 64x32



^ **2186** oval trencher **BINARIO**
plus plated - beechwood - 51(58)x36



^ **2181** round trencher **BINARIO**
plus plated - beechwood - dm 30 (37)



^ **2183** cheese cover **BINARIO**
plus plated - dm 27 h 14

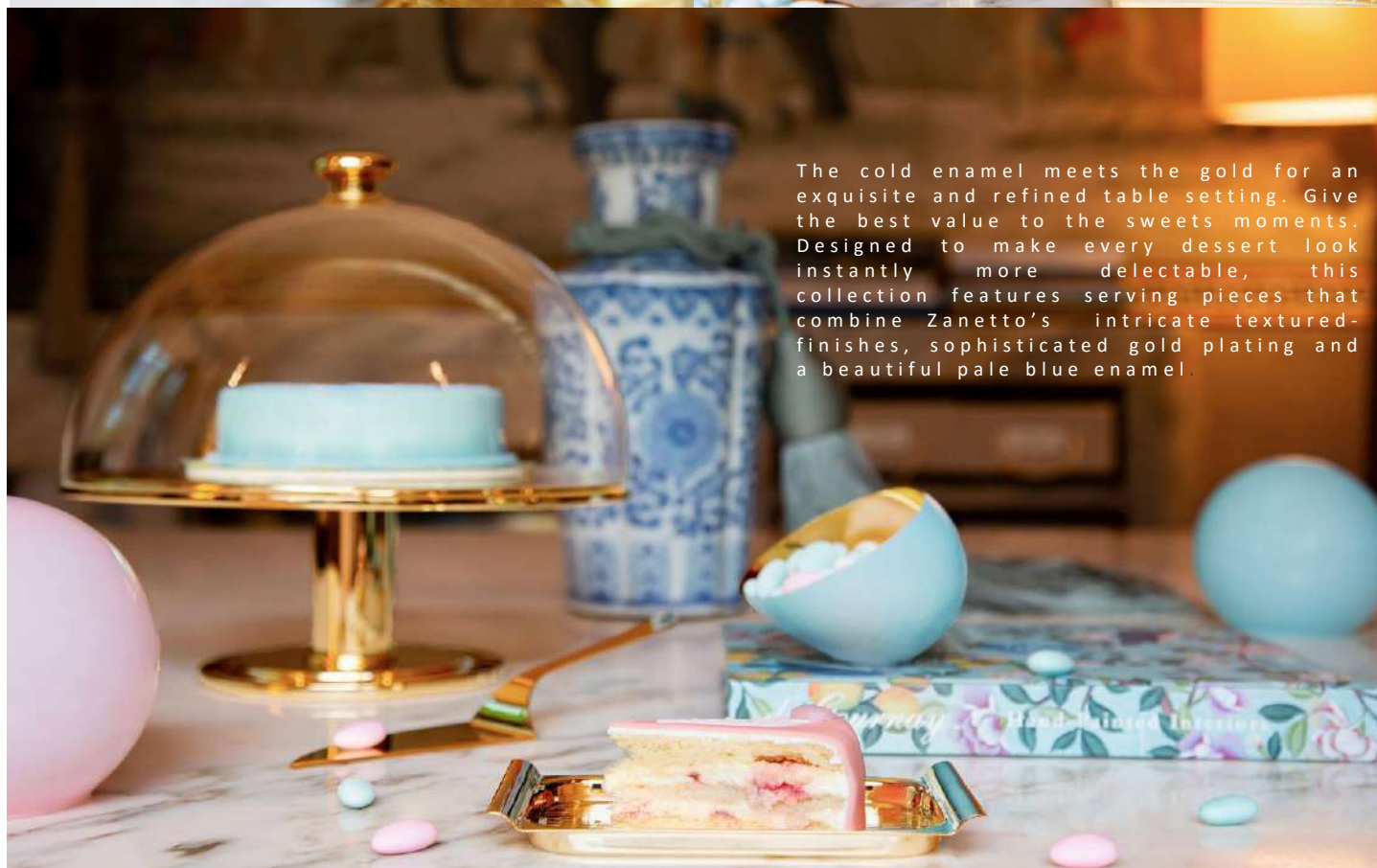


Cakes & Sweets



GOLDEN SWEETS

collection



The cold enamel meets the gold for an exquisite and refined table setting. Give the best value to the sweets moments. Designed to make every dessert look instantly more delectable, this collection features serving pieces that combine Zanetto's intricate textured-finishes, sophisticated gold plating and a beautiful pale blue enamel.



^ **7659** rectangular tray **VANCOUVER 2**
texture Rettangoli, shiny gold plated - 64 x 11



^ **7643** small tray **VANCOUVER 2**
texture Rettangoli, shiny gold plated
19 x 11

V **7691** cake knife **PASSIONI 2**
length 30 - Smooth, shiny gold plated



^ **7692** cake server **PASSIONI 2**
length 26 - smooth, shiny gold plated



^ **7630** cake-pan **BINARIO 2**
dm 33 (41) - smooth, shiny gold plated



^ **7680** pleasures offer **KIWI 2**
Texture Aghi - shiny gold plated, enamel
dm 21 h 13



^ dessert cutlery set **BAROCO 2**
shiny gold plated
08/4/G fruit fork - 17 x 2
08/5/G fruit knife - 21 x 2
08/6/G little spoon - 13 x 3





^ 7651 tumbler **ARQO 2**
smooth, shiny gold plated, enamel
dm 8 h 9



^ 7652 cold drinks pitcher **COIMBRA 2**
smooth, shiny gold plated
dm 20 h 20



^ 7626 bowl **EASTER 2**
Texture Corteccia – shiny gold plated,
enamel - 13 x 10 h 9



^ 7694 small stand **COMETA 2**
texture Aghi - shiny, gold plated
h 20 dm 16



^ 7685 cake stand **SOLE 2**
texture Aghi - shiny, gold plated
dm 33 h 12



< 7687 cake stand with
cover **SOLE 2**
texture Aghi
shiny, gold plated
dm 33 h 33



^ 9243 small rect. Tray **VANCOUVER I**
text. Rettangoli - silver pl. - 19x11



^ 9243-2 small rect. Tray **VANCOUVER**
smooth - silver pl. - 19x11



^ 9245 small rect. Tray **VANCOUVER II**
text. Rettangoli - silver pl. - 23x12



^ 9272 small rect. Tray **VANCOUVER III**
text. Rettangoli - silver pl. - 27x10



^ 9257 small sq. tray **VANCOUVER IV**
text. Rettangoli - silver pl. - 20x19



^ 9528 cookie jar **VIE**
texture Vie - silver plated - h 23 dm 20



^ 2130 cake-pan **BINARIO**
plus plated - dm 33 (41)



^ 2179 cake plate **BINARIO**
plus plated - dm 36 (46)



^ **9385** cake stand **SOLE**
texture Aghi - silver plated - dm 33 h 12



^ **9387** cake stand with cover **SOLE** - dm 33 h 32,5
9386 cover **SOLE** - dm 32 h 20,5
silver plated, plexiglass



^ small stand **DROP**
texture Aghi - h 16 dm 16-11
9395 Silver plated - **9395R** platinum plated



^ **9394** small stand **COMETA**
texture Aghi - silver plated - h 20 dm 16-11



^ etagère **AQUARIUS**
texture Aghi - silver plated
9396 2 plates -h 34 dm27-20
9397 3 plates-h53 dm33- 27-20

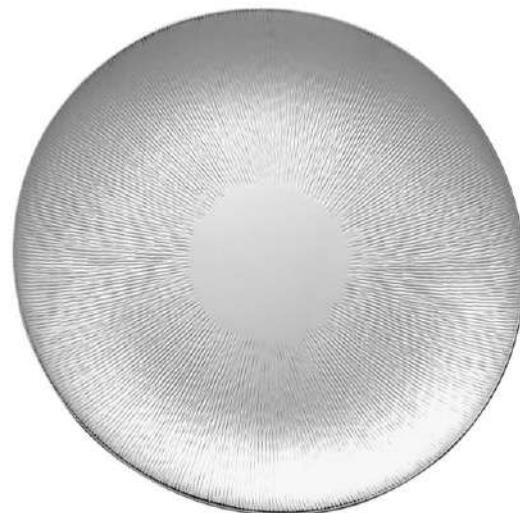
AT TABLE

Your table place



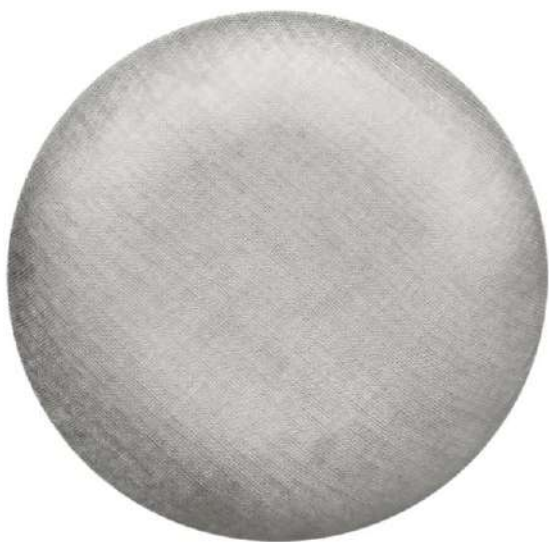
^ plate **UNO** - texture Intreccio - shiny

underplate - 31x31 - **9291** silver pl. - **9291B** brass
 coaster - 9x9 - **9292** silver pl. - **9292B** brass
 bread plate/underbottle - 13x13 - **9293** silver pl.
9293B brass



^ plate **SOLE** - texture Aghi - shiny

underplate - dm 33 - **9381** silver plated
 coaster - dm 9 - **9382** silver plated
 bread plate/underbottle - dm 13,5 - **9384** silver pl.
 decanter plate - dm 16 - **9384-2** silver plated



^ plate **VELVET** - texture Velvet - matt

underplate - dm 33 - **9891** silver plated
 coaster - dm 12 - **9892** silver plated
 bread plate/under bottle - dm 14 - **9894** silver plated



^ plate **ITALIA** - smooth - shiny

underplate - dm31 - **0291** silver pl. - **1291** sterling silv.
 coaster - dm12 - **0292** silver pl. - **1292** sterling silver
 bread plate - dm14 - **0293** silver pl. - **1293** sterling silv
 Under bottle - dm16 - **0294** silver pl. **1294** sterling s.
 Decanter plate - dm 19 - **0295** silver plated



^ dinner plate **SUN** – dm 33 – text. Aghi
3001H Gold PVD - 3001M Red PVD



^ dinner plate **NUVOLA** – dm 33 – Palline
3002H Gold PVD - 3002M Red PVD



v 9237 napkin ring **ANGOLO**
silver plated & brass, texture ACQUA – dm 5
design *Filippo Fiora & Filippo Cirulli*



^ 9231 place mat **ANGOLO**
silver plated & brass, texture ACQUA - 40x30
design *Filippo Fiora & Filippo Cirulli*





^ 6318A napkinring **SILVER RIBBON**
set 4 pcs - silver plated - 3x5,5x3,5



^ 6318B napkinring **GOLD RIBBON**
set 4 pcs - brass - 3x5,5x3,5



^ 6318C napkinring **PINK RIBBON**
set 4 pcs - copper - 3x5,5x3,5

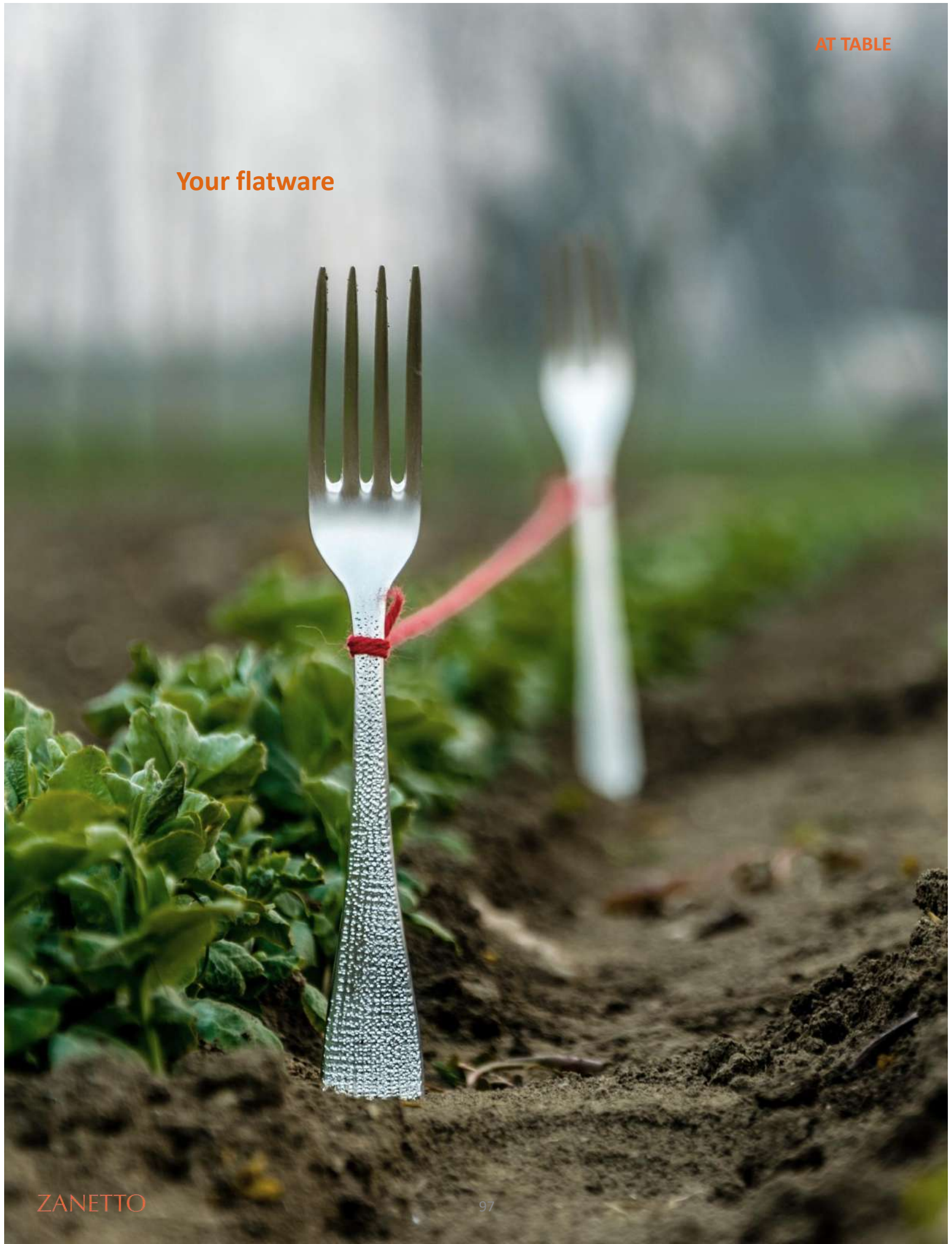
- > napkin ring / cutlery rest BIPOP
texture Aghi - shiny - 7 x 3
9117 platinum plated



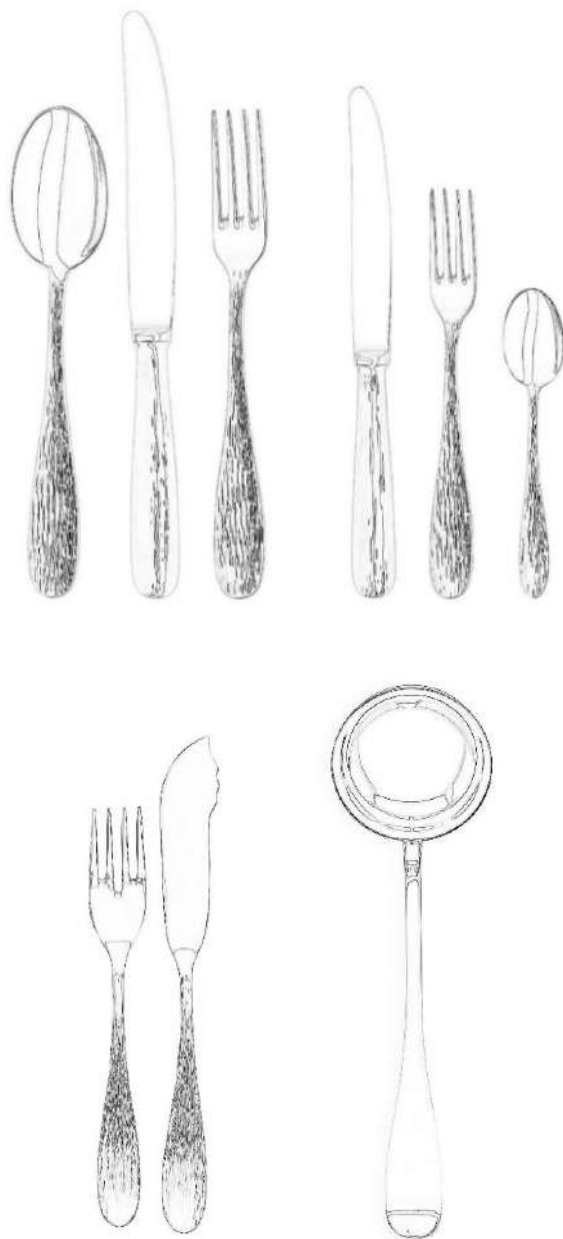
- v 9116 - napkin-rings couple DOBLO
texture Sahara (female) and Aghi (male)
silver plated - polished & satin - 6 x 7



Your flatware



Available Pieces



* ask to our offices terms and details of supply of any special piece

Finishes

A - SILVER

Silver, defined as a lunar precious metal by virtue of its exceptional whiteness, is our most historical finish. We craft this metal in various ways, from satin-finished to pure transparency for unrivalled results in terms of style and elegance.

ON REQUEST:

H - GOLD PVD

M - RED PVD

PVD – physical vapour deposition (titanium/zirconium treatment)

PVD is a technology used for the deposition of thin metal films. The process is performed in a vacuum, and as it is a physical process it offers superior characteristics with respect to any other chemical or electrochemical treatment. PVD is ideal for all quality products needing high chemical-physical performance, and can obtain a wide variety of colours. Its many virtues include: exceptional surface hardness (1000:2500 HV); optimal resistance to wear, scratching and abrasion; resistance to corrosion; resistance to UV rays; resistance to acid solvents, alkalis and domestic products; resistance to perspiration; hypo-allergenic; negligible environmental impact.

R - PLATINUM

Rhodium is a silver metal tending on white, offering optimal hardness and an excellent degree of resistance to corrosion. It belongs to the platinum category and is the most precious metal in the world: a feature that depends both on the difficulty of extraction and its extremely limited availability. Rhodium plating results in an impressive shine, with extraordinary reflective properties, increasing resistance to abrasion and oxidation, while improving the aesthetic impact of the article, giving it a more polished look and ensuring a durable, wear-resistant finish.





^ 01 model ACQUA

texture Aghi
surface shiny

A silver plated



02 model ARIA

texture Velvet
surface matt

A silver plated



03 model RIFLESSI

smooth
surface shiny

A silver plated



04 model RAIN

texture Aghi
surface shiny

A silver plated



▲ 05 model ETHER

texture Canapa
surface matt

A silver plated



▲ 06 model **MIROIR**

smooth
surface shiny

A silver plated



▲ 08 model **BAROQUE**

smooth
surface shiny

A silver plated



^ **01/10** fish fork & knife model **ACQUA**
texture Aghi - surface shiny
A silver plated



^ **02/10** fish fork & knife model **ARIA**
texture Canapa - surface matt
A silver plated



^ **03/10** fish fork & knife model **RIFLESSI**
smooth & shiny
A silver plated



^ **LADLE**
available in the models:
01/13 ACQUA - 02/13 ARIA - 03/13 RIFLESSI

**Serving cutlery
and table accessories**



▼ **7856** spaghetti server **VELVET 1**
Gold PVD - I. 26



▲ **9856** spaghetti server **VELVET**
Silver plated - I. 26

▼ **7853** lasagne server **VELVET 1**
Gold PVD - I. 26



▲ **9853** lasagne server **VELVET**
Silver plated - I. 26

▼ **7854** rice server **VELVET 1**
Gold PVD - I. 26



▲ **9854** rice server **VELVET**
Silver plated - I. 26

▼ **7800** cheese spoon **VELVET 1**
Gold PVD - I. 13



▲ **9800** cheese spoon **VELVET**
Silver plated - I. 13



▲ **9524** ice-cream spoon **VIE**
Silver plated - I. 23



▲ **0049** ice-cream spoon **ITALIA**
silver plated - I. 24



▲ **0051** ice spoon **ITALIA**
Silver plated - I. 26



▲ **9192** cake server **PASSIONI**
silver plated - I. 26



▲ **9191** cake knife **PASSIONI**
silver plated - I. 30



▲ **9193** set 2 pcs cake server **PASSIONI**
silver plated



^ 0052 cake server ITALIA
silver plated - l. 29



^ 0053 lasagne server ITALIA
silver plated - l. 27



^ 0054 rice server ITALIA
Silver plated - l. 26



^ 0056 spaghetti server ITALIA
Silver plated - l. 28



^ 0106 spaghetti tongs ITALIA
Silver plated - l. 26



^ 0107 bread tongs ITALIA
Silver plated - l. 23



^ 0108 asparagus tongs ITALIA
Silver plated - l. 27



^ 0109 sweet tongs ITALIA
Silver plated - l. 26



^ 0058 hors-d'oeuvre spoon ITALIA
Silver plated - l. 16



^ 0059 hors-d'oeuvre fork ITALIA
Silver plated - l. 16



^ 0057 sugar cube tongs ITALIA
Silver plated - l. 8



^ 9300 little spoon **AQUARIUS**
Silver plated - l. 15



^ 0200 little spoon **ITALIA**
Silver plated - l. 14



^ 0201 ladle **ITALIA**
Silver plated - l. 31



^ 0248 ice tongs **ITALIA**
Silver plated - l. 20



^ 0549 roast fork **ITALIA**
Silver plated - l. 25



^ 0550 roast knife **ITALIA**
Silver plated - l. 30



^ 0552 cheese knife **ITALIA**
Silver plated - l. 21



^ 0553 grana knife **ITALIA**
Silver plated - l. 15



^ 0554 butter knife **ITALIA**
Silver plated - l. 16



^ 0343 sum plate EYE - plus plated - 16x10 h 3



^ 9120 trivet NASTRO dm 18 h 2
texture Cortecchia - nickel plated



^ 0226 small round warmer ITALIA
plus plated - dm 12 h 7



^ 0227 round rechaud ITALIA
plus plated - dm 20 h 7



^ 0228 oval rechaud ITALIA
plus plated - 32 x 19 h 7



^ 0229 rectangular rechaud ITALIA
plus plated - 31 x 18 h 7



food warmers

Featuring a simple, elegant design, the food warmers keep dishes served at the table warm. It is very easy to use – just insert one or two tea candles in the special holders and place the serving dish (made of a heat-safe material like porcelain or heat-resistant glass) on the raised base.

THE CLASSICS

DERBY interprets the most classical English style and is for the most demanding: the characteristic edging is hand made and soldered. Excellent silverware craftsmanship also in the silver-plated alloy.



^ Oval tray **DERBY** - smooth & shiny
 Silver plated: **00485** 48 x 35 - **00486** 54 x 39
 Sterling silver: **01485** 48 x 35 gr. 1.200
01486 54 x 39 gr. 1.650



^ Oval tray with handles **DERBY** - smooth & shiny
 Silver plated: **00485-1** 48 x 35 - **00486-1** 54 x 39
 Sterling silver: **01485-1** 48 x 35 gr. 1.500
01486-1 54 x 39 gr. 1.950



^ Rectangular tray **DERBY** - smooth & shiny
 Silver plated: **00488** 38 x 26 - **00489** 43 x 30
00490 48 x 34 - **00498** 52 x 38 - **00499** 63 x 50
 Sterling silver: : **01488** 38 x 26 gr 920
01489 43 x 30 gr. 1150 - **01490** 48 x 34 gr. 1500
01498 52 x 38 gr 2.000



^ Rectangular tray with handles **DERBY** - smooth & shiny
 Silver plated: **00488-1** 38 x 26 - **00489-1** 43 x 30
00490-1 48 x 34 - **00498-1** 52 x 38 - **00499-1** 63 x 50
 Sterling silver: : **01488-1** 38 x 26 gr 1.120
01489-1 43 x 30 gr. 1350 - **01490-1** 48 x 34 gr. 1780
01498-1 52 x 38 gr 2.300

V plate **INGLESE** - smooth & shiny

Under plate massive border dm 31:

silver plated **00491** - sterling silver **01491** gr. 560

Under plate rounded border dm 31:

silver plated **00591** - sterling silver **01591** gr. 495

Coaster dm 10: silver pl. **00592** – sterling s. **01592** gr. 50

Bread plate dm 12: silver p. **00593** – sterling s. **01593** gr. 65

Bread plate dm 14: silver plated **00593-2**

Underbottle dm 14: silver p. **005594**–sterling s. **01594** gr90



^ tall underbottle **DERBY** - smooth & shiny - dm 14 h 4
 Silver plated: **00494**
 Silver plated & plexiglass **00494-2**



^ plate **BAROCCO** - smooth & shiny - silver plated
 Underplate **02491** dm 31
 Bread plate / underbottle **02494** dm 15



^ thermic ice-bucket **DERBY** - smooth & shiny
Silver plated / insulated san container
00465 h 22 dm 16



^ Glacette **DERBY** - smooth & shiny - h 22 dm 14
Silver plated / insulated san container **00466**
Sterling silver /insulated san container **01466** gr. 850



^ pitcher **BRUGES** - smooth & shiny
Silver plated: **00501** h 24 dm 12



^ Champagne bucket **DERBY** - smooth&shiny - h 23 dm 21
Silver plated **00468** - sterling silver **01468** gr 1.130
Ice-bucket **DERBY** - smooth & shiny
Silver plated **00467** dm 15 h 16



^ thermic piotcher **RIGATA**
smooth&shiny - screw closing cup
Silver plated: **00565** h 27 lt 050 -
00566 h 30 lt 0,75 - **00567** h 33 lt 1,00

Thermic pitcher RIGATA +
smooth & shiny - press closing cup
Silver plated **0566-2** h 30 lt 0,75



< tea and coffee set **LONDON**

smooth & shiny

COMPLETE SET (5 pcs): silver plated

00415 - sterling silver **01415** gr. 3.200

Coffe pot LONDON 19x15 dm 11:

silver plated **00411**

sterling s. **01411** gr. 650

Tea-pot LONDON 18x16 dm 12: silver

pl. **00412** - sterling silver **01412** gr. 660

Sugar-bowl LONDON 11x13 dm 10:

silver plated **00413**

sterling silver **01413** gr. 370

Milk-jug LONDON 10x13 dm 10: silver

pl. **00414** - sterling silver **01414** gr 310

Rectangular tray LONDON 44x31:

silver plated **00410**

sterling silver **01410** gr. 1.220



^ round basket **DERBY** - smooth & shiny
Silver plated **00422** dm 26 h 6



^ oval basket **DERBY** - smooth & shiny
Silver plated **00424** 26x19 h 8



^ dish container **DERBY** - smooth & shiny - silver plated (pyrex glass inside)

OVAL: 00445 41x30 - **00446** 45x34

RECTANGULAR: 00433 44x28



▲ Round centrepiece **CORDOBA** - smooth & shiny
Silver plated **00532** dm 27 h 14

▼ rectangular Butter holder **DERBY** - smooth & shiny
silver plated-plexiglass **00430** 19x13 h 8



▲ round indi. Butter holder **DERBY** - smooth & shiny
silver plated-crystal glass **00403** dm 11 h 9



▲ sauce stand **DERBY** - smooth & shiny - 24x11 h 10
silver plated **00461** - sterling silver **01461** gr. 350



▲ Etagere with plates **COLONY**
smooth & shiny – silver plated
00595 2 plates h 33 dm 20-16
0596-2 2 plates h 44 dm 31-24
00596-3 3 plates h 60 dm 38-31-24



▲ Etagere with bowls **COLONY**
smooth & shiny – silver plated
00597-2 2 bowls h 44 dm 31-24
00597-3 3 bowls h 60 dm 38-31-24



▲ oval cruet set **DERBY** - smooth&shiny - 25x18 h 24
 Silver plated **00405** - sterling silver **01405** gr. 790
 round cheese dish **DERBY** - smooth & shiny - dm 14 h 9
 silver plated **00404**



▲ oil & vinegar stand **DERBY** - smooth & shiny - l. 15 h 25
 silver plated **00407**
 salt and pepper **DERBY** - smooth&shiny - l. 11 h 13
 Silver plated **00406**



▲ cake server **DERBY** - silver plated
00452 l. 27



▲ lasagne server **DERBY** - silver plated
00453 l. 27



▲ rice server **DERBY** - silver plated
00454 l. 29



▲ spaghetti server **DERBY** - silver plated **00456** l. 35



▲ spaghetti tongs **DERBY** - silver plated **00457** l. 26

PERLES

This is a classical decoration,
interpreted with grace and
elegance and not overdone.
Original lines, rounded layers,
animated and nimble bodies for
objects designed
to carry out new functions.
All edges are hand done
and soldered.
The added parts are made
with the lost wax casting method.
The decorative elements
are burnished.



▲ round centrepiece **PERLES** - smooth & shiny
Silver plated **02349** dm 29 h 17



▲ Oval centrepiece **PERLES** - 35x25 h 14
Silver plated **02334** - sterling silver **12334** gr. 1.300



^ oval tray **PERLES** - 48x35
silver plated **02385** - sterling silver **12385** gr. 1.250



^ oval tray with handles **PERLES** - 48x35
silver plated **02385-1** - sterling silver **12385-1** gr. 1.550



^ rectangular tray **PERLES** - smooth & shiny
silver plated: **02388** 38x26 – **02389** 46x33 – **02399** 63x50
sterling silver: **12388** 38x26 gr. 850 – **12389** 46x33 gr. 1.200



^ rectangular tray with handles **PERLES** - smooth & shiny
silver plated: **02388-1** 38x26 – **02389-1** 46x33 – **02399-1** 63x50
sterling silver: **12388-1** 38x26 gr. 1.050 – **12389-1** 46x33 gr. 1.450



^ round tray **PERLES** - smooth & shiny
silver plated: **02377** dm 31 – **02379** dm 35 – **02382** dm 50



^ plate **PERLES** - smooth & shiny
silver plated: **02391** dm 31 – **02394** dm 15
Sterling silver: **12391** dm 31 gr. 560 – **12394** dm 15 gr. 150



^ oval dish **PERLES** - smooth & shiny
silver plated **02323** 44x32



^ rectangular dish container **PERLES** - smooth & shiny
silver plated **02312** 48x28



^ round soup-tureen **PERLES** - smooth & shiny
Silver plated **02342** dm 29 h 26



Oval dish container **PERLES** - smooth & shiny
Silver plated (pyrex glass) **02345** 41x30



^ tea and coffee set **PERLES** - smooth & shiny
COMPLETE SET (5 pcs): silver plated **02355** - sterling silver **12355** gr. 3.950



^ Coffe pot **PERLES** – h 28 w
19 silver plated **02351**
sterling silver **12351** gr. 850



^ tea pot **PERLES** – h 26 w 20
silver plated **02352**
sterling silver **12352** gr. 780



^ milk-jug **PERLES** – h 16 w10
silver plated **02354**
sterling silver **12354** gr. 380



^ sugar bowl **PERLES** – h 16
dm 10 - silver plated **02353**
sterling silver **12353** gr. 390



^ oval champagne bucket **PERLES** - smooth & shiny
Silver plated: **02357** 26x18 h 19



^ thermic ice bucket **PERLES** - smooth & shiny
Silver plated / insulated san container **02365** dm 16 h 20



^ oval basket **PERLES** - smooth & shiny – 28x20 h 8
silver plated **02324-2** - sterling silver **12324-2** gr. 430



^ square basket **PERLES** - smooth & shiny – 18x18 h 5
silver plated **02313** - sterling silver **12313** gr. 450



^ caviar bowl **PERLES** - smooth & shiny
silver plated **02358** dm 18 h 11



^ cruet set **PERLES** - smooth & shiny - 22x17 h 22
silver plated **02305** - sterling silver **12305** gr. 590



^ cheese dish **PERLES** - smooth & shiny - dm 12 h 8
silver plated **02302** - sterling silver **12302** gr. 220

Regina Anna

It is the reinterpretation of a style created in England at the beginning of the eighteenth century that we appreciate for its surprising linearity and sobriety.

Its peculiarity is the typical cord design on the edges and the lion head with ring. All edges are hand done and soldered. The added parts are made with the lost wax casting method.

The decorative elements are burnished.



Zanetto has reimagined their **Regina Anna** collection, creating a modern take on a classic design. The relaunch features new pieces to complement the collection, allowing for a more complete and versatile choice. The collection is available in both silver and gold finishes, offering a wide range of options to suit any style. This classic collection has been reimagined for the modern era, while retaining its timeless charm. Whether you're looking to add to your existing collection or starting fresh, the Regina Anna collection is a must-have.



^ pitcher **REGINA ANNA** - h 28 dm 12
0664 silver plated - 0664G gold plated



^ liquor cup **REGINA ANNA** - dm 5 h 7,5
0616 silver plated, gilded inside - 0616G gold plated
^ tumbler **REGINA ANNA** - dm 7,5 h 12,5
0617 silver plated, gilded inside - 0617G gold plated



^ thermic ice bucket **REGINA ANNA** - dm 16 h 22
0665 silver plated - 0665G gold plated
^ glacette **REGINA ANNA** - dm 14 h 23
0666 silver plated - 0666G gold plated



^ champagne bucket **REGINA ANNA** - dm 18 h 24
0668 silver plated - 0668G gold plated
^ ice bucket **REGINA ANNA** - dm 15 h 17
0667 silver plated - 0667G gold plated







- ^ rectangular dish container **REGINA ANNA** - 44 x 28
0632 silver plated – **0632G** gold plated
- ^ rect. dish container w/handles **REGINA ANNA**- 57 x 28
0632-1 silver plated – **0632-1G** gold plated



- ^ rect. dish container w/cover **REGINA ANNA** - 44 x 28
0633 silver plated – **0633G** gold plated
- ^ rect. dish container w/cover and handles **REGINA ANNA**
57 x 28 - **0633-1** silver plated – **0633-1G** gold plated



- ^ round dish container w/cover **REGINA ANNA**
dm 33 h 14 - **0643** silver plated – **0643G** gold plated
- ^ round dish container w/cover and handles **REGINA ANNA**
45 x 33 h 14 - **0643-1** silver plated – **0643-1G** gold plated
- > round dish container **REGINA ANNA** - dm 33
0638 silver plated – **0638G** gold plated
- > round dish container w/handles **REGINA ANNA** - 45 x 33
0638-1 silver plated – **0638-1G** gold plated



- ^ oval dish container **REGINA ANNA** - 41 x 30
0640 silver plated – **0640G** gold plated
- ^ oval dish container w/handles **REGINA ANNA** - 53 x 30
0640-1 silver plated – **0640-1G** gold plated



- ^ oval dish container w/cover **REGINA ANNA** - 41 x 30 h 15
0645 silver plated – **0645G** gold plated
- ^ oval dish container w/ cover and handles **REGINA ANNA**
53 x 30 h 15 - **0645-1** silver plated – **0645-1G** gold plated



^ **0670** round thermic dish container **REGINA ANNA**
silver plated, stainless steel inside - dm 32



^ **0670G** round thermic dish container **REGINA ANNA**
gold plated, stainless steel inside - dm 32



^ plate **REGINA ANNA** - dm 31
0691 silver plated - **0691G** gold plated

^ plate **REGINA ANNA** - dm 12 / dm 14 / dm 16
0692 / 0693 / 0694 silver plated
0692G / 0693G / 0694G gold plated

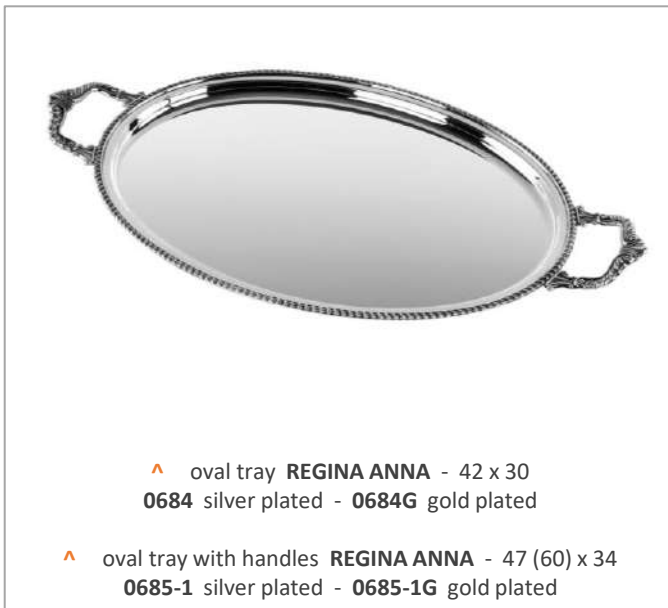
v oval platter **REGINA ANNA** - 43 x 32
0623 silver plated - **0623G** gold plated



^ round platter **REGINA ANNA** - dm 39
0620 silver plated - **0620G** gold plated



▲ rectangular tray **REGINA ANNA** - 33 x 22
0687 silver plated - 0687G gold plated



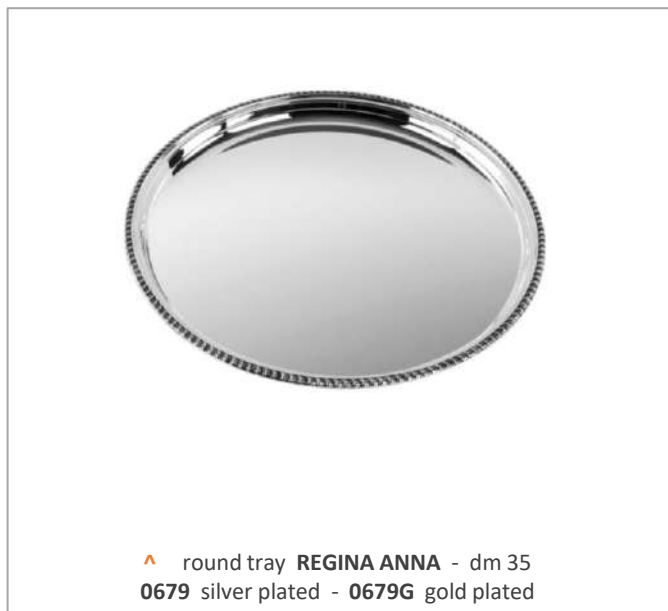
▲ oval tray **REGINA ANNA** - 42 x 30
0684 silver plated - 0684G gold plated

▲ oval tray with handles **REGINA ANNA** - 47 (60) x 34
0685-1 silver plated - 0685-1G gold plated



▲ rectangular tray **REGINA ANNA** - 42 x 29
0689 silver plated - 0689G gold plated

▲ rectangular tray with handles **REGINA ANNA**
51 (60) x 38 - 0689-1 silver plated - 0689-1G gold plated



▲ round tray **REGINA ANNA** - dm 35
0679 silver plated - 0679G gold plated







HOME DECOR

Decorating, creating an exceptional and unique living environment is a pleasure to give to others and to oneself. The Living line contains creations designed to decorate the home with style: vases, centerpieces, trays, candle holders, photo frames, room fresheners and more. Exquisite design objects, exclusively for those who love to surround themselves with refined beauty.

Bowls & centerpieces

Vases

Candelabras & votives

Ambiance perfumers

Picture frames

Desk

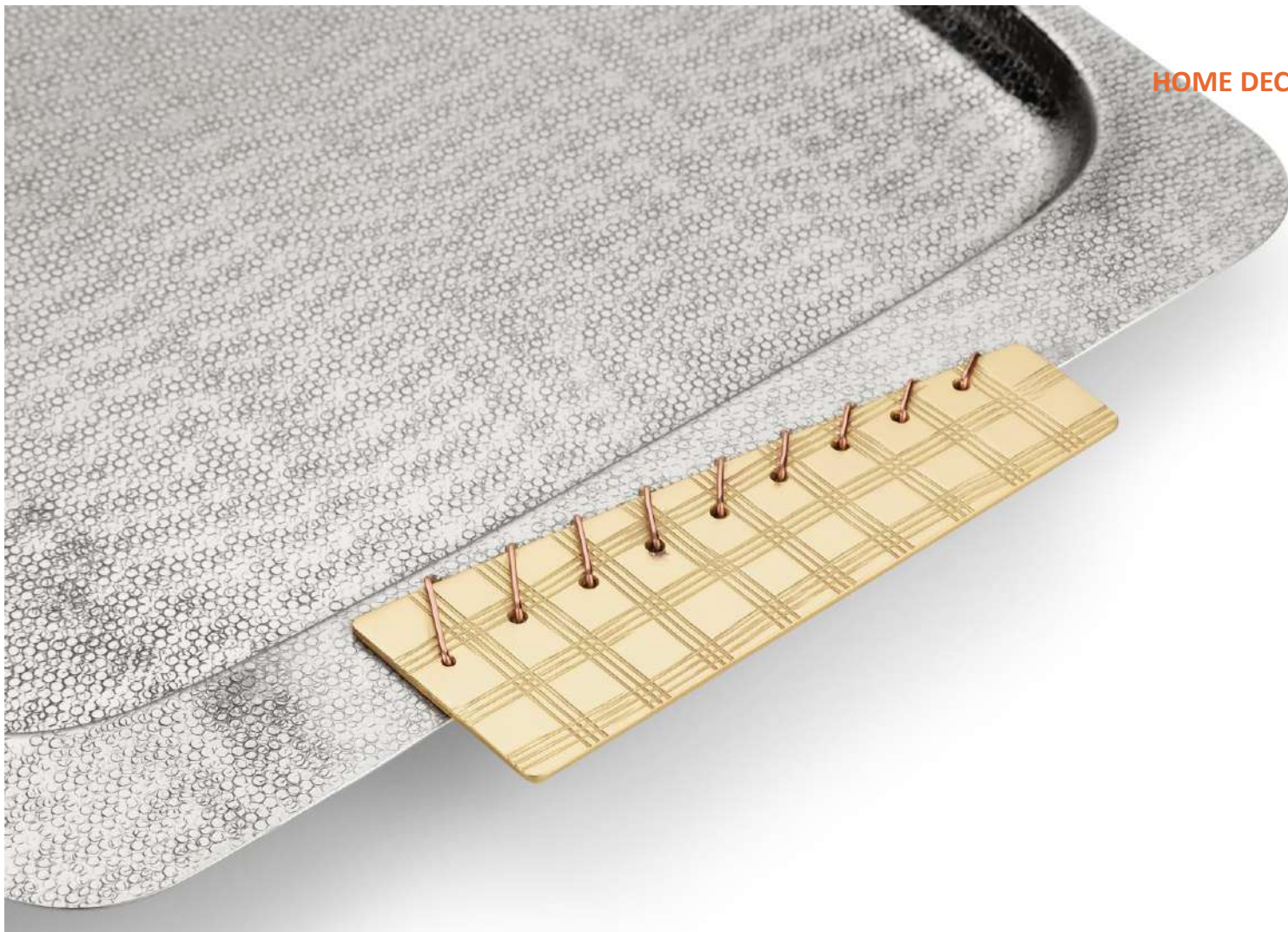
Trays

Boxes & vide-poche

Home garden

Accessories

Trays



^ **7030** rectangular tray MORIOKA - design Enrico Z
 white bronze, brass, copper - shiny, varnished
 texture Palline & Scozzese - 54 x 31

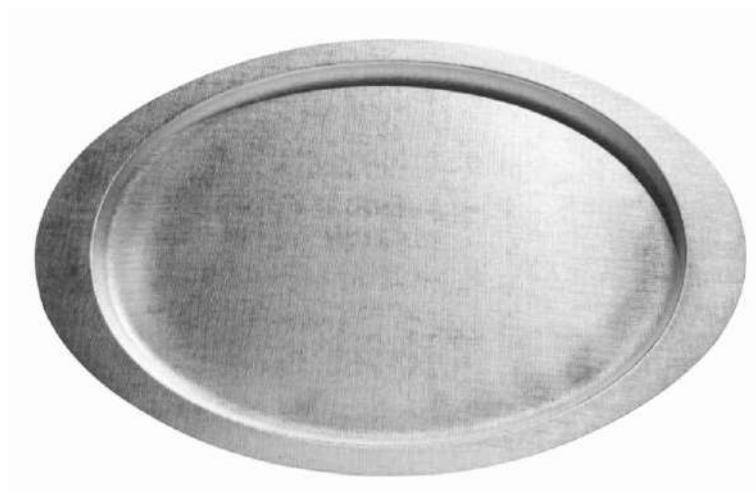


< V **7889** rectangular tray with handles - design Enrico Z
texture Canapa – light gold (varnished) - 41 (49) x 29

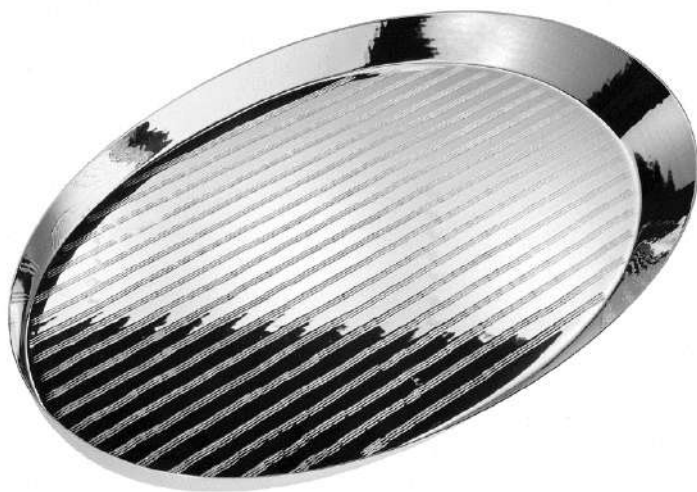


v > Rectangular tray **PATCH** - design Enrico Z
texture mosaico (sahara & palline) - 48x31
9789 satin silver plated (varnished)
9789B shiny brass (varnished)





^ oval tray **VELVET** - design Enrico Z
texture canapa - 53x34
9885 silver plated - **9885G** rosegold plated



^ **9510** oval tray **VIE** - design Enrico Z
texture vie – silver plated - 49x34 h 3



^ rectangular tray **UNO** - design Enrico Z
texture intreccio – silver plated
9288 / 9290 - 38x25 / 48x33



^ **9157** square plate **TANGO** - design E&B Z
texture rettangoli - plus plated - 32x32 h 3



^ **9156** rectangular plate **TANGO** – design E&B Z texture
rettangoli – plus plated - 43x18 h 3



^ rectangular tray **VANCOUVER** – design Enrico&Bernardo Z
texture Rettangoli – 64x11 - **9159B** satin brass (varnished)



^ square tray **VANCOUVER** - design Enrico&Bernardo Z
texture Rettangoli - 24x26
9158B satin brass (varnished)

v square tray **VANCOUVER**
design E&B Z - tex *rettangoli* -24x26
9158 silver pl. - **9158S** satin silver



> rectangular tray **VANCOUVER**
design E&B Z - tex *rettangoli* -64x11
9159 silver pl. - **9159S** satin silver



^ rectangular tray **TORONTO** - design Enrico Z
texture Aghi - 60x26 - **9575** silver plated



^ 9558 square tray **GAIA** - design Enrico Z
smooth & polished - 41x36 h 3 - silver plated



^ 9559 rectangular tray **GAIA** - design Enrico Z
smooth & polished - 52x37 h 3 - silver plated



^ 9390 rectangular tray **ISHRAM** - design Enrico Z
texture aghi - silver plated - 45x31



^ tray **MADRAS** - Design Enrico Z
 texture *aghi* - 50x35
9190 silver plated (varnished) - **9190B** light gold (varnished)
 Plane made of ebony Macassar wood



^ tray **TOGETHER** - design Enrico Z
 smooth&shiny - 39x39
9196 plus plated - **9196B** shiny light gold
 Zebrano wood plane



^ **9170** tray **CRETA** - design Enrico Z
 smooth - silver plated (varnished) - 56x35
 lacquered wood plane (red or black)

^ **9180** tray **ISI** - design Enrico Z
 smooth&shiny - 50x36 - plus plated
 Lacquered wood plane (red or black)



^ round tray **GALLERIA** – design E&B Z
0780 plus pl. – 1780 sterling silver - dm 33 h 5



^ 0786 oval tray **GALLERIA** – design E&B Z
plus plated - 50x35 h 5



^ round tray **BINARIO** - design Enrico Z
2180 plus plated



^ round tray **ITALIA** - silver plated
0278-0280 / dm 33 - 39



^ 0098 big tray **STADIO** - design Bernardo Z
smooth&polished – silver plated - 76x63



^ rectangular tray **ITALIA** - silver plated
0287-0288-0289-0290-0298
 35x24 – 40x28 – 45x32 – 50x36 – 54x40



^ rect. tray with handles **ITALIA** - silver plated
0288-1/0289-1/0290-1/0298-1
 40x28 – 45x32 – 50x36 – 54x40



^ oval tray **ITALIA** - silver plated
0285-0286
 49x35 – 54x40



^ oval tray with handles **ITALIA** - silver plated
0285-1 / 0286-1
 49x35 – 54x40



^ square tray **ITALIA** - silver plated
0296-0297 / 32x32 – 39x39



^ tray **AUTOSTRADA** - silver plated
0273 – 274 – 0275 39x19 – 48x24 – 64x32

Bowls & Centerpieces

The unmistakable lustre of silver (silver plated with varnish finishing), with its clear and soft reflections, is enhanced by the singular shape of this centrepiece. Circular in the centre a sphere rises from the rippled surface. Like a drop of water it seems to dance on the mirror base, crystallizing the dynamics of the action in a frame.

A hymn to 'life', to the element that allows perpetuation and to which the ancient cultures dedicate ritual dances. The past, present and future are concentrated in a single object.



▲ 9605 Centrepiece *BALLIAMO SUL MONDO*
Texture SAHARA & AGHI
Silver plated (varnished) - dm 31 h 24
design Enrico Z

I CUCITI (THE SEWING)

design Enrico Z

Vases and centrepieces of high craftsmanship, with details resembling precious darns, drawing the metal surface of these works of art, with limited numbering. The light reflects and refracts the colour of metals - copper, white bronze, brass - creating a visual and sensory play of rare suggestion.

But the beauty and novelty of the collection is connected to the particularity of being 'counter-current'.

Today technology is able to program the life cycle of a product, determining duration and end. You can't repair it, you throw it away and you buy it again. The idea of "repaired" is transgressive. It is a gesture motivated by love for the object and for what it represents in the personal imaginary. Not only this. This means respect for our Planet, for its resources and for the future of all. A 'repaired' object contains many experiences. Similarly the wrinkles on a face narrate the life of its protagonist. In Japan - a culture that is sensitive and attentive to daily aesthetics - repairing broken objects is an ancient art, rich in submissive beauty: it is *Kintsugi*.

The presence of a cut, of a chip, of a nick, becomes a new language able to enrich the aesthetic vocabulary of the object.

In the collection *I CUCITI* (THE SEWING) this play is represented in a masterly manner.

The repair itself becomes decoration, creativity, uniqueness.



SUSTAINABLE DESIGN

V 7015B / 7016B bowl AICHI
 Texture CORTECCIA & SCOZZESE
 brass, white bronze, copper
 dm 16 h 10 – dm 23 h 13



V 7015W / 7016W bowl FUKUI
 Texture PALLINE & RETTANGOLI
 white bronze, brass, copper
 dm 16 h 10 – dm 23 h 13





▲ 7025 plate & centerpiece KITAKAMI
white bronze, brass, copper - shiny, varnished
texture Palline & Corteccia - dm 42m

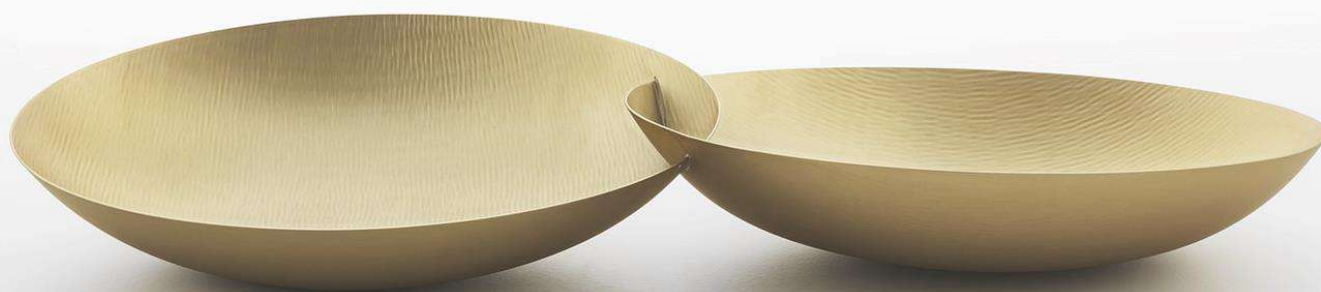
- v > Bowl INTUZIONI**
 design Enrico&Bernardo Z
 Texture AGHI - dm 30 h 14
9349 polished silver plated (varnished)
9349B satin brass (varnished)



- v bowl ELIS**
 Texture AGHI ORIZZONTALE - 64x20 h 10
 design Enrico Z
9548 silver plated (varnished)
9548B shiny brass (varnished)



- v Bowl DELLABBONDANZA**
 design Enrico Z - Texture AGHI - 53x19 h 8
9137 polished silver plated - **9137B** matt brass (varnished)
9137S satin silver (varnished)





^> **CANOA** - design Bernardo Z
texture AGHI - 42x10 h6 / 77x14 h8
9186 / 9188 silver plated
9186B / 9188B brass (beeswax coating)

ILLUSIONI (ILLUSIONS)

The warm materiality of the finely worked brass... the ripples as if a breath of wind were caressing the surface. The illusion is in creating that feeling of an already lived object, rooted in the memory of everyone. In ILLUSIONS, centrepiece cup, the simple and 'natural' shape is accompanied by textures that animate the surface, constantly giving it new life and identity, depending on the perspective of observation.



^> bowl **ILLUSIONI**
design Enrico Z
texture AGHI - 40x14 h 9
9130 silver plated
9130B bright brass (beeswax coating)



- ^ Bowl **TAMADA** - design Enrico&Bernardo Z
 texture SPINADIPESCE - dm 34 h 9
9049 silver plated (varnished)
9049B brass (beeswax coating)



- > Bowl **ATMO SFERE** - design Enrico Z
 texture *corteccia&fili* - dm 23 h 21
9198 silver plated/gilded inside
9198R platinum plated/gilded inside



- < Bowl **LEAF** - design Enrico&Bernardo Z
 texture CORTECCIA - 50x31 h 9
9736 silver plated (varnished)



- > Bowl **SUMATRA** - design Enrico&Bernardo Z
 texture *aghi* - 38x24 h 13
9140 silver plated - **19140** sterling silver



THE BURNISHING TECHNIQUE

A production method performed entirely by hand, it induces oxidation of the metal through the application of substances and heat to create unique decorative and colour effects. The object is then covered with a coat of beeswax, which provides lasting protection from alterations.



^ > 9052E bowl 56
Texture ROSANERO - Design ENRICO Z
Copper - varnished - dm 24 h10



< v 7106-7107-7108 Bowl FILICUDI
Bronze Noir - Texture TARTARUGA
design Bernardo Z
dm 9 h 5 - dm 11 h 6 - dm 13 h 7

THE CHARM OF TIME

This Zanetto burnishing technique uses natural elements and the secret expertise of the craftsmen on the surface of the object in order to accelerate the signs of time. A deliberate choice to allow the metal to tell its own story, a unique evidence of the power of nature.





^ Oval bowl **NOCE** – design Enrico Z
texture FILI - silver plated
9724 12x9 – **9725** 18x13 – **9726** 24x17



^ Oval bowl **NOCE** - brass – design Enrico Z
texture FILI – burnished out.(beeswax coating)
9724D 12x9 – **9725D** 18x13 - **9726D** 24x17



^ bowl **OVO** – design Bernardo Z
texture CORTECCIA - 19x14 h 8
9125 Silver plated - **19125** sterling silver



^ bowl **OVO** – design Bernardo Z
texture CORTECCIA - 19x14 h 8
9125D burnished brass



^ bowl **MAGNOLIA** – design Enrico Z
texture CORTECCIA - 29x17 h 9
9127 silver pl. – **19127** sterling silver



^ bowl **CHIDERA** - design Enrico Z
texture CORTECCIA - 39x25 h 12
9129 silver plated – **9129D** burnished brass
19129 sterling silver



^ 9132 bowl **LIFE** - design Enrico Z
texture *CORTECCIA* - dm 26 h 12
Silver plated



^ 9132D bowl **LIFE** - design Enrico Z
texture *FILI* - dm 26 h 12
Burnished brass



^ 9076 bowl **VELA** - design Enrico Z
texture *CORTECCIA* - dm 22 h 15
Silver plated



^ 9076D bowl **VELA** - design Enrico Z
texture *FILI* - dm 22 h 15
Burnished brass



^ bowl **SATURNO** – design Enrico Z
texture *AGHI* - dm 14 h 8 / dm 21 h 11
9346/9347 silver plated



^ bowl **NIGER** - design Bernardo Z
texture *CORTECCIA* - dm 28 h 14
9088 silver pl. – 9088D bur.brass

Vases





< Vase **ROSANERO** - design E & B Z
texture *Rosanero* - varnished copper
9028E h 30 dm 8 – 9029E h 37 dm 10



^ > Vase **SNELLO** - design Enrico Z
texture *Rosanero* - varnished copper
9030E h 29 dm 21





> Bud vase **MEXICO** - design Enrico Z
plus plated - texture Aghi
9536 h 12 dm 6

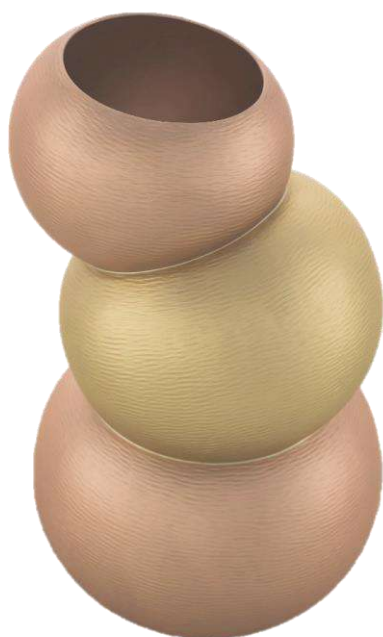


^ vase **MEXICO** - design Enrico Z
plus plated - texture Aghi
9539 h 22 dm 15 / 9540 h 26 dm 15



^ > vase **TAMADA** - design Bernardo Z
texture *spinadipesce* - h 38
9050 silver plated (varnished)
9050B brass (beeswax coating)





< ^ 7013 vase EQUILIBRI
 design Enrico Z - h 29 dm 16
 texture *aghi* - copper & brass (varnished)



^ > vase EGREGORA - design Enrico Z
 Texture *acqua* - h 20 dm 20 / h 30 dm 30
 9639/9640 silver plated (varnished)
 9639T/9640T titanium plated (varnished)





^ vase **VELA** - design Enrico Z
Texture *corteccia* - h 38 dm 13
9074 silver plated



^ vase **LIFE** - design Enrico Z
Texture *corteccia* - h 33 dm 13
9133 silver plated - **9133D** burnished brass



^ vase **ORPHEUS** - design Enrico Z
Texture *canapa* - h 37 dm 16
9143 silver plated



^ vase **DUNE** - design Bernardo Z
Texture *canapa* - h 30 dm 9 - h 36 dm 10
9028/9029 silver pl. - **9028B/9029B** satin brass



^ vase **MALINDI** - design Bernardo Z
Texture *spirali* - h 38 dm 14
9093 silver plated - **9093B** light gold



^ vase **AGADIR** - design Bernardo Z
Texture *spirali* - h 12 dm 20
9024 silver plated



> **9743** Wall vase **PALLA** - design Enrico Z
Texture *acqua* - h 28 dm 15
Burnished copper (varnished)

Candelabras & Votives





< ^ 9678 Candelabra **CORALLO PICCOLO** - design Enrico Z
Texture aghi - light gold (varnished)
7 elements - base 17x20 - variable height



^ 9679 Candelabra **CORALLO GRANDE** - design Enrico Z
Texture aghi - light gold (varnished)
21 elements - base 40 x 20 - variable height



< candlestick **LIPARI** - design Enrico Z
 Texture *acqua* - 34 x 10 h 16
9426 silver plated & cold enamels
9426B matt & shiny light gold (varnished)
on picture: 2 products



> **9178** candelabra 5 lights **SOSPIRI**
 texture *Aghi* - h 26 35 x 9 silver plated (varnished)
 design Enrico Z



^ > candelabra MADURAI K - design Enrico Z
 6 lights - h 48 dm 33 - texture Aghi, shiny
 09686 silver plated - varnished
 19686 sterling silver - gr. 1.750



^ candelabra 3 l. SOFFIO – design Enrico Z
 texture *aghi* - h 33 w. 33
 9373 silver plated – 19373 sterling silver

^ candelabra 5 l. SOFFIO – design Enrico Z texture
aghi - h 33 w. 33
 9375 silver plated – 19375 sterling silver



- ^v 7026B** candles
holder KIUSHU 1
brass, white bronze,
copper - matt & shiny,
varnished - texture
Corteccia - h 12 dm 10
- ^v 7026W** candles
holder KIUSHU 2
white bronze, brass,
copper - matt & shiny,
varnished - texture
Palline - h 12 dm 10

design Enrico Z



- <v 7029W** candlestick
AICHITO 2
white bronze, brass,
copper - shiny, varnished
texture Palline - h 43 dm
10

- <v 7029B** candlestick
AICHITO 1
brass, white bronze,
copper - shiny, varnished
texture Palline - h 43 dm
10

design Enrico Z





A slender body, slim, almost aerial to the point of seeing the warm heart of fire soaring in the void. The two slender columns that support the flame differentiate themselves in a play of full and empty, of open and closed. In one the metal is folded in on itself creating a slender pipe, in the other the metal opens into a hemispheric section. Reflections, glints and lights chase each other in a magical sequence, dancing with the motion of the flame.

< **9659** candlestick **DISCLOSURE**
 design Enrico Z
 texture AGHI - h 50 dm 18
 silver plated (varnished)







▲ Candlestick-vase **MADURAI NANO**
Design Enrico Z
texture *aghi* - h 13 dm 11
9646 silver plated - 9646D burnished brass



▲ Candlestick-vase **MADURAI** – design E Z
Text. *Aghi* - h 25 dm13/h 35 dm15/ h 45 dm15
9647/9648/9649 silver plated (varnished)
19647/19648/19649 sterling silver



▼ Candlestick-vase **MADURAI** – design E Z
Text. *Aghi* - h 25 dm13/h 35 dm15/h 45 dm15
9647D/9648D/9649D burnished brass





^ candlestick **VORTICE** - design Enrico Z
Silver plated - smooth
9652 4x4 h 8 – 9653 5x5 h 11 -9654 6x6 h 7



^ candlestick **45** - design Enrico Z
smooth - 6x6 h 7 - 6x6 h 18
9608/9609 silver plated - 9608T/9609T titanium plated



^ candlestick **DOPPIOVORTICE** – design EZ
h 27 6x6
9655 silver plated



^ 9619 candlestick **TERREMOTO** - design Enrico Z
smooth - light gold (varnished) - h 15 7x4



^ candlestick **LIGHT DIAMOND** - design Enrico Z
texture Bucci - h 9 7x5
6351C copper - 6351T titanium plated



^ candlestick **EASY45** - design Enrico Z
smooth - 6x6 h 7
6308A silver plated - 6308B light gold



^ votive **VELA** - design Enrico Z
texture Fili - 11x9 h 5
9641 silver plated - 9641D burnished brass



Ambiance Perfumers

▼ **ambiance performer MARCELITO**
 texture Canapa, shiny & matt - design Enrico Z
 Titanium plated & gold plated - 09631T h 11 dm 11



▼ **ambiance performer MARCELO**
 design Enrico Z
 texture Canapa - h 11 dm 11
 9631 silver plated - 9631B brass



▲ **ambiance performer CICIARITO**
 design Enrico Z
 texture Canapa - h 11 dm 10
 9632 silver plated - 9632B brass

▲ **ambiance performer MANUELA**
 design Enrico Z
 texture Canapa - h 11 dm 11
 9633 silver plated - 9633B brass



> **incense burner BOMU**
 design Enrico Z
 texture Spinadipesce - l. 29
 9007 silver plated - 9007B brass

Picture frames

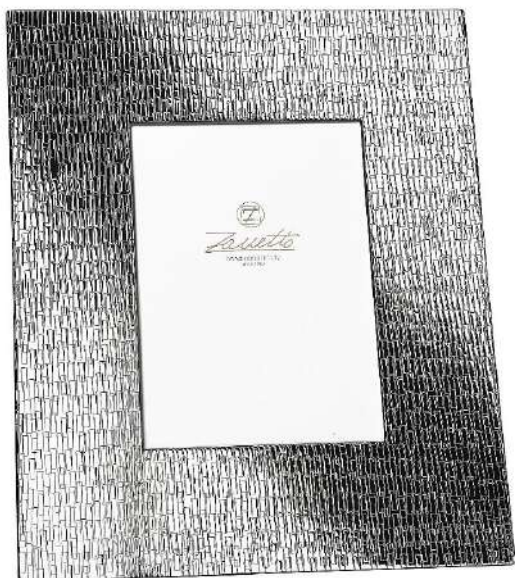


- ^ > Picture frame **UP 1 & UP 3** – design Enrico Z
 Texture *acqua* - pic. 9x9 – 9x13 – 13x18
UP1 = 9706 – 9708 - 9709 shiny silver plated (varnished)
UP3 = 9706C – 9708C – 9709C copper (varnished)
 Zebrano wood - sits both horizontally or vertically



- ^ Picture frame **UP 2** - design Enrico Z
 Texture *canapa* - pic. 9x9 – 9x13 – 13x18
9706S - 9708S - 9709S matt silver plated (varnished)
 Zebrano wood - Sits both horizontally or vertically

- > picture frame **NUVOLE**
design Enrico Z
pic. 9x9 – 9x13 – 13x18
9712-9713-9714 silver plated
9712B-9713B-9714B matt brass

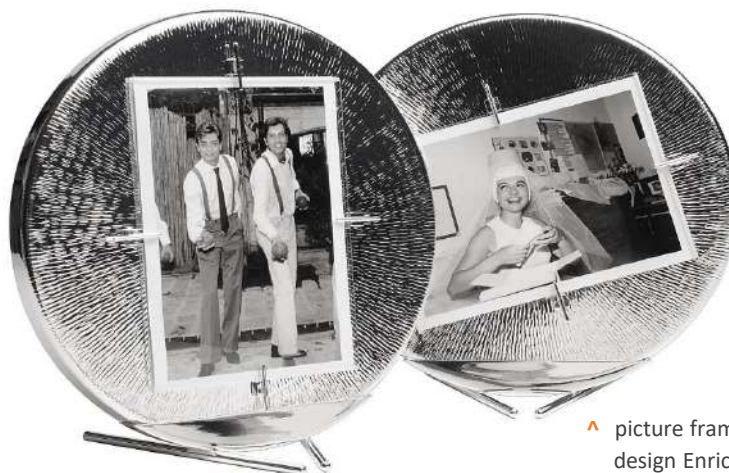


- < picture frame **INTRECCI**
design Enrico Z
pic. 9x9 – 9x13 – 13x18
9712A-9713A-9714A silver plated
9712AB-9713AB-9714AB matt brass

- > picture frame **VIE**
design Enrico Z
pic. 9x9 – 9x13 – 13x18
9716-9718-9719 silver plated



- > Picture frame **FRATES** - design Enrico Z
 Texture *aghi* - Silver plated (varnished)
9306-9307-9309 - pic. 9x9 – 9x13 – 13x18

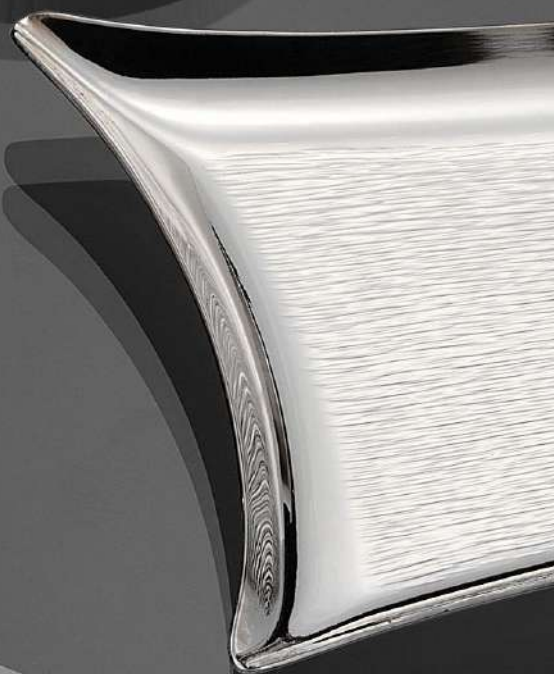


- ▲ picture frame **STELLA**
 design Enrico Z
 texture *aghi raggiera* – silver plated (varnished)
9750 - dm 26 - pic. 13x18

- > picture frame **R&B**
 design Enrico Z
 texture *aghi* - 33x10 h15
 pic. 13x18
9109 silver plated (varnished)



Desk



**OBLIO square plate**

With its essential square shape, occupies the main surface space of a table or a piece of furniture. Divided into oblique by two contiguous workings it is the exaltation of the artisan skills of Zanetto in the 'hammer' processing of metals that perfectly create new surfaces unique in beauty and innovation. Singular and unrepeatable objects are created where each 'touch' is a signature of artistic expertise and wisdom.

^> 9255 square plate **OBLIO**
design Enrico Z - silver plated
Tex. Rettangoli&Sahara – 181x18



^> paper knife **MACHOMAN**
design Enrico Z - texture Aghi - l. 27 dm 2
06330D burn. brass - **06330T** silver pl. & titanium pl.



^< magnifying glass **MACHOMAN**
design Enrico Z - texture Aghi - l. 20 dm 2
06332D burn. brass - **06332T** silver pl. & titanium pl.



^ **9173** tray **PASSIONI** – design B&E Z
texture aghi – plus pl. – 21x13



^ paper knife **PASSIONI** – design EZ
texture aghi – l. 22
9172 plus pl. – 19172 sterling silver



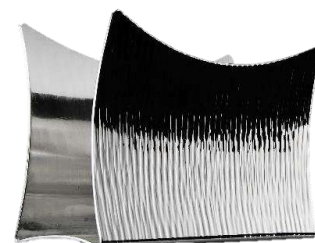
^ **9175** pencil stand **PASSIONI** design B&E Z
texture aghi – plus pl. – h10 9x6



^ **9174** ash-tray **PASSIONI** – design B&E Z
texture Aghi – plus plated – dm 15 h 4



^ **9174-2T** ash-tray **MINIPASSIONI** – design B&E Z
texture Aghi – titanium plated – dm 11 h 3



^ **9171** visit cards holder **PASSIONI**
design B&E Z
texture aghi – plus pl. – h5 9x4

Boxes & Vide-poche





> ^ box **PIANETA DELLE SORPRESE** - design Enrico Z
 texture CANAPA - h 21 - varnished
 9610 silver plated - 9610G gold plated



^ > **SMALL PORCINO** - design Enrico Z - burnished brass - dm 8 h 9
 9003-I texture AGHI - 9003-II texture *PALLINE*



^ < **BIG PORCINO** - design Enrico Z - burnished brass - dm 8 h 11
 9004-I texture AGHI - 9004-II texture *PALLINE*



^ secrets box **BIPOP** - design Enrico Z
texture Aghi, shiny - 16x10 h 10
06302 silver plated, gilded inside
16302 Sterling silver, gilded inside – gr 760

^ secrets box **DROP** - design Enrico Z
texture Aghi, shiny - 16x10 h 11
06301 silver plated, gilded inside
16301 Sterling silver, gilded inside



^ box **MARADI** - design Enrico Z
Texture SPIRALI - dm 18 h 10 - **9010** silver plated



^ small box **GOLD DOME** - design Enrico&Giulia Z
texture AGHI – dm 10 h 8 - **6303B** light gold

FIRENZE

collection

ROUND AND RECTANGULAR VIDE POCHES
Choose between our precious materials: brass,
burnished bronze, copper and silver.
Then choose from 4 colored removable internal
pad to make the perfect match.



^ **9674F** round vide poche FIRENZE - design Enrico&Giulia Z
bronze noir - matt , varnished - texture Tartaruga - dm 18 h 3



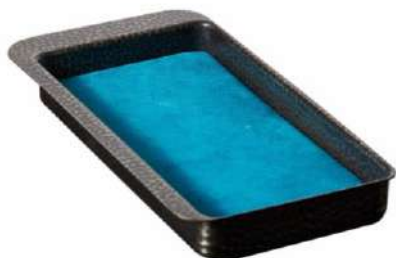
^ **9674C** round vide poche FIRENZE - design Enrico&Giulia Z
copper - matt , varnished - texture Acqua - dm 18 h 3



^ **9674A** round vide poche FIRENZE - design Enrico&Giulia Z
silver plated - shiny, varnished - texture Aghi - dm 18 h 3



^ **9674B** round vide poche FIRENZE - design Enrico&Giulia Z
Brass - matt, varnished - texture Cortecchia - dm 18 h 3



^ **9675F** rect. vide poche FIRENZE - design Enrico&Giulia Z
bronze noir - matt varnished - texture Tartaruga – 24x12 h 3



^ **9675A** rect.vide poche FIRENZE - design Enrico&Giulia Z
Silver pl. - shiny, varnished - texture Acqua – 24x12 h 3



^ **9675C** rect.vide poche FIRENZE - design Enrico&Giulia Z
copper - shiny, varnished - texture Aghi - 24x12 h 3



^ **9675B** rect. vide poche FIRENZE - design Enrico&Giulia Z
Brass - matt, varnished - texture Cortecchia - 24x12 h 3

INNER PAD : cream 8 - light blue 5 - dark blue 2 - pink 10



Home Garden



^ **DAVANZALE** windowsill cachepot
design Enrico Z
texture AGHI - 46x18 h12
9020 shiny brass (varnished)



^ **COCCIO** cachepot
design Enrico Z
texture AGHI - dm 14 h12
9014 shiny brass (varnished)



> **CICCIO** watering can
design Enrico Z
texture AGHI - dm 14 h16
9012 shiny brass





^ bowl/cachepot **COCCODORO** – design B Z
brass – 9018B / 9019B - dm16 h13 / dm18 h15



^ bowl/cachepot **COCCOROSSO** – design B Z
copper – 9018C / 9019C - dm16 h13 / dm18 h15



^ bowl/cachepot **COCCO** - design B Z
Silver plated - 9016 – 9017 – 9018 – 9019
dm12 h9 – dm14 h11 - dm16 h13 - dm18 h 15



^ 5005 cachepot **MARIA** - design Bernardo Z
titanium plated - dm 40 h 24

Accessories



- > bookend **TRIP** - design EnricoZ
texture AGHI - 16x16x16
5040 plus plated (no tarnish)
5040B brass (varnished)



- < **5101** Mirror **EXAGONO**
design Enrico Z
47x30 h 4 - varnished silver plated



- > kleenex box **DINO** - design E&B Z
texture AGHI - 24x13 h 8
9179 matt silver plated - **9179P** plus plated
- > kleenex box **SIMPLICIO** - design E&B Z
without metal bottom - texture AGHI - 24x13 h 8
9169 silver pl. - **9179B** light gold






^ big vase/umbrella stand **TAMADA** – design BZ
Texture SPINADIPESCE - h66 dm25
9051 varnished silver plated - **9051B** varnished brass



^ umbrella stand **DOMO** – design EZ
25x25 h60 – **5020** plus pl. – **5020B** varnished brass



^ big bowl–magazine holder **DOMO** - design BZ
texture *tartaruga* - 46x29 h15
7102 bronze noir (varnished)



Zanetto is exploring a new design horizon. The art of forging and the craftsmanship of metals, in which it has absolute mastery, and becomes the fil rouge through which to design the everyday furnishing elements: tables, chairs, bookcases, lamps. An elegant and contemporary creativity prevails, a play on geometries, symmetries and balances between fullness and emptiness.

New design horizon

LIVING EXTRA





TAPPO

When irony is combined with usefulness and plays with reflections. A small table - but also a stool - is proposed in the form of a sparkling wine cork. It is reminiscent of the experimentation of Pop Art and Italian Design of the 1960s.

Tappo represent the playful part of all of us while not neglecting usefulness, therefore so many possibilities in an object. Creativity in design and skilled craftsmanship on the surface of each one, the ability to combine different finishes without the fear of adding a non-metal such as velvet.

pouf, small table, box TAPPO

design NOII - dm 35 h 45

5230 A shiny silver plated

5230 B shiny brass

5230 C shiny copper
Varnished





stool TAPPO
design NOII - dm 38 h 81
5232 A shiny silver plated
5232 B shiny brass
5232 C shiny copper
varnished

armchair DREAM
 design NOII – 76x70 h 70
5240B shiny brass
5240C shiny copper
 varnished





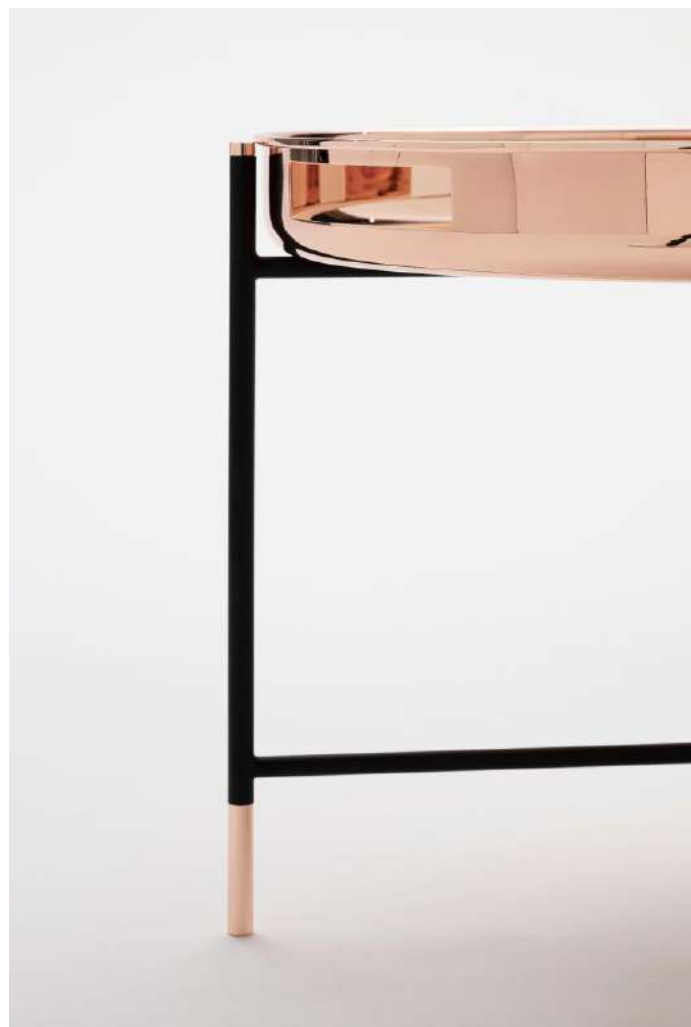
DUO

allows us to think about these coffee tables as "not lazy" ... because the planes rise from the base becoming independent trays.

Round in shape, are they tables or trays?
Both. They combine two functions: serving and being a support for everyday objects.... a glass, a pen, a book. The beauty lies in the simplicity of the idea, and in the precious shine and metal working of the surfaces.

Side table DUO – design NOOII

tall: dm 35 h 50 - **5210B** brass - **5210C** copper - **5210S** silver plated
low: dm 50 h 40 - **5211B** brass - **5211C** copper - **5211S** silver plated
varnished





Side table with tray MADURAI

Design Enrico Z

Silver, copper and mirror - texture Aghi

5206 - dm 50 h 70



INFINITO

HOME DECOR

A unique 'creative' thread that links usefulness to beauty. But that, above all, focuses on the continuous pursuit of harmony.

table **INFINITO** – design NOOII

5201B shiny brass, glass dm 120 h 72

5202S satin silver, glass dm 140 h 72





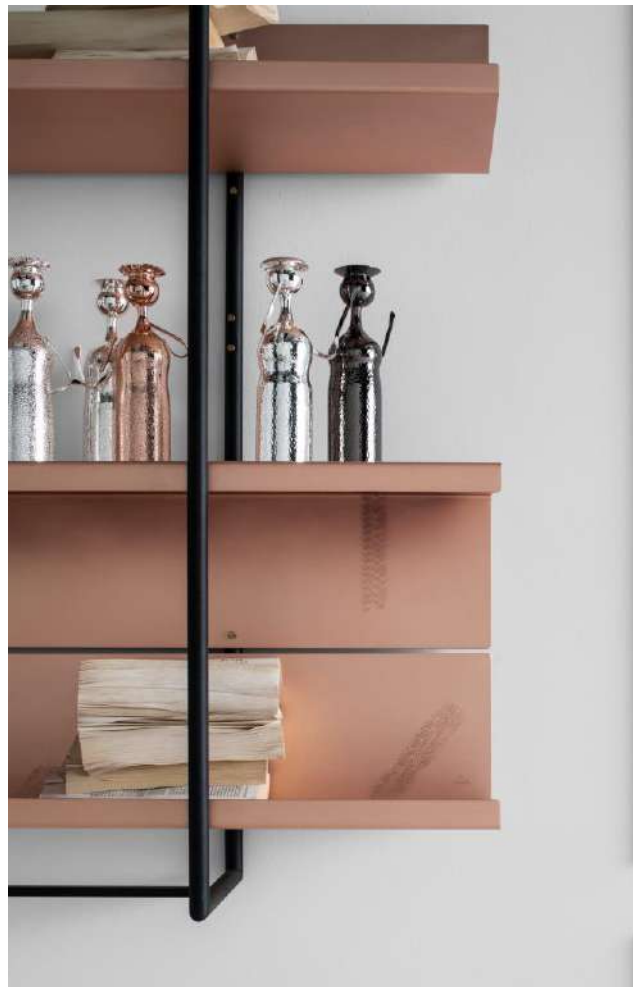
▲ **Console MADURAI**
Design Enrico Z & NOOII
Shiny copper, glass
5203 - 150 x 63 h 75

▼ **plian ICS**
design Enrico Z - 42x35 h 63
5010 plus plated
5010B shiny brass



< **giant vase / candleholder / stand MADURAI**
design ENRICO Z
low: dm 39 h 102
5048B brass
5048T titanium plated
tall: dm 39 h 124
5049B brass
5049T titanium plated





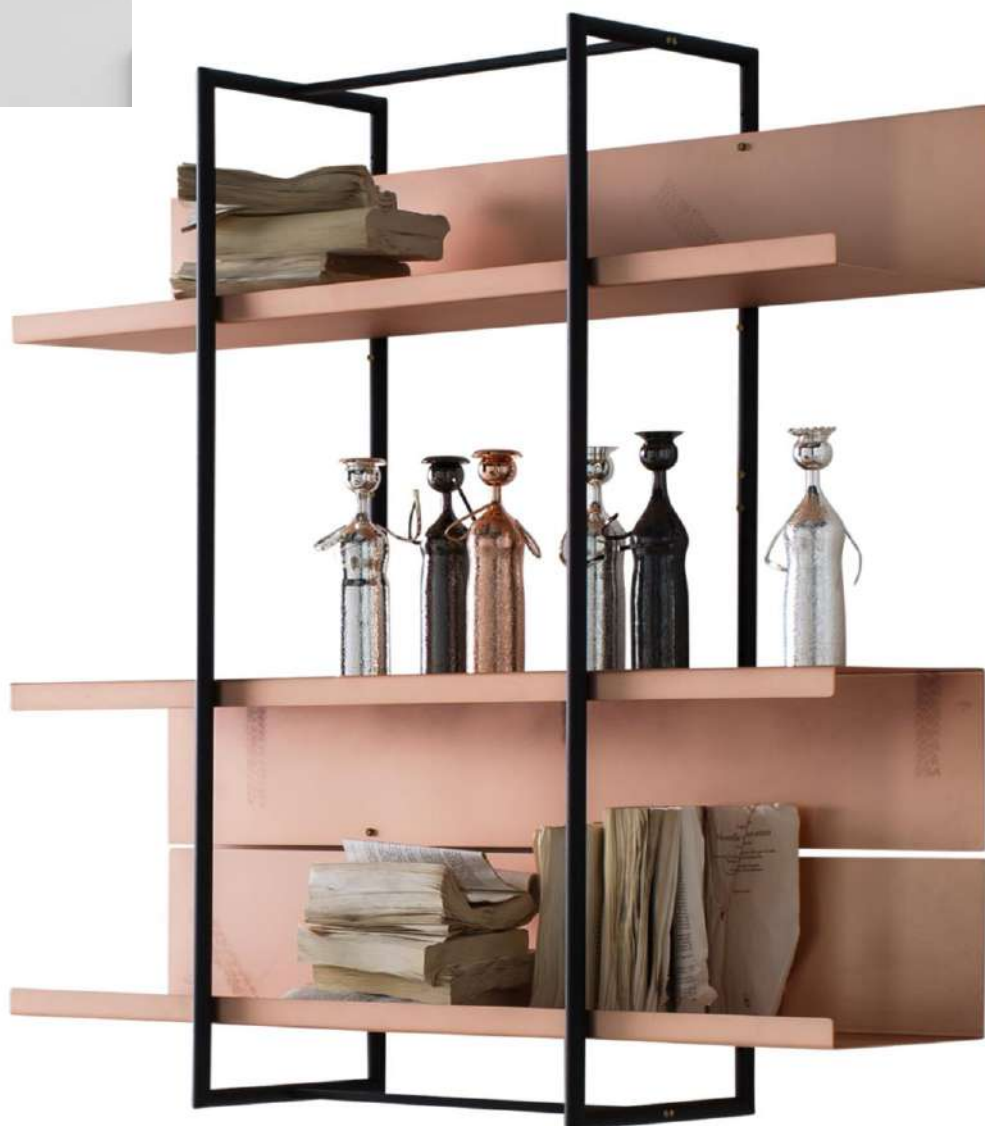
BOOKCASE U

it is with U
that we have tried to
communicate the
versatility and the
infinite possibilities
that Zanetto can offer
by working the metal.
Planes combined with
structures that contain
books, objects and an
infinity of other items.
Perfectly adaptable to
modern and luxurious
contexts. Each shelf has
a different handmade
"beating", the
distinctive sign of
actual and pulsating
craftsmanship



HOME DECOR

Bookcase U
design NOII
110x110x30
5270A silver plated
5270C copper





hanging lamp CUCITI

design NOII

Small: h 13 dm 14

5427C copper

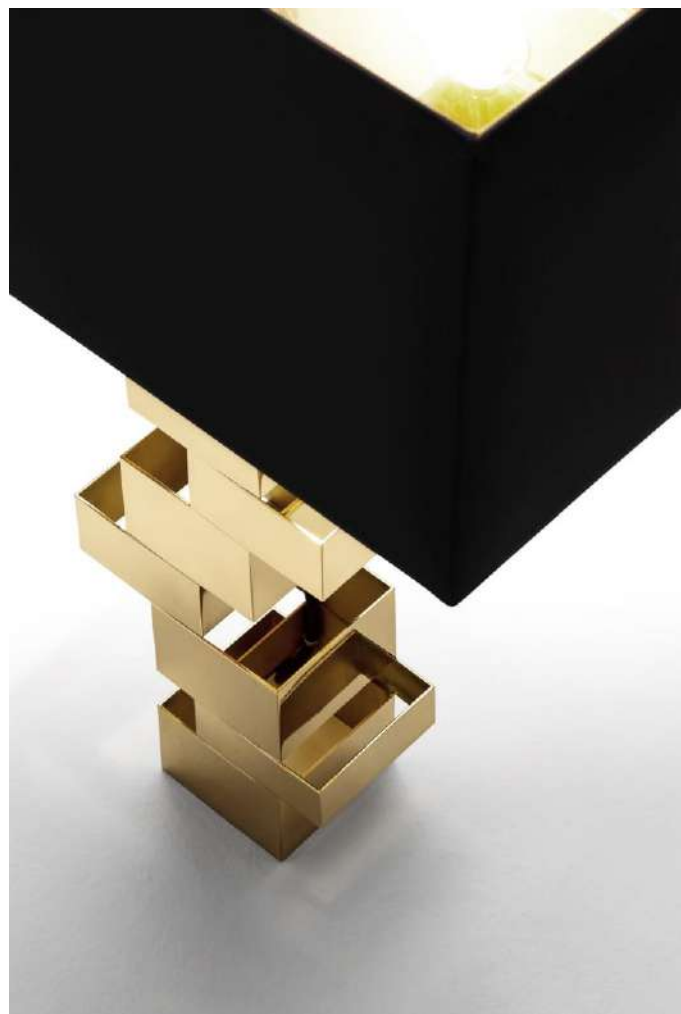
5427W white bronze

Big: h 26 dm 21

5428C copper

5428W white bronze





^ Table lamp **TERREMOTO**
design Enrico Z
h 65 40 x 25
5404 brass



< v Giant vase **TAMADA**
design Enrico & Bernardo Z
dm 37 h 97
5022B brass - **5022P** plus plated





GIFTS

Jewels & Gifts

Giving must involve "making time", cultivating the pleasure of looking for something special and unique. It means taking care of our soul and it is an exercise of sensitivity that drives us to perceive from the glances, the words and the expressions of others the silent desire for beauty.

The context of the gift is important and whether it is intended to embellish a house, a table or a person.

There are those who love Art and those who love objects that give personality and style to conviviality and good living.

The inevitable choice is towards productions that are characterised by mastery, executive quality, preciousness of materials and creative uniqueness. In a word... Zanetto.



JEWELS

new way:
to bring new Beauty on the bodies.
The Beauty as performed by Zanetto,
with its vibrating lights,
its unusual curves,
its language of textures.
To catch the light, breaking up
and returning it multiplied.
The magic of making
with skilled hands:
unique and unmatched.
Like each human being.



Ask our offices for the
catalogue

GIFTS



- > **PICCOLOUOMO** vase
 h 24 dm 6
 texture MIX - varnished
9900A silver plated
9900C copper
9900T titanium plated
 Design Enrico & Paolo Z



- ^ **PICCOLOUOMO CONCAPPELLO**
 vase & candlestick - h 25 dm 6
 texture MIX - varnished
9901A silver plated
9901C copper
9901T titanium plated
 Design Enrico & Paolo Z

PICCOLOUOMO If it is true that man is made of the same material as the stars ... it is not difficult to understand which is the fantastic story enclosed in the "Piccolo Uomo" collection, designed by Enrico Zanetto and created by his son Paolo, the third generation who joined the company. A series of vases and chandeliers of iridescent beauty, where metal becomes a mirror of refractions and flashes in space. Light that is the signal of the universe, which reaches and communicates to us as far as billions of years, distances impossible to imagine but not for this less real. Little Men of Light. Stars where emotions are drawn on the surface. With subtle, subtle spelling, which gives us the earthly dimension of existences made up of needs and sensations. Everyday life can and must consist of fragments that unite infinity to time. The beauty of the soul of the beholder.





^< **6370** spinning top **FELICITA'**
design Enrico Z - dm 8 h 8
texture BUCCIA - plus plated



<^ visit cards holder **DROP** - design Enrico Z
t. PALLINE, CORTECCIA, SPIRALI - 9x6x1
6310 platinum plated
6310S satin silver plated (varnished)



^> paper knife **MACHOMAN**
design Enrico Z - texture Aghi - l. 27 dm 2
06330D burn. brass - **06330T** silver pl. & titanium pl.

^< magnifying glass **MACHOMAN**
design Enrico Z - texture Aghi - l. 20 dm 2
06332D burn. brass - **06332T** silver pl. & titanium pl.



6322 stopper BOTTO
design Enrico Z - h 6 dm 4
texture Buccia, shiny - silver plated



6320 stopper SALVAFRIZZ
design Enrico Z - 11 x 3
texture BUCCIA - platinum plated





^ **9260 DUO BARMAN** shaker & mixer
Design Enrico Z - h 23 / h 29
texture CRTECCIA & AGHI
gold plated



^ liquor flask **CICCHETTO**
Design Enrico Z
texture Aghi, shiny - 13x6,5x3.5 ml 200
00063 silver plated - **01063** sterling silver gr. 200



▲ **9617 tumbler MEMORIA** - design Enrico Z
texture AGHI VERTICALE & ORIZZONTALE
silver plated - dm 8 h 10
5 words engraved



TUMBLER MEMORIA Water is the key resource for all forms of life on our planet, its quality and integrity are essential to their survival. Silver has many virtues, among which stand out the antimicrobial properties: it has the capability to destroy infections caused by microorganisms as bacteria, viruses, algae and fungi. Hippocrates, the father of modern medicine, wrote that silver had beneficial healing and prevention of disease; the Phoenicians used to put water and wine into silver bottles to prevent contamination. Silver, therefore, cleans and revitalizes the water.

Masaru Emoto,
Japanese scientist (1943-2014),
after extensive studies, research and experiments, discovered that the water possess a Memory and changes the structure of its crystals depending on the words and thoughts that receives: a sort of magnetic tape capable to record in very sensitive way the energy information that it receives from the environment. The water treated with positive words forms harmonious crystals, hundreds of photographs show them and has been demonstrated that the water so transformed possess therapeutic and curative effects for our health. We have therefore been willing to engrave the inside of tumbler with the beautiful words: **thank you love peace sharing union** The new tumbler, thus combines the good properties of silver together with those of positive thoughts, revitalizes and transmutes the skills of water, leading, to the simple act of drinking, a new therapeutic capacity and new awareness.



^ baby cup **CAPRI** - design Enrico Z
texture ACQUA - dm 6,5 h 7
9416-2 s silver plated & cold enamels
light blue - pink - grey



^ egg cup **BIBO** - design Enrico Z
texture PALLINE - dm 5 h 5 - l. 7
silver plated & copper
9101 egg cup
9101-2 egg cup with spoon

CAPRI babycup Beauty in education is important. It teaches respect and love for harmony. Fundamental qualities to address the great commitment that every young person is faced with. So why not think of them also, of their ability to perceive colours and shapes? These are the CAPRI glasses in rhodium plated metal and ACQUA texture designed for the hands of children. Not only to drink but also to play with the reflections of silver, to look at themselves and to feel the fine and pleasant surface beneath their fingers. Finally the colours, in delicate and refined shades: pink, blue and grey.



When creativity challenges a material's limits, the most astonishing creations arise.

Novel interpretations of the most noble metals, unusual and innovative endeavors, these are the COLLECTIBLE DESIGN.

Precious objects and numbered editions, with revolutionary designs that push workmanship beyond traditional limits to achieve aesthetic results that can enhance and lend great character to any setting.

COLLECTIBLE DESIGN





▲ candelabra **845**
Smooth & shiny - 8 lights - h 31 dm 27
design Enrico Z - numbered work
9607 silver plated





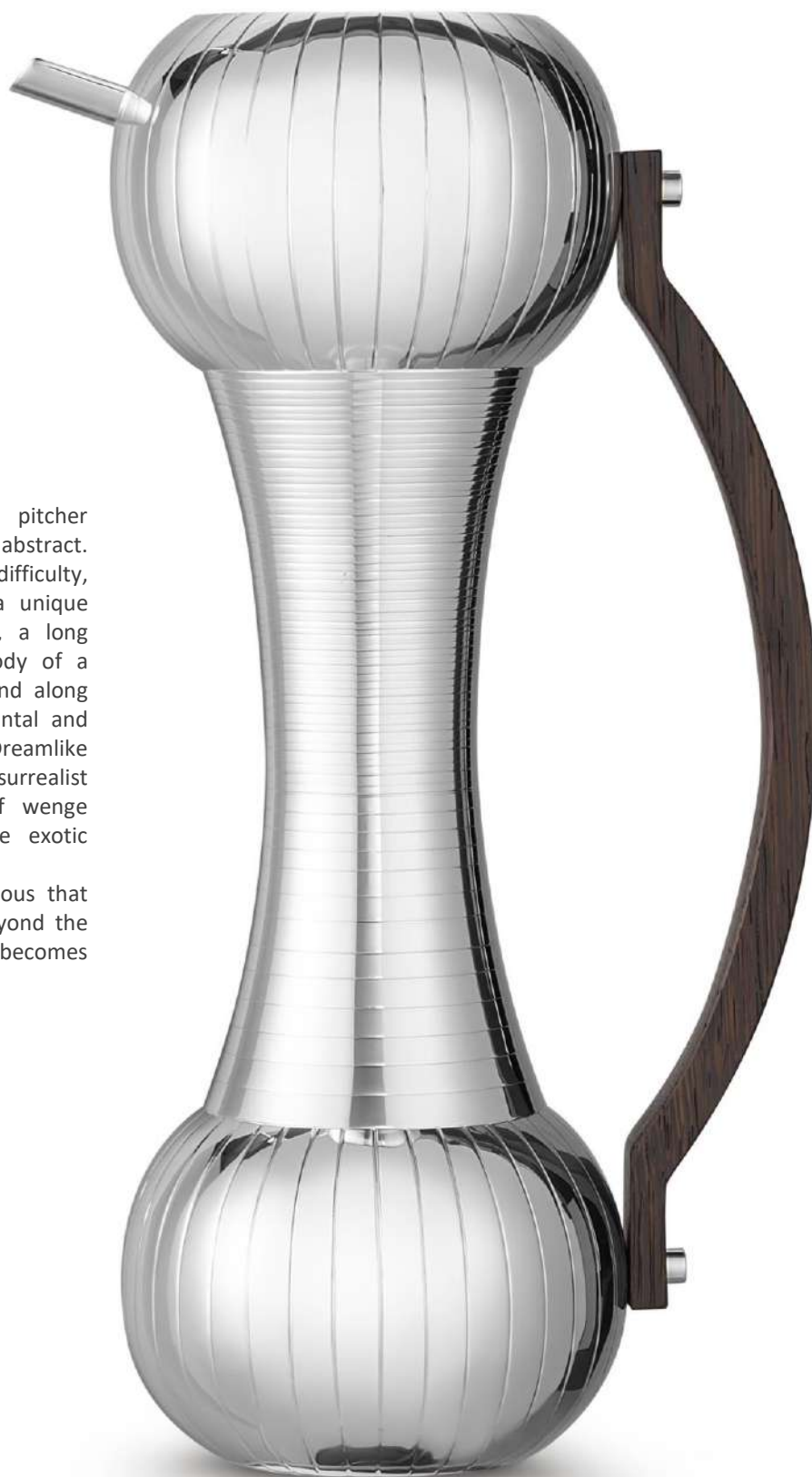
FLOREM Inspired by blossoming flowers, a reference to nature and its beauty. The dynamic lines, the energy of their movement and the duality given by the surface treatment reveal a unique character of the vase, ideated by Riccardo Erata. The complexity given by exception, the movement imprinted by the folding and bending surfaces are expressing the power of flowering. A precise condition representing the re-birth of life, marking the innate need of growth. This celebratory work releases its energy thanks to its unique form, its sparkling and textured surfaces expertly shaped by Zanetto artisans.



^ > **7035 vase FLOREM**

design Riccardo Erata - numbered work
Texture Fili - h 44 dm 40
brass & burnished brass

CACATOO PITCHER The pitcher becomes art, art becomes abstract. In a work of technical difficulty, shapes and lines create a unique play of volumes. A beak, a long tapered crest and the body of a cockatoo are lost and found along the high-hammered horizontal and vertical lines of this piece. Dreamlike combinations and surrealist references, the choice of wenge wood, whose veins evoke exotic landscapes. A journey of the unconscious that gives access to what is beyond the visible. Functionality becomes surreality.



^ **pitcher CACATOO**

design Enrico Z - numbered work -
hand engraving, shiny - h 40 dm 16 (24)
7017 Silver plated - **7017G** gold plated



▲ vase LUMACA

design Enrico Z - numbered work
shiny - h 43 29 x 24

7033 Texture Vie, gold plated

7033W white bronze and copper

LUMACA VASE The Lumaca vase is a reference to Futurism. A meeting of concepts that intersect in one: dynamism. A play of shapes and lights, the warm reflections of gold mirror the surroundings but maintain their primary identity thanks to the 'vie' hammering that traces the primordial design, outlining the concept around which this vase was conceived. The freedom to experiment with shapes, volumes, with the experience of the craftsmen who created this work; this freedom reflects the creative research of Enrico Zanetto. A continuous journey, an evolution that never loses its essence: shaping the material and giving it new life.



RHODOS AMPHORA VASE An ode to classical beauty, a reference to ancient Greece. The proud and clean lines, a symptom of grace, measure and proportion, meet the contemporary taste of the author, Enrico Zanetto. The harmony of timeless beauty is pursued on the levels of balance and symmetry, between all the parts and between each of them the whole figure, to then be softened by angular and moderate handles. The amphora, symbol of the body that houses the soul and grace, is the guardian of the essence of life and the synthesis of everything that exists in every cycle of life and its transformations. This celebratory work releases the multiplicity of its meanings, radiating with light thanks to its sparkling and precious gold-coloured surfaces expertly shaped by Zanetto artisans.



^ vase amphora RHODOS
design Enrico Z - numbered work
Texture Buccia, hand engraving, shiny
h 47 dm 15 (l.27)
7032 Silver plated and titanium plated
7032B light gold and titanium plated 42





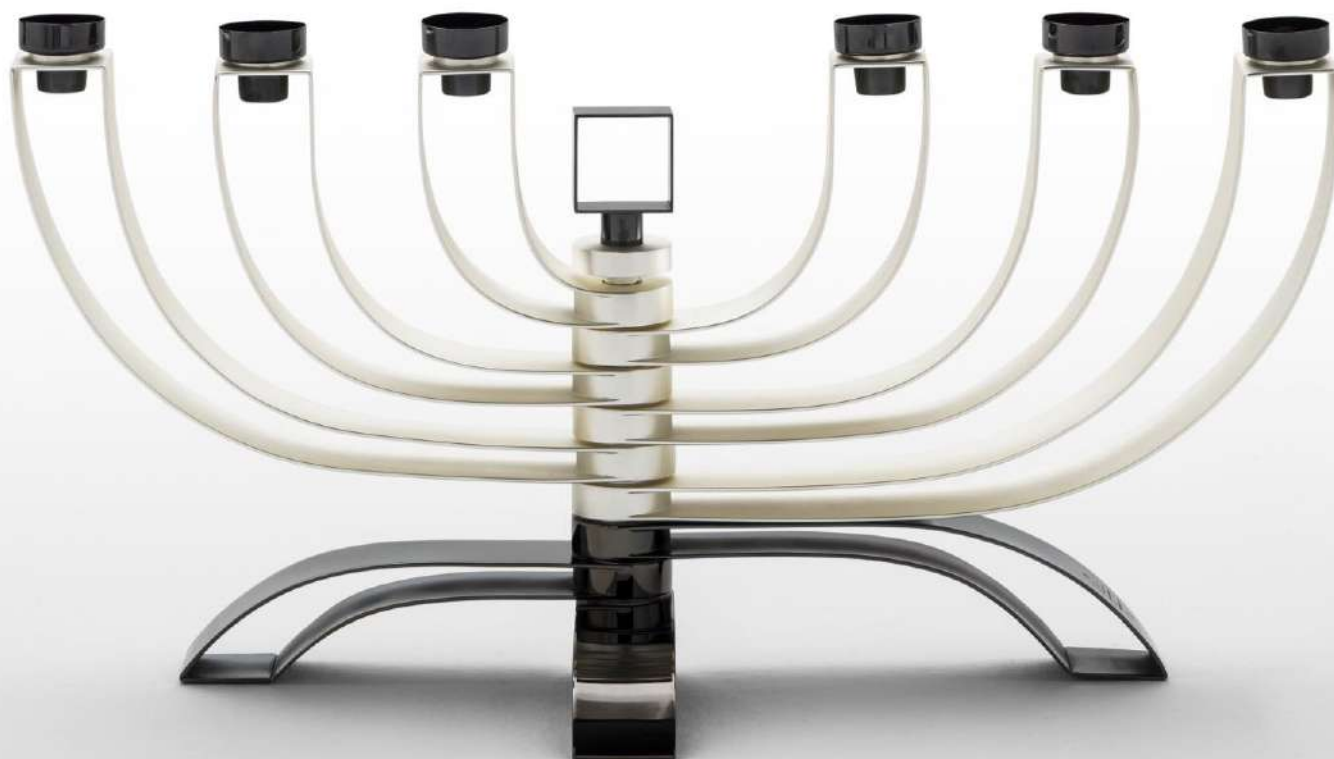
▲ **CONVERTENDO** Vase - Design Enrico Z
 texture CORTECCIA – shiny – varnished - h 30 26x16
7018 A silver and brass - **7018 T** titanium and copper
numbered work

CONVERTENDO Curves and roundness chase each other, in a game that does not seem to end, relaunched by the specularity of the volumes and punctuated by acute angles that soften into new eye-capturing roundness, in the search for a solution, for a response between the obverse and the verse. And so the shape draws a plant that perhaps is a dove, or perhaps a wriggling fish. The surface ripples thanks to the Cortecchia texture, which traces an upward movement and bends vortices, referring from one face to another and giving further dynamism to this form, which would have remained blissfully placid in its feminine essence. And another movement vibrates the surface, thanks to vigorous brushstrokes that thicken new colors and new chromatic originality.

Fierce brushstrokes to make each piece totally unique.

Between Futurism and Emilio Vedova.

ATLANTIDE It is the nobility of metal, in its chromatic variations and its ability to be "written", to make the light on its surface run. Creating unexpected games, giving amazement. And even more, if it becomes the support of one or several flames that move in space and that are reflected in the glitter – which is never the same for the eye - of the ray that strikes and rebounds. This is how the Atlantis candlestick, designed by Enrico Zanetto, encloses in its geometric dynamism, the very essence of the physics of light. Of its magic. The elegance that is the result of a maniacal search for equilibrium is different every time. The movement of the "arms" can draw imaginary outlines in space and create living, symbolic sculptures, equipped with a hidden soul. Which is called beauty.



▲ **ATLANTIDE** candelabra - Design Enrico Z
shiny & matt – varnished - h 26 l.53
7020 silver and titanium plated
numbered work



Bowl ETERICA In a game of empty and full, the perfection of the sphere plays with the symbol of the metaphysical pear, reflected reversed, as in a darkroom.

An object that holds and expresses special skills in the juggle hammers, fire, and metal oxides.

Here we go bringing new Beauty and new meanings.....



▲ **ETERICA** bowl - Design Enrico Z
texture TARTARUGA – varnished - dm 29 h 19
7012 - copper
numbered work

A decidedly unusual artefact, that defies definition. It can be used as a centerpiece, fruit bowl, and for a host of other purposes. This stems from an age-old process of our workshop, used in the Sixties. It is produced in white bronze, with a polished interior, while the exterior undergoes a special burnishing and oxidation process, to obtain stunning colours of ivory black, burnt earth and platinum grey. The volume is roughened with a hammered finish. The border that underlines and reinforces the contours of the object is applied by hand and then flame welded. Work of superior quality.

The upper section, which partially conceals the content from view, seems to be the remains of a gash, created from an irresistible need to reveal the secret contents of this strange object.

But there is also an esoteric meaning behind it: the cut on the upper section is a clear reminder of the well known symbol in ancient Chinese philosophy that represents the opposites, the intrinsic duality in the material world: in this case presence-absence. Only a personal search leads to an understanding of the absolute and perception of the unit, here represented by the lower integral section.



▲ **SEGRETI SVELATI** bowl - Design Enrico Z
texture TARTARUGA – varnished - dm 42 h 17
7101 - bronze noir
numbered work

DOMINO A simple ring and a sequence of extended 'sails', thanks to the rigidity of the metal from which it is made. Gold, bronze, titanium, copper reflections.... a chromatic sequence creating luminous, amazing and precious plays. DOMINO is a very simple yet versatile, mobile and elegant centrepiece where the elements composing the structure are dynamic and can assume different positions. The image it evokes is that of an audacious, organic and vibrating architecture. The reference is almost immediate: the Cathedral of Brasilia by Oscar Niemeyer, one of the greatest and undisputed masters of XX century architecture. The reference is combined with another concept. The construction of 'beauty' defines the space of awareness, of the intrinsic value of matter and of the need not to waste it. In DOMINO - as in all the Zanetto productions, the theme of 'waste' assumes its own value; it invokes reflections on the preciousness of the fragment that continues to invite precious glints. In fact, the elements composing the centrepiece are the creative re-elaboration of "remnants" of other workings and it is in the ideational process of Enrico Zanetto that they are transformed into an alphabet of a new unique and unrepeatable object. Sustainability, therefore, is not only an imperative linked to the respect of our planet, but is also and above all, art!



▲ **DOMINO** Centerpiece - Design Enrico Z
satin Brass, copper, black titanium plated (varnished)
7010 - dm 27 h14 - dm 39 h10
numbered work



PANTELLERIA A large plate that illuminates the space around it. As if it were the sun colouring one of the most beautiful islands in the Mediterranean Sea. A golden surface that shines, vibrates and reproduces the effect of heat in contact with the Earth. The spectacular workmanship alternates different textures - needles, small balls, mirror - allowing you to concentrate in a single object the 'memory' of our emotions.

In the silver version (silver plated), the lunar symbol is reflected in the ripples of the sea, in the magic of the night, in the sand that flows between the fingers and the silence broken by the surf. Pure beauty.

✓ **PANTELLERIA** round giant plate - Design Enrico Z
texture PALLINE e AGHI - dm 61 h 3
5080 Silver plated - **5080G** gold plated
numbered work





▲ **ELIS** vase

Design Enrico Z - numbered work
smooth&shiny – 60x15 h 20

9543 Silver pl. - **9543B** brass - **9543C** copper -



▲ **CANOA GIGANTE** centerpiece

Design Bernardo Z - numbered work
texture AGHI – 100x18 h 13

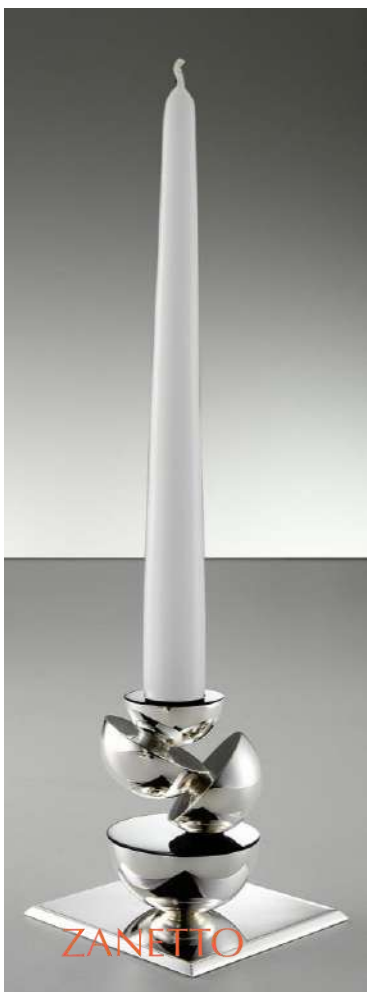
9189 Silver plated - **19189** sterling silver



< **NEWROME** vase - Design Enrico Z
texture AGHI - 32x11 h 25
9740 Silver plated - **9740B** brass
numbered work



> **TRE** vase - Design Denise Viviani
texture AGHI - h 33 31x23 - varnished
9745 Silver plated & copper
numbered work



< **ATMA** candlestick - Design Enrico Z
smooth - 9x9 h 10
9606 shiny silver plated - **9606B** matt - light gold
numbered work



NACO Vase Is an incredible artisan work.

The shape is obtained completely with hammer-work without the aid of machines or moulds:

hours and hours of muscular working and different types of annealing to tame the metal.

The NACO vase is now an icon of Zanetto.



< **NACO vase**
Design Bernardo&Enrico Z
texture AGHI – h 50 21x13
9183 silver plated
9183G gold plated
19183 sterling silver
numbered work

- > **ACCORDI** tray
Design Enrico Z - numbered work
texture RETTANGOLI - 34x35 h 5
7007 copper & white bronze



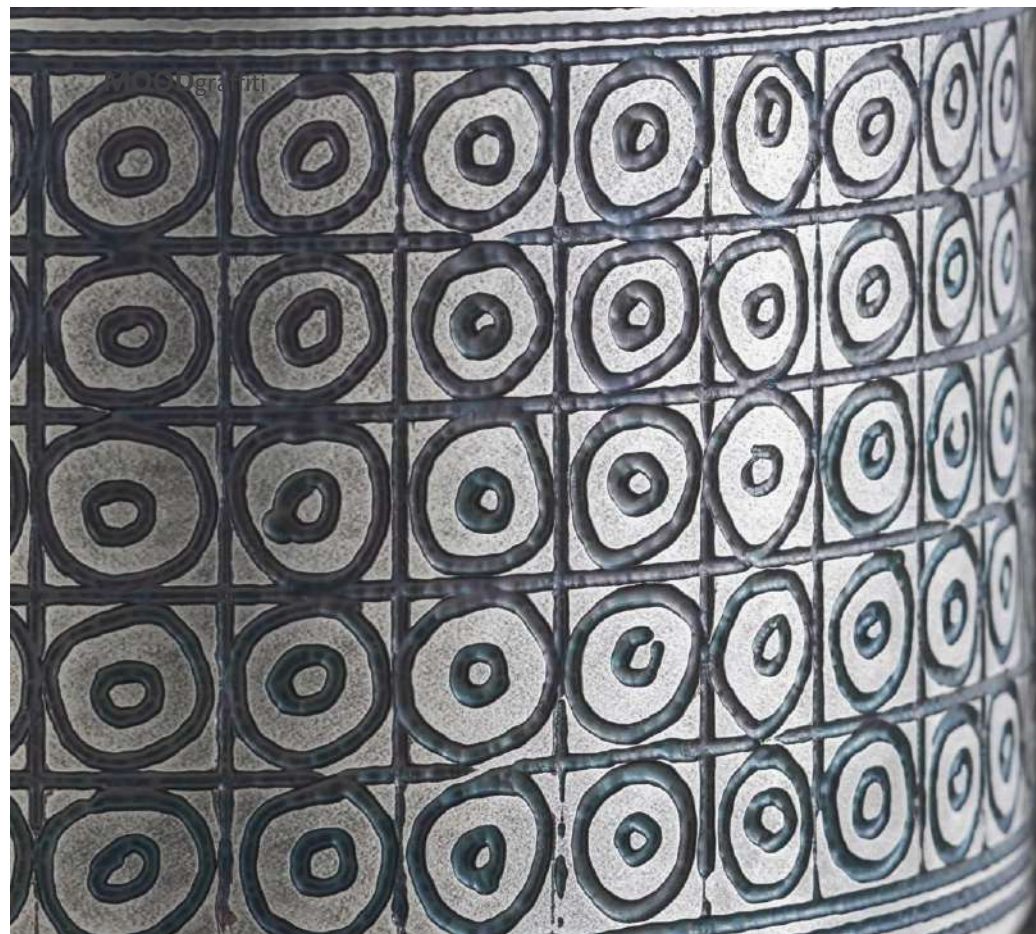
- ^ **ESPANSIONE** bowl
Design Enrico Z - numbered work
texture RETTANGOLI - 50x18 h 9
7001 copper & white bronze
7001 A silver plated



> **ESSENZA** vase - Design Enrico Z
texture AGHI - h 34 dm 25 - varnished
7003 copper & white bronze
numbered work

v **DUEUNO** bowl - Design Enrico Z
text. RETTANGOLI & CANAPA dm 31 h 6
7005 copper & white bronze
numbered work





COLLECTIBLE DESIGN

LE ACQUEFORTI

Engraving is obtained thanks to the ancient method of etching, which requires a patient and very long work, completely by hand. Each mark is different from the other one, each piece is unique. An absolute Value.



< **SUMER** vase - Design Enrico Z
burnished silver plated (varnished)
7203 - h 26 dm 10
numbered work

v **BABILONIA** bowl - Design Enrico Z
burnished silver plated (varnished)
7209 - h 10 dm 20
numbered work



- > **LA FEMME** sculpture
artwork by Enrico Z
gilt metal – silver plated
copper – enamel
oil painting
29x29x45 - **50.001**
limited edition 12 pcs



- ^ **PABLITA** sculpture (hommage a Pablo Picasso)
artwork by Enrico Z - brass & copper
50.003 - h 33 25x10
limited edition 12 pcs



- ^ **AL NOCCIOLO** sculpture
artwork by Enrico Z
gilt metal – silver plated
29x18x7 - **50.002**
limited edition 9 pcs

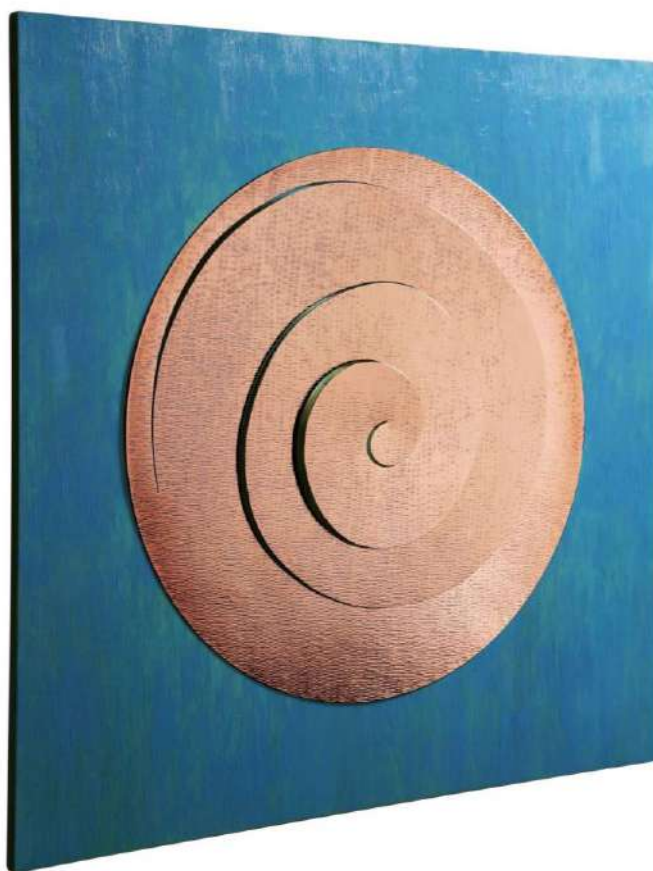
> **6 MILLIONS DROPS AWAKE**

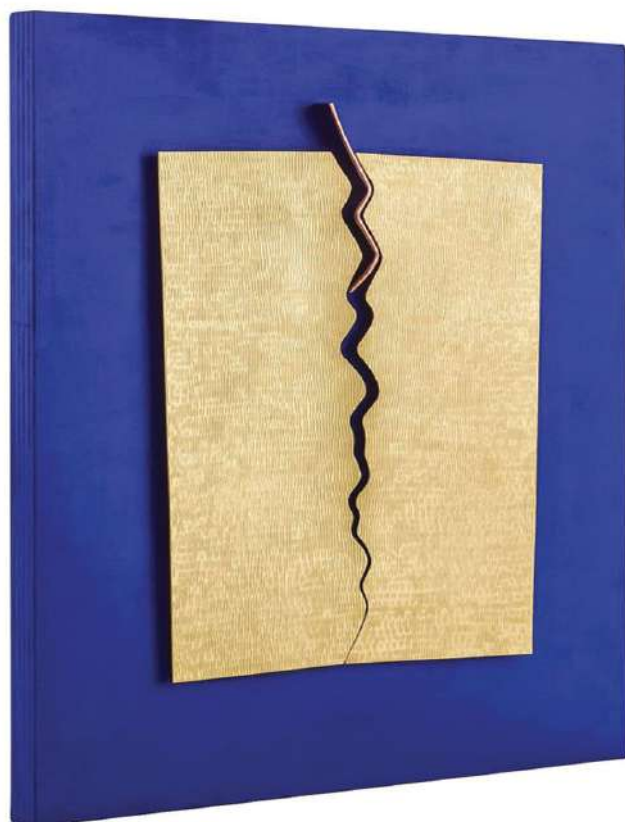
wall sculpture
artwork by Enrico Z
silver plated metal - wood
100x90x6 - **50.501**
limited edition 12 pcs



> **ENERGIA 1** wall sculpture

artwork by Enrico Z
copper - wood
oil painting
85x85x2 - **50.502**
limited edition 12 pcs





< **FORZA**
wall sculpture
artwork by Enrico Z
brass – copper
acrylic on wood
50x60x4 - **50.503**
limited edition 12 pcs



> **IL SOLE** wall sculpture
artwork by Enrico Z
brass – copper
white bronze - wood
39x28 h 8 - **50.505**
unique work of art

EDITION 2024



contact

Zanetto 1963 snc

di Enrico Zanetto & C.

Via Ciro Menotti, 9
35020 Albignasego (pd)
Italy

tel. 0039 049 710204
fax 0039 049 8625466
email: info@zanetto.com

www.zanetto.com





ZANETTO

HANDMADE IN ITALY

www.zanetto.com