

SERIES FOUR

THE BRITISH HALLMARK

All Carrs sterling silver products bear a British hallmark. The hallmark guarantees that the article has been independently tested by a British assay office and conforms to one of the legal standards of purity.



Sponsor's or manufacturer's mark



Fineness mark



The office of assay (Sheffield)



Traditional fineness mark of sterling silver



The year of hallmarking

FEATURE HALLMARK FRAMES

STERLING SILVER FRAMES

Our hand-finished sterling silver frames includes an extensive selection of classic, traditional, art nouveau and contemporary styles, perfect for displaying treasured memories.



PORTLAND



BERKELEY

PHOTO SIZE		STYLE	
CM	INCHES	BLACK WOOD BERKELEY	WOOD PORTLAND
13 x 9	5 x 3½	FR293LG/L-SS	FR063LG/W-SS
15 x 10	6 x 4	FR294LG/L-SS	FR064LG/W-SS
18 x 13	7 x 5	FR295LG/L-SS	FR065LG/W-SS
20 x 15	8 x 6	FR296LG/L-SS	FR066LG/W-SS
25 x 20	10 x 8	FR298LG/L-SS	FR068LG/W-SS

4

NINA CAMPBELL



HEART



BEE



Nina Campbell is one of the world's most respected and influential interior designers. Her list of clients and design expertise is unparalleled. Renowned for her contagious wit and brilliant sense of style, her designs appeal to both young and old and sit well in both contemporary and traditional interiors.

In collaboration with Carrs this stylish collection of engraved sterling silver and silver embellished oak photograph frames have been selected from Nina Campbell's fabric and wallpaper designs. Elegance and inspiration to suit every mood and tone, including the iconic heart design!

CARRS SILVER IN COLLABORATION
WITH NINA CAMPBELL

SIZE		STYLE	
CM	INCHES	HEARTS BLACK WOOD	BEE BLACK WOOD
15 x 10	6 x 4	FR294/L*NC4-SS	FR294/L*NC3-SS
18 x 13	7 x 5	FR295/L*NC4-SS	FR295/L*NC3-SS

5

PORTLAND SERIES



PLAIN



BEAD



EGG & BEAD



REED & RIBBON

SIZE		STYLE							
CM	INCHES	PLAIN	PLAIN	BEAD	BEAD	EGG & BEAD	EGG & BEAD	REED & RIBBON	REED & RIBBON
		WOOD	VELVET	WOOD	VELVET	WOOD	VELVET	WOOD	VELVET
13 x 9	5 x 3½	FR063/W-SS	FR063/C-SS	FR073/W-SS	FR073/C-SS	FR083/W-SS	FR083/C-SS	FR263/W-SS	FR263/C-SS
15 x 10	6 x 4	FR064/W-SS	FR064/C-SS	FR074/W-SS	FR074/C-SS	FR084/W-SS	FR084/C-SS	FR264/W-SS	FR264/C-SS
18 x 13	7 x 5	FR065/W-SS	FR065/C-SS	FR075/W-SS	FR075/C-SS	FR085/W-SS	FR085/C-SS	FR265/W-SS	FR265/C-SS
20 x 15	8 x 6	FR066/W-SS	FR066/C-SS	FR076/W-SS	FR076/C-SS	FR086/W-SS	FR086/C-SS	FR266/W-SS	FR266/C-SS
25 x 20	10 x 8	FR068/W-SS	FR068/C-SS	FR078/W-SS	FR078/C-SS	FR088/W-SS	FR088/C-SS	FR268/W-SS	FR268/C-SS

BERKELEY SERIES



PLAIN



BEAD



REED & RIBBON

SIZE

CM	INCHES	PLAIN	BEAD	REED & RIBBON
		BLACK WOOD	BLACK WOOD	BLACK WOOD
13 x 9	5 x 3½	FR293/L-SS	FR313/L-SS	FR323/L-SS
15 x 10	6 x 4	FR294/L-SS	FR314/L-SS	FR324/L-SS
18 x 13	7 x 5	FR295/L-SS	FR315/L-SS	FR325/L-SS
20 x 15	8 x 6	FR296/L-SS	FR316/L-SS	FR326/L-SS
25 x 20	10 x 8	FR298/L-SS	FR318/L-SS	FR328/L-SS

7

CONTEMPORARY CLASSIC FLAT NARROW SERIES



FNPR



FR041/W-SS



FR043/W-SS



FR026/W-SS



FR025/W-SS



FR018/W-SS

PHOTO SIZE		STYLE	
CM	INCHES	WOOD	WOOD
MULTI APERTURE			
6 x 6	2½ x 2½		FR025/W-SS
6 x 6	2½ x 2½		FR026/W-SS
6 x 6	2½ x 2½		FR041/W-SS
9 x 6	3½ x 2½	FNPR2/W-SS	
13 x 9	5 x 3½	FNPR3/W-SS	
15 x 10	6 x 4	FNPRF3/W-SS	FR019/W-SS
18 x 13	7 x 5	FNPR4/W-SS	FR043/W-SS
20 x 15	8 x 6	FNPRX4/W-SS	
25 x 20	10 x 8	FNPR5/W-SS	
10 x 10	4 x 4	FNPSQ3/W-SS	FR018/W-SS

CONTEMPORARY CLASSIC FLAT SERIES



FR017/W-SS



FPR



FR006/W-SS



FR009/W-SS



FSQ2/W-SS

PHOTO SIZE		STYLE	
CM	INCHES	WOOD	WOOD
MULTI APERTURE			
5 x 5	2 x 2		FR006/W-SS
5 x 5	2 x 2		FR017/W-SS
8 x 8	3 x 3	FSQ2/W-SS	
9 x 6	3½ x 2½	FPR2/W-SS	
13 x 9	5 x 3½	FPR3/W-SS	FR009/W-SS
15 x 10	6 x 4	FPRF3/W-SS	
18 x 13	7 x 5	FPR4/W-SS	
20 x 15	8 x 6	FPRX4/W-SS	
25 x 20	10 x 8	FPR5/W-SS	

9

CONTEMPORARY FLAT WIDE SERIES



FWPR



FWPSQ

SIZE		STYLE
CM	INCHES	WOOD
13 x 9	5 x 3½	FWPR3/W-SS
15 x 10	6 x 4	FWPRF3/W-SS
18 x 13	7 x 5	FWPR4/W-SS
25 x 20	10 x 8	FWPR5/W-SS
13 x 13	5 x 5	FWPSQ3/W
20 x 20	8 x 8	FWPSQ5/W

CLASSIC W SERIES

WP
PLAINWR
ROPEWRR
REED & RIBBON

SIZE		STYLE		
CM	INCHES	PLAIN WOOD	ROPE WOOD	REED & RIBBON WOOD
9 x 6	3½ x 2½	WP2-SS	WR2-SS	WRR2-SS
13 x 9	5 x 3½	WP3-SS	WR3-SS	WRR3-SS
15 x 10	6 x 4	WPF3-SS	WRF3-SS	WRRF3-SS
18 x 13	7 x 5	WP4-SS	WR4-SS	WRR4-SS
20 x 15	8 x 6	WPX4-SS	WRX4-SS	WRRX4-SS
25 x 20	10 x 8	WP5-SS	WR5-SS	WRR5-SS
29.5 x 20	11½ x 8	WP6-SS		

11

CLASSIC PR & SERIES



PR



PS2-SS

PHOTO SIZE

CM	INCHES	PLAIN VELVET
5 x 4	2 x 1½	PR1-SS
9 x 6	3½ x 2½	PR2-SS
13 x 9	5 x 3½	PR3-SS
15 x 10	6 x 4	PRF3-SS
18 x 13	7 x 5	PR4-SS
20 x 15	8 x 6	PRX4-SS
25 x 20	10 x 8	PR5-SS
13 x 13	5 x 5	
9 x 9	3½ x 3½	PS2-SS

12

CLASSIC SERIES



SWP



NERO

PHOTO SIZE		STYLE	
CM	INCHES	PLAIN WOOD	NERO WOOD
13 x 9	5 x 3½	SWP/W3-SS	
15 x 10	6 x 4	SWP/W/F3-SS	FR134/W-SS
18 x 13	7 x 5	SWP/W4-SS	FR135/W-SS
20 x 15	8 x 6	SWP/W/X4-SS	
25 x 20	10 x 8	SWP/W5-SS	FR138/W-SS

13

CLASSIC N SERIES



NPR
PLAIN



NBR
BEAD



NRR
REED & RIBBON

PHOTO SIZE		STYLE		
CM	INCHES	PLAIN VELVET	BEAD VELVET	REED & RIBBON VELVET
5 x 4	2 x 1½	NPR1-SS	NBR1-SS	NRR1-SS
9 x 6	3½ x 2½	NPR2-SS	NBR2-SS	NRR2-SS
13 x 9	5 x 3½	NPR3-SS	NBR3-SS	NRR3-SS
15 x 10	6 x 4	NPRF3-SS	NBRF3-SS	NRRF3-SS
18 x 13	7 x 5	NPR4-SS	NBR4-SS	NRR4-SS
20 x 15	8 x 6	NPRX4-SS	NBRX4-SS	NRRX4-SS
25 x 20	10 x 8	NPR5-SS	NBR5-SS	NRR5-SS

TEXTURED FRAMES



TAMPANI



CROSS STITCH



FLUTED

PHOTO SIZE		STYLE	STYLE	STYLE
CM	INCHES	TAMPANI BLACK WOOD	CROSS STITCH BLACK WOOD	FLUTED WOOD
13 x 9	5 x 3½	FR203/L-SS		RE3-SS
15 x 10	6 x 4	FR204/L-SS	LRLF393-SS	REF3-SS
18 x 13	7 x 5	FR205/L-SS	LRL493-SS	RE4-SS
20 x 15	8 x 6		LRLX493-SS	REX4-SS
25 x 20	10 x 8	FR208/L-SS		RE5-SS

15

SHAPED

HT01-SS
MODERN HEART

PLAIN



BEAD



HEART



BEAD



PLAIN

PHOTO SIZE		STYLE				
CM	INCHES	OVAL BEAD VELVET	OVAL PLAIN VELVET	CIRCLE BEAD VELVET	CIRCLE PLAIN VELVET	HEART VELVET
4 dia	1½ dia			BC1-SS	PC1-SS	
5 x 4	2 x 1½		PO1-SS			
6 dia	2½ dia			BC2-SS	PC2-SS	
6 x 5	2½ x 2					PH1-SS
8 x 6	3 x 2½					PH2-SS
9 dia	3½ dia			BC3-SS	PC3-SS	
9 x 6	3½ x 2½	NBO2-SS	PO2-SS			
11 x 9	4½ x 3½					PH3-SS
13 dia	5 dia				PC4-SS	
13 x 9	5 x 3½	NBO3-SS	PO3-SS			
18 x 13	7 x 5	NBO4-SS	PO4-SS			
9 x 6	3½ x 3					HT01-SS

ART NOUVEAU & CELTIC



ART NOUVEAU



ART NOUVEAU



CELTIC

PHOTO SIZE		STYLE	STYLE	STYLE
CM	INCHES	ART NOUVEAU WOOD	ART NOUVEAU WOOD	CELTIC BLACK WOOD
15 x 10	6 x 4	AN3A/W-SS	AN3C/W-SS	CTCF3/L-SS
18 x 13	7 x 5	AN4A/W-SS	AN4C/W-SS	CTC4/L-SS

17

VINTAGE



BA140



LRC486-SS



BA83-SS



BA141



LRC286-SS

PHOTO SIZE		STYLE
CM	INCHES	VINTAGE
		GREY VELVET
9 x 6	3½ x 2½	LRC286-SS
9 x 6	3½ x 2½	BA140-SS
9 x 6	3½ x 2½	BA141-SS
10 x 8	4 x 3¼	BA83-SS
18 x 13	7 x 5	LRC486-SS

Traditional frames were originally made to non standard sizes, these are the nearest recommended photo sizes.

18

TRADITIONAL BRH & BA SERIES



BA138-SS



BRH4-SS



BA131-SS

PHOTO SIZE		STYLE
CM	INCHES	VELVET
9 x 6	3½ x 2½	BA131-SS
13 x 9	5 x 3½	BA138-SS
18 x 13	7 x 5	BRH4-SS

Traditional frames were originally made to non standard sizes, these are the nearest recommended photo sizes.

19

TRADITIONAL PDR & BA SERIES



PDR



BA108-SS



BA75-SS



PDR



BA139-SS

Traditional frames were originally made to non standard sizes, these are the nearest recommended photo sizes.

PHOTO SIZE		STYLE	
CM	INCHES	VELVET	VELVET
8 x 6	3 1/4 x 2 1/4	BA139-SS	
9 x 6	3 1/2 x 2 1/2	BA108-SS	PDR2-SS
9 x 13	3 1/2 x 5		PDR3L-SS
13 x 9	5 x 3 1/2		PDR3-SS
13 x 13	5 x 5	BA75-SS	
13 x 18	5 x 7		PDR4L-SS
18 x 13	7 x 5		PDR4-SS

TRADITIONAL BA SERIES



BA111-SS



BA124-SS



BA125-SS



BA77-SS



BA13-SS

Traditional frames were originally made to non standard sizes, these are the nearest recommended photo sizes.

PHOTO SIZE		STYLE
CM	INCHES	VELVET
13 x 9	5 x 3½	BA13-SS
18 x 13	7 x 5	BA77-SS
25 x 20	10 x 8	BA111-SS
20 x 15	8 x 6	BA124-SS
15 x 10	6 x 4	BA125-SS

21

TRADITIONAL BA SERIES



BA114-SS



BA115-SS



BA66-SS



BA10-SS

PHOTO SIZE		STYLE
CM	INCHES	VELVET
15 x 10	6 x 4	BA10-SS
15 x 10	6 x 4	BA66-SS
20 x 15	8 x 6	BA114-SS
18 x 13	7 x 5	BA115-SS

Traditional frames were originally made to non standard sizes, these are the nearest recommended photo sizes.

TRADITIONAL BA SERIES



BA34-SS



BA33-SS



BA06-SS



BA32-SS



BA71-SS



BA58-SS



BA132-SS

PHOTO SIZE		STYLE
CM	INCHES	VELVET
13 x 9	5 x 3½	BA06-SS
9 x 6	3½ x 2½	BA32-SS
18 x 13	7 x 5	BA33-SS
25 x 20	10 x 8	BA34-SS
9 x 13	3½ x 5	BA58-SS
13 x 18	5 x 7	BA71-SS
6 x 9	2½ x 3½	BA132-SS

Traditional frames were originally made to non standard sizes, these are the nearest recommended photo sizes.

23

TRADITIONAL BA SERIES



BA80-SS



BA26-SS



VR4-SS



BA65-SS



BA22-SS



BA96-SS



BA102-SS

Traditional frames were originally made to non standard sizes, these are the nearest recommended photo sizes.

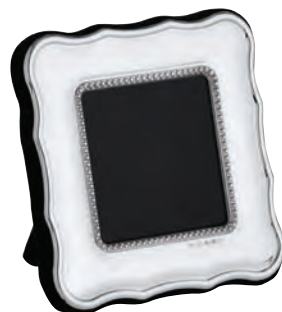
PHOTO SIZE		STYLE
CM	INCHES	VELVET
15 x 10	6 x 4	BA22-SS
20 x 15	8 x 6	BA26-SS
13 x 18	5 x 7	BA65-SS
18 x 13	7 x 5	VR4-SS

PHOTO SIZE		STYLE
CM	INCHES	VELVET
18 x 13	7 x 5	BA80-SS
5 x 4	2 x 1½	BA96-SS
5 x 4	2 x 1½	BA102-SS

TRADITIONAL BA SERIES



BA21-SS



BA126-SS



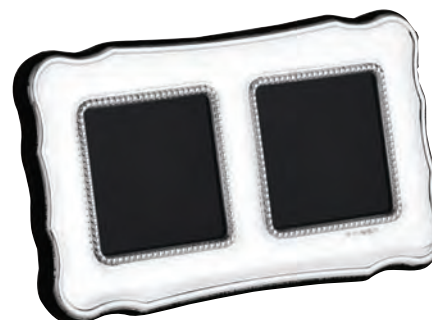
BA103-SS



BA12-SS



BA18-SS



BA129-SS



BA137-SS



BA120-SS



BA105-SS

PHOTO SIZE		STYLE
CM	INCHES	VELVET
15 x 15	6 x 6	BA12-SS
15 x 10	6 x 4	BA18-SS
5 x 5	2 x 2	BA126-SS
5 x 5	2 x 2	BA129-SS
5 x 5	2 x 2	BA120-SS

PHOTO SIZE		STYLE
CM	INCHES	VELVET
5 dia	2 dia	BA103-SS
4.5 x 3.6	1 3/4 x 1 1/2	BA105-SS
9 dia	3 1/2 dia	BA137-SS
9 dia	3 1/2 dia	BA21-SS

Traditional frames were originally made to non standard sizes, these are the nearest recommended photo sizes.

STERLING SILVER CHILDREN'S GIFTS

A beautifully finished and timeless collection of gifts that will delight parents and children for generations to come.

25



CH1/J/W-SS



NK035-SS



NK036-SS



HS003-SS

CODE	SIZE		STYLE
	CM	INCHES	
HS003-SS	2.8 dia, H1.4	1 1/4 dia, H 5/8	MOVABLE BEAR BOX
NK035-SS	3.3 dia, H1.3	1 1/4 dia, H 1/2	FIRST CURL BOX
NK036-SS	3.3 dia, H1.3	1 1/4 dia, H 1/2	FIRST TOOTH BOX
CH1/J/W-SS	6 dia	2 3/8 dia	LOCK OF HAIR KEEPSAKE FRAME

BRACELETS & BOOKMARKS



BCH1-SS



STC082-SS



BM/F-SS



PNJ045-SS



PNJ047-SS

CODE	SIZE		STYLE
	CM	INCHES	
BCH1-SS			CANDLE HOLDER INCLUDING WHITE CANDLE
PNJ045-SS	5 dia	2 dia	CHILD'S BRACELET
PNJ047-SS	4 dia	1½ dia	CHILD'S ADJUSTABLE BRACELET
BM/F-SS	5 long	2 long	CROSS BOOKMARK
STC082-SS	9.3 long	3¾ long	OWL BOOKMARK

MONEY & KEEPSAKE
BOXES



MBOX5/W-SS



WG006/W-SS

CODE	PHOTO SIZE		PRODUCT SIZE		STYLE
	CM	INCHES	CM	INCHES	
MBOX5/W-SS	5 x 5	2 x 2	9 x 9 x 9	3½ x 3½ x 3½	PHOTO MONEY BOX MAHOGANY FINISH
WG006/W-SS	5 x 5	2 x 2	9 x 9 x 5	3½ x 3½ x 2	BEAR PHOTO FRAME KEEPSAKE BOX

28

FRAMES



CH3/B-SS



CH3L/B-SS



CH2/B-SS

SIZE		STYLE
CM	INCHES	VELVET
8 x 6	3 x 2.5	CH2/B-SS
10 x 8	4 x 3	CH3/B-SS
8 x 10	3 x 4	CH3L/B-SS

29
FRAMES



CR2-SS



CHF3/N/W-SS



CH2/H/W-SS



CR3

PHOTO SIZE		STYLE	
CM	INCHES	VELVET	WOOD
5 x 5	2 x 2		CH2/H/W-SS
10 x 8	4 x 3	CR3-SS	CR3/W-SS
13 x 9	5 x 3½	CR2-SS	
15 x 10	6 x 4		CHF3/N/W-SS

30

EGG CUPS



EC1-SS

OE-11SET2-SS



EC3/SET-SS



EC1/SET-SS



STERLING SILVER PLAQUES

Sterling silver plaques are available for all presentation cases. If required please order using reference SP14-SS.

Presentation cases are supplied with a separate engravable stainless steel plaque.

CODE	SIZE		STYLE
	CM	INCHES	
EC1-SS	4.5 tall	1 $\frac{7}{8}$ tall	EGG CUP
EC1/SET-SS			EGG CUP & SPOON IN PRESENTATION CASE
EC3/SET-SS			EGG CUP & SPOON
OE11SET2-SS	12 long	4 $\frac{3}{4}$ long	CHILD'S SPOON

SIZE		PRESENTATION CASE ONLY
CM	INCHES	
12.5 x 15.5 x 8.5	6 $\frac{1}{8}$ x 4 $\frac{15}{16}$ x 3 $\frac{3}{16}$	EC1/SET-CASE/F

KEEPSAKES



KSTB2-SS



KSTB3-SS



KSTB8-SS



TF-SS



TF3-SS

CODE	SIZE		STYLE
	CM	INCHES	
KSTB2-SS	4 tall	1½ tall	BEAR KEEPSAKE
KSTB3-SS	4 tall	1½ tall	BEAR KEEPSAKE
KSTB8-SS	4 tall	1½ tall	RUNNY HONEY KEEPSAKE
TF-SS	4 tall	1½ tall	TOOTH FAIRY KEEPSAKE
TF3-SS	4 tall	1½ tall	TOADSTOOL KEEPSAKE

32 CUPS



CC1/SET-SS



CC1-SS



STERLING SILVER PLAQUES

Sterling silver plaques are available for all presentation cases. If required please order using reference SP14-SS.

Presentation cases are supplied with a separate engravable stainless steel plaque.

SIZE		PRESENTATION CASE ONLY
CM	INCHES	
15.5 x 8.5 x 5.5	6 1/8 x 3 3/16 x 2 1/16	CC1/SET-CASE/F

CODE	SIZE		STYLE
	CM	INCHES	
CC1-SS	8 tall	3 tall	CUP
CC1/SET-SS			CUP IN PRESENTATION CASE

33

CLASSIC NAPKIN RINGS & SPOON



CSPN15-SS



CSPN1-SS



NAP2-SS



NAP6-SS



NAP11-SS

CODE	SIZE		STYLE
	CM	INCHES	
CSPN1-SS			LOOP HANDLE SPOON
CSPN15-SS	8.6 long		LOOP HANDLE SPOON
NAP2-SS	4.5 dia	1¾ dia	ROUND NAPKIN RING
NAP6-SS	5½ x H3	1¾ x 1¼	OVAL NAPKIN RING
NAP11-SS	4.5 dia	1¾ dia	ROUND NARROW NAPKIN RING

RATTLES, BRUSH
& COMB



PN100-SS



PN105-SS

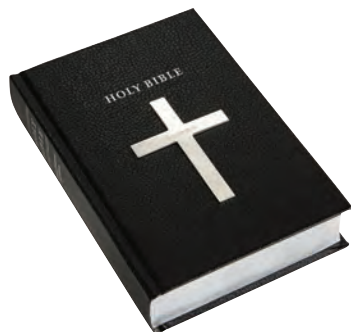


BYR6-SS

CODE	SIZE		STYLE
	CM	INCHES	
BYR6-SS	6 dia	2½ dia	BABY'S RATTLE
PN100-SS	10.5 long	4¼ long	BABY'S RATTLE
PN105-SS	10 long	4 long	RATTLE WITH MOTHER OF PEARL HANDLE

35

BIBLES



GB7-SS-BLA



GB2-SS-BLA



GB2-SS-CRE



GB5-SS-BLA



GB5-SS-CRE



NT1-SS-PINK



NT1-SS-BLUE



NT1-SS-CRE

CODE	STYLE
GB2-SS-BLA	ORNATE CROSS
GB2-SS-CRE	ORNATE CROSS
GB5-SS-BLA	PLAIN CROSS
GB5-SS-CRE	PLAIN CROSS
GB7-SS-BLA	CROSS

CODE	STYLE
NT1-SS-BLUE	BLUE NEW TESTAMENT
NT1-SS-CRE	WHITE NEW TESTAMENT
NT1-SS-PINK	PINK NEW TESTAMENT

STERLING SILVER GIFTS

A collection of gifts to be
cherished, and handed down
from one generation to the
next.

FEATURE HALLMARK CUFFLINKS



CUFF/B-SS



CUFF/F-SS



CUFF/H-SS

CODE	STYLE
CUFF/B-SS	INGOT POST FEATURE HALLMARK
CUFF/F-SS	OVAL POST FEATURE HALLMARK
CUFF/H-SS	SQUARE POST FEATURE HALLMARK

PLAIN CUFFLINKS



PN117-SS



PN121-SS



PN161-SS



CUFF/D/S-SS



CUFF/E/S-SS



CUFF/F/S-SS



CUFF/B/S-SS



CUFF/H/S-SS



PN149-SS

CODE	STYLE	CODE	STYLE
CUFF/B/S-SS	INGOT POST	PN117-SS	PLAIN RECTANGULAR POST
CUFF/D/S-SS	ROUND POST	PN121-SS	OVAL COINED EDGE POST
CUFF/E/S-SS	OVAL CHAIN	PN149-SS	KNOT POST
CUFF/F/S-SS	OVAL POST	PN161-SS	RECTANGLE COINED EDGE POST
CUFF/H/S-SS	SQUARE POST		

38

KEYRINGS



KEY3/A-SS



KEY3/I2-SS



KEY3/I2/S-SS



KEY3/O-SS



KEY3/O/S-SS

CODE	STYLE
KEY3/I2-SS	FEATURE HALLMARK HALF OUNCE INGOT KEYRING
KEY3/I2/S-SS	HALF OUNCE INGOT KEYRING
KEY3/A-SS	ARCH KEYRING
KEY3/O-SS	FEATURE HALLMARK OVAL KEYRING
KEY3/O/S-SS	OVAL KEYRING

BOOKMARKS



BM/A-SS



BM/A/S-SS



BM/B-SS



BM/B/S-SS

CODE	STYLE
BM/A/S-SS	ARCH BOOKMARK WITH TASSEL
BM/A-SS	FEATURE HALLMARK BOOKMARK WITH TASSEL
BM/B/S-SS	OVAL BOOKMARK WITH TASSEL
BM/B-SS	FEATURE HALLMARK OVAL BOOKMARK WITH TASSEL

40
.....
MONEY CLIPS



CLIP/A/S-SS



CLIP/C-SS



CLIP/A-SS



CLIP/C/S-SS

CODE	STYLE
CLIP/A-SS	FEATURE HALLMARK MONEY CLIP
CLIP/A/S-SS	MONEY CLIP
CLIP/C-SS	FEATURE HALLMARK MONEY CLIP
CLIP/C/S-SS	MONEY CLIP

TIE SLIDES &
ACCESSORIES

TIE/A-SS



TIE/A/S-SS



TG004-SS



COLL/A-SS



COLL/C-SS



TG005-SS

CODE	PHOTO SIZE		STYLE
	CM	INCHES	
COLL/A-SS			COLLAR STIFFENERS
COLL/C-SS			SHORT COLLAR STIFFENERS
TG004-SS	5 x 4	2 x 1½	TWO PHOTO FOLDING FRAME
TG005-SS	5 x 4	2 x 1½	THREE PHOTO FOLDING FRAME
TIE/A-SS			FEATURE HALLMARK TIE BAR
TIE/A/S-SS			TIE BAR

42
ACCESSORIES

GCR-SS



PN103-SS



PN191-SS

CODE	STYLE
GCR-SS	GOLF PITCH REPAIRER
PN103-SS	NAPKIN HOLDER
PN191-SS	WHISTLE

KEEPSAKE BOXES



NK001-SS



NK002-SS



NK003-SS



NK004-SS

CODE	SIZE		STYLE
	CM	INCHES	
NK001-SS	L3.6, W2.8, H1.3	L1 $\frac{3}{8}$, W1 $\frac{1}{8}$, H $\frac{1}{4}$	RECTANGULAR
NK002-SS	L4, W3.1, H1.5	L1 $\frac{5}{8}$, W1 $\frac{1}{4}$, H $\frac{5}{8}$	OVAL
NK003-SS	3.3 dia, H1.2	1 $\frac{1}{4}$ dia, H $\frac{1}{2}$	ROUND
NK004-SS	L3.2, W3.4, H1.4	L1 $\frac{1}{4}$, W1 $\frac{5}{8}$, H $\frac{9}{16}$	HEART

44

ACCESSORIES



HM3-SS



PN147-SS

CODE	SIZE		STYLE
	CM	INCHES	
HM3-SS	8 dia	3 dia	HANDBAG MIRROR & POUCH
PN147-SS	8 long	3 long	ATOMISER

45

KEEPSAKE BOXES



WG004/W-SS



TB4H/M-SS



TB3H/M-SS



TB4H/M-SS

CODE	PHOTO SIZE		PRODUCT SIZE		STYLE
	CM	INCHES	CM	INCHES	
TB2H/M-SS			11 x 9 x 5	4½ x 3½ x 2	OVAL BEAD
TB3H/M-SS			16 x 12 x 5	6½ x 4½ x 2	OVAL BEAD
TB4H/M-SS			22 x 18 x 7	8½ x 7 x 3	OVAL BEAD
WG004/W-SS	9 x 6	3½ x 2½	12 x 9 x 5	4¾ x 3½ x 2	KEEPSAKE BOX

46

CLOCKS



C1C/C-SS



C1E/C-SS



C1R/C-SS



C1F/C-SS

CODE	SIZE		STYLE
	CM	INCHES	
C1C/C-SS	6 x 5	2½ x 2	REED & RIBBON WITH VELVET BACK
C1E/C-SS	9 x 6	3½ x 2½	BEAD WITH VELVET BACK
C1F/C-SS	9 x 6	3½ x 2½	REGENCY WITH VELVET BACK
C1R/C-SS	6 x 5	2½ x 2	PLAIN WITH VELVET BACK

47

PAPERKNIVES



PK8-SS

PKC1-SS

PKC2-SS

PKC3-SS

CODE	SIZE		STYLE
	CM	INCHES	
PK8-SS	20 long	8 long	GEORGIAN MEAT SKEWER PAPERKNIFE
PKC1-SS	21 long	8½ long	PLAIN PISTOL HANDLE PAPERKNIFE
PKC2-SS	21 long	8½ long	ALBANY HANDLE PAPERKNIFE
PKC3-SS	21 long	8½ long	OLD ENGLISH HANDLE PAPERKNIFE

STERLING SILVER BARWARE

A stunning collection of drinks
related, entertaining products
and accessories.

48

CLARET JUGS



JUG306/A-SS



JUG309/A-SS

CODE	SIZE		CAPACITY	STYLE
	CM	INCHES		
JUG306/A-SS	31.5 tall	12½ tall	100cl (33 fl/oz)	PLAIN CLARET JUG 24% LEAD CRYSTAL
JUG309/A-SS	31.5 tall	12½ tall	100cl (33 fl/oz)	HENLEY CLARET JUG 24% LEAD CRYSTAL



DEC106/A-SS



DECM106/A-SS

CODE	SIZE		CAPACITY	STYLE
	CM	INCHES		
DEC106/A-SS	31.5 tall	12½ tall	75cl (25 fl/oz)	CRYSTAL WINE DECANTER
DECM106/A-SS	40 tall	16 tall	150cl (50 fl/oz)	CRYSTAL MAGNUM WINE DECANTER

50

LINEAR DECANTERS



DEC205/A-SS



DEC305/A-SS

CODE	SIZE		CAPACITY	STYLE
	CM	INCHES		
DEC205/A-SS	27 tall	10 $\frac{5}{8}$ tall	75cl (25 fl/oz)	SHIP'S DECANTER LINEAR CUT 24% LEAD CRYSTAL
DEC305/A-SS	25 tall	10 tall	65cl (22 fl/oz)	SPIRIT DECANTER HENLEY CUT 24% LEAD CRYSTAL

SPIRAL DECANTERS



DEC108/A-SS



DEC208/A-SS

CODE	SIZE		CAPACITY	STYLE
	CM	INCHES		
DEC108/A-SS	31.5 tall	12½ tall	75cl (25 fl/oz)	WINE DECANTER SPIRAL CUT 24% LEAD CRYSTAL
DEC208/A-SS	27 tall	10¾ tall	75cl (25 fl/oz)	SHIP'S DECANTER SPIRAL CUT 24% LEAD CRYSTAL

52

HENLEY SERIES



DEC109/A-SS



DEC209/A-SS



DEC309/A-SS

CODE	SIZE		CAPACITY	STYLE
	CM	INCHES		
DEC109/A-SS	31.5 tall	12½ tall	75cl (25 fl/oz)	WINE DECANTER HENLEY CUT 24% LEAD CRYSTAL
DEC209/A-SS	27 tall	10¾ tall	75cl (25 fl/oz)	SHIPS DECANTER HENLEY CUT 24% LEAD CRYSTAL
DEC309/A-SS	25 tall	10 tall	65cl (22 fl/oz)	SPIRIT DECANTER HENLEY CUT 24% LEAD CRYSTAL



FLASK6/CSET-SS



FUNNEL1-SS

CODE	STYLE
FLASK6/CSET-SS	HIP FLASK AND FUNNEL
FUNNEL1-SS	SPIRIT FUNNEL

54

ACCESSORIES



STC087-SS



LABEL2-SS



PPCC2-SS



PN182-SS

CODE	SIZE		CAPACITY	STYLE
	CM	INCHES		
LABEL2-SS				RECTANGULAR DECANTER LABEL
PPCC2-SS	10 dia	4 dia		SINGLE DRINKS COASTER
PN182-SS	12.5 long	4 ¹⁵ / ₁₆ long		SWIZZLE STICK
STC087-SS				PLAIN LABEL

55

STRAIGHT BOTTLE
COASTERS

BOCS/3.5-SS



BOCS/5-SS

CODE	SIZE		STYLE
	CM	INCHES	
BOCS/3.5-SS	9 dia	3½ dia	STRAIGHT SIDED
BOCS/5-SS	13 dia	5 dia	STRAIGHT SIDED

56

RICHMOND CANDLESTICKS

STERLING SILVER TABLE TOP

From napkin rings and candlesticks,
to salvers and condiment sets,
our superb table accessories
will enhance both classic and
contemporary settings.

CS13/6.5-SS

CS13/8-SS

CODE	SIZE	
	CM	INCHES
CS13/6.5-SS	16 tall	6½ tall
CS13/8-SS	20 tall	8 tall

57

SALT & PEPPER MILS



2PCCONDE-SS

CODE	SIZE		STYLE
	CM	INCHES	
SALTCONDE-SS	10.1 tall	4 tall	SALT MILL
PEPPCONDE-SS	10.1 tall	4 tall	PEPPER MILL
2PCCONDE-SS			SALT & PEPPER MILL SET

58

CHIPPENDALE WAITERS



SIZE		STYLE	
CM	INCHES	UNMOUNTED CHIPPENDALE WAITER	UNMOUNTED CHIPPENDALE WAITER CASED
13 dia	5 dia	CPB5/W-SS	
15 dia	6 dia	CPB6/W-SS	
20 dia	8 dia	CPB8/W-SS	CPB8/WSET-SS
25 dia	10 dia	CPB10/W-SS	CPB10/WSET-SS
30 dia	12 dia	CPB12/W-SS	CPB12/WSET-SS



STERLING SILVER PLAQUES

Sterling silver plaques are available for all presentation cases. If required please order using reference SP14-SS.

Presentation cases are supplied with a separate engravable stainless steel plaque.

PRESENTATION CASE ONLY	SIZE	
	CM	INCHES
CPB8-CASE/F	L25, W25, H5.5	L10, W10, H2¼
CPB10-CASE/F	L29.5, W29.5, H7.5	L11½, W11½, H3
CPB12-CASE/F	L34.5, W34.5, H7.5	L13½, W13½, H3

59

DISHES



STERLING SILVER PLAQUES

Sterling silver plaques are available for all presentation cases. If required please order using reference SP14-SS.

Presentation cases are supplied with a separate engravable stainless steel plaque.

PRESENTATION CASE ONLY	SIZE	
	CM	INCHES
DD8-CASE/F	L25, W25, H5.5	L10, W10, H2¼
DD10-CASE/F	L29.5, W29.5, H7.5	L11½, W11½, H3
DD12-CASE/F	L34.5, W34.5, H7.5	L13½, W13½, H3

SIZE		STYLE	
CM	INCHES	DRAKES DISH	DRAKES DISH IN PRESENTATION CASE
13 dia	5 dia	DD5-SS	
15 dia	6 dia	DD6-SS	
20 dia	8 dia	DD8-SS	DD8SET-SS
25 dia	10 dia	DD10-SS	DD10SET-SS
30 dia	12 dia	DD12-SS	DD12SET-SS

60

NAPKIN RINGS



NAP2-SS



NAP6-SS



NAP8-SS



NAP9-SS



NAP11-SS



PN102-SS

CODE	SIZE		STYLE
	CM	INCHES	
NAP2-SS	4.5 dia	1¾ dia	ROUND NAPKIN RING
NAP6-SS	L5.5, H3	L1¾, H1¼	OVAL NAPKIN RING
NAP8-SS	4.5 dia	1¾ dia	ROUND NAPKIN RING WITH WRAP
NAP9-SS	4.5 dia	1¾ dia	ROUND CONCAVE NAPKIN RING
NAP11-SS	4.5 dia	1¾ dia	ROUND NARROW NAPKIN RING
PN102-SS	4.5 dia	1¾ dia	NAPKIN RING WITH WRAP

ENGRAVING STYLES

Adorable

Engraving is available in numerous styles

Ariel

Engraving is available in numerous styles

Eccentric

ENGRAVING IS AVAILABLE IN NUMEROUS STYLES

Goudy 5L

Engraving is available in numerous styles

Old English 3L

Engraving is available in numerous styles

Script 4L

Engraving is available in numerous styles

Stencil bold 8L

Engraving is available in numerous styles

Times 8L

Engraving is available in numerous styles

Vanessa 56 6L

Engraving is available in numerous styles

Times New Roman Italic

Engraving is available in numerous styles

Bespoke artwork can also be arranged.



CARRS
SILVER
SHEFFIELD ENGLAND



ENGRAVING TERMS & CONDITIONS

1) Engraving is subject to a minimum charge. 2) Estimated delivery time will be given on request. 3) Engraving will only be carried out on Carrs factory supplied products. 4) Origination costs may apply for non-text artwork e.g company logos (prices on application). 5) Artwork for each contract is to be authorised by the customer in writing. 6) Engraving is done in-house on a CNC engraving machine. 7) Names and places in this brochure are fictitious.

DISCLAIMER

All clocks for Carrs meet the (CE) electromagnetic conformity tests. No illegal or endangered species of flora and fauna are used for the manufacture of any Carrs products. Carrs Silver reserves the right to alter the design or any of its products at any time without notice. Some illustrations are not to scale. All sizes are approximate. All products carry the Carrs Silver brand name unless otherwise requested. Engraving will only be carried out on Carrs factory supplied products.

PRESENTATION & CARE



In the modern world time is precious and there certainly isn't time to clean silver every day. The common belief that silver is high maintenance is founded upon the romantic notion of butlers endlessly polishing the master's silver. In fact, a wipe of a silver cloth approximately every 2 to 3 weeks is perfectly adequate to maintain your silver.

If tarnishing does begin to show, clean the item, using one of the cleaning products available from Carrs Silver. This should only be necessary twice a year depending on the conditions in which the silver is displayed or stored.

STERLING SILVER & SILVER PLATED

Sterling Silver and Silver Plated cutlery may become tarnished, this is simply removed with a good quality silver polish and a soft cloth. Always wash the cutlery after polishing. We do not recommend the use of a silver dip. Store in one of Carrs' canteen cases or cutlery rolls.

Silver is a soft metal and scratches more easily than stainless steel. Over a period of time the tiny scratches build up to produce an attractive patina, this is a natural occurrence, characteristic of silver.

GENERAL CARE

To help preserve the condition of your cutlery, we recommend you follow these simple guidelines when washing and storing your cutlery.

- For normal hygiene reasons, the cutlery should be washed before first use
- Do not leave the cutlery to soak, or store it in damp conditions
- Store in a cabinet or a cutlery roll available from Carrs Silver
- Rinse or wash cutlery immediately after use. Do not leave the cutlery with food on it for any length of time. Prolonged contact with certain foods such as salt, eggs, acid fruits and vinegars can cause marks and stains to occur.

HAND WASHING

Only use domestic washing up liquid and warm water, dry thoroughly with a soft cloth. Never use bleach or abrasive scouring materials.

DISHWASHERS

Always follow the dishwasher manufacturer's instructions.

Put knives with their blades facing down in a separate compartment to the spoons and forks.

Do not use the rinse and hold cycle. As soon as the cleaning cycle is complete, remove cutlery and dry with a soft cloth.



For view/download of full artwork catalogue, [click here](#)

CODE	STYLE
ITEM/TT3	CARRS SILVER CUTLERY ROLL - ACCEPTS 12 PIECES OF CUTLERY
ITEM/TT5	CARRS SILVER POLISHING MITT
ITEM/TT6	CARRS SILVER FOAM - SINGLE
ITEM/TT7	CARRS SILVER CLOTH - SINGLE
ITEM/TT9B	CARRS SILVER WHITE GLOVES - ONE PAIR - BOXED
ITEM/TT10	CARRS SILVER POLISH - SINGLE



Carrs of Sheffield (Manufacturing) Ltd
Troy House, Holbrook Avenue
Sheffield, S20 3FH
England

Telephone: +44 (0)114 251 0610

Email: info@carrs-silver.co.uk
www.carrs-silver.co.uk

.....
 follow @CarrsSilver  like CarrsSilver  Follow @CarrsSilver

